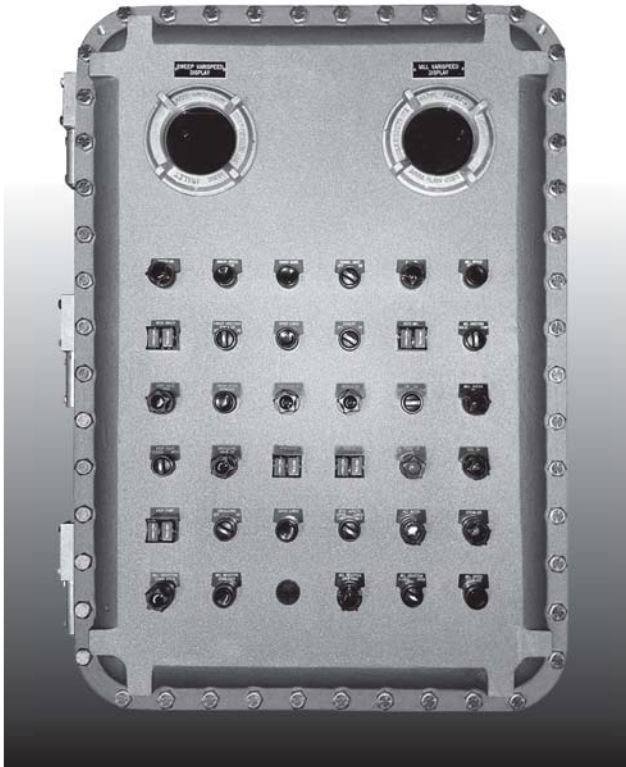


XCE: Explosionproof Control Enclosures

XCEX: Flameproof Control Enclosures

XCEQ: Explosionproof Quad-Lead Control Enclosures

XJF: Explosionproof Junction Boxes



STANDARD FEATURES

- 80 standard sizes available
- Corrosion resistant, copper free aluminum
- Pre-drilled hinge holes (hinge optional)
- Pre-drilled mounting panel bosses (mounting panel optional)
- Type 4 watertight Nitrile gasket
- High strength steel cover bolts (zinc plated and coated)
- Internal grounding screws. External earthing provided on XCEX
- Removable lifting eye bolts (18x24 and larger)
- Lid-lifter cover alignment device (1824 and larger)
- Cast-on mounting lugs / feet
- Tumblast, natural aluminum finish

DESIGN OPTIONS

- Stainless steel cover bolts for Type 4X orrosion protection
- Mounting panels - Available in galvanized steel (XSM), aluminum (XSA), or phenolic (XSB)
- Aluminum hinge kits with stainless steel hardware
- Conduit (NPT & metric) and device (NPSM) drilling & tapping
- Operators and auxiliary devices such as breather / drains and flame arrestors
- Quad lead, quick thread cover bolts (designate XCEQ when ordering, not available on XCEX)
- Window kits - Round (up to 8" viewing diameter or square / rectangular (up to 13" x 13"))
- Custom machining - Milling, counter-boring, spot-facing, blind drilled holes entries, chamfers

CONSTRUCTION MATERIAL


- Enclosure - Copper free aluminum (3/10 of 1%)
- Cover bolts - Steel, zinc plated and coated
- Hinge kits - Copper free aluminum with stainless steel hardware

CERTIFICATIONS

XCE Series:

Class I, Division 1, Gas Groups BCD	UL 1203
Class II, Division 1, Gas Groups EFG	CSA C22.2 No. 30
Class III	
Type 4, 7, 9	UL 50
Type 4X (w/ SS cover bolts)	

XCEX Series:

Class I, Division 1, Gas Groups BCD	UL 1203
Class II, Division 1, Gas Groups EFG	CSA C22.2 No. 30
Class III	
Type 4, 7, 9	UL 50
Type 4X (w/ SS cover bolts)	
Class I, Zone 1, AExd IIB	UL 60079-0 / UL 60079-1
Exd IIB	CSA 60079-0 / CSA 60079-1
0539  II 2 GD Ex d II B+H ₂ (Optional)	EN 60079-0 / EN 60079-1
IP66	IECEX UL 10.0046U

NOTE: Where reference is made to Class I and Class II hazardous locations, the equipment is suitable for both Division 1 and Division 2 locations.

CERTIFICATIONS

XJF SERIES

CERTIFICATIONS

Class I, Division 1 Groups B*,C,D
 Class II, Groups E,F,G
 TYPE 4 (w/N4 suffix)
 IP 66



LISTED 437S



*N4 suffix may affect Group B approval, consult factory.

XCE/XCEQ SERIES

CERTIFICATIONS

Class I, Division 1, Groups B*,C,D
 Class II, Groups E,F,G
 Class III
 TYPE 4, (w/N4 suffix)
 TYPE 4X (w/SS cover bolts)



*Specify Group B if required w/N4 suffix

XCEX SERIES

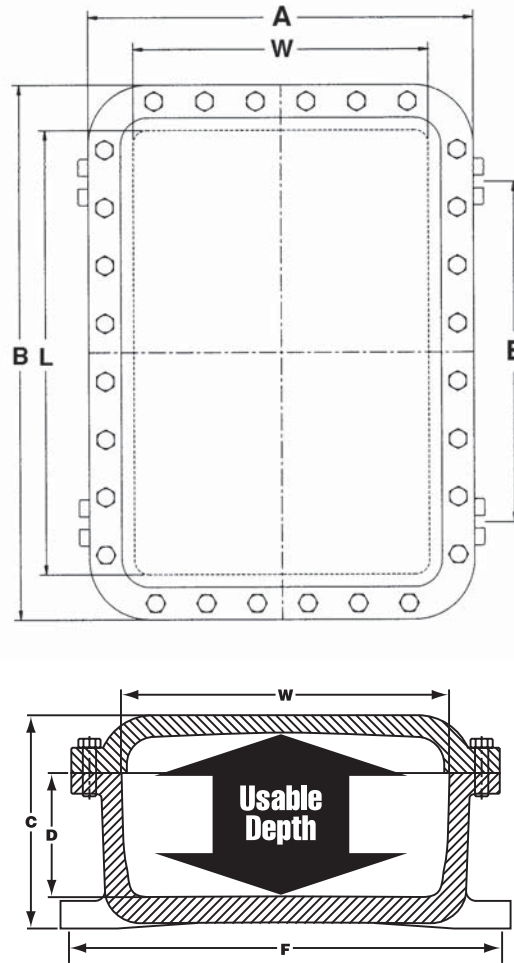
CERTIFICATIONS

Class I, Division 1, Groups B, C,D	TYPE 4, (w/N4 suffix)
Class II, Groups E,F,G	TYPE 4X (w/SS cover bolts)
Class III	IECEx UL 10.0046U
Class I, Zone 1, AEx d IIB	
Ex d IIB	
Epsilon 07 ATEX 2251U	
0539 Ⓢ II 2GD Ex d II B (Optional)*	
Ex d IIB+H ₂ (Optional)*	
Ex tD A21: IP 66	



*Specify ATEX if required

NOTE: Where reference is made to Class I and Class II hazardous locations, the equipment is suitable for both Division 1 and Division 2 locations.



DESIGN OPTIONS

MOUNTING PANS Three Materials Available:

Steel: (XSM) Galvanized 12 gauge steel plate. The catalog number includes the steel mounting pan complete with ¼" high spacers and stainless steel mounting screws.

Aluminum: (XSA) Consult factory for availability.

Phenolic: (XSB) A special phenolic laminated material that has high mechanical and dielectric strength. It is excellent for mounting and wiring control equipment. The catalog number includes the phenolic board, ⅜" thick, complete with ¼" high spacers and stainless steel mounting screws.

- NOTES**
1. No installation charge when customer specifies factory installation of mounting pan.
 2. Enclosures are pre-drilled for mounting panel unless otherwise specified.

HINGE SETS

Made of extruded aluminum alloy consisting of two sections, female and male (with stainless steel pin) and four stainless steel hex head bolts. Designed to allow right or left hand removable or non-removable installation. Unless specified, left hand removable hinge installation will be furnished by factory when hinged enclosures are ordered.

- NOTES**
1. Catalog numbers represent complete hinge sets necessary for enclosure assembly.
 2. Enclosures are pre-drilled for hinge kit unless otherwise specified.

XCE SERIES & XJF

XCE/XJF Catalog #	ENCLOSURE										PANS AND HINGES							
	Inside Nom. Dimensions			Usable Depth	Overall Dimensions			Mounting Lug CL to CL		Mtg. Bolt Size	Ship Weight	Pan Catalog #			Nom. Dimensions		Steel Pan Weight	Hinge Cat #
	W	L	D		A	B	C	E	F			Steel	Alum.	Phen	W	H		
041604	4	16	4	4 3/4	7 1/4	19 1/4	6	12 1/2	6 3/4	3/8	25	XSM0416	XSA0416	XSB0416	3 1/4	15 1/4	1 1/2	XHB-2
060804	6	8	4	4 3/8	9 1/4	11 1/4	5 1/8	4 1/2	9 3/8	3/8	21	XSM0608	XSA0608	XSB0608	5 1/8	7 3/8	1	XHB-2
060805	6	8	5	5 3/8	9 1/4	11 1/4	6 1/8	4 1/2	9 3/8	3/8	23	XSM0608	XSA0608	XSB0608	5 3/8	7 3/8	1	XHB-2
060806	6	8	6	6 3/8	9 1/4	11 1/4	7 1/8	4 1/2	9 3/8	3/8	25	XSM0608	XSA0608	XSB0608	5 3/8	7 3/8	1	XHB-2
061105	6	11	5	5 7/8	9 1/4	14 1/4	7 3/8	7 1/2	9 3/8	3/8	24	XSM0611	XSA0611	XSB0611	5 3/8	10 3/8	1 1/2	XHB-2
061204	6	12	4	4 3/4	9 1/4	15 1/4	6 1/8	8 1/2	9 3/8	3/8	24	XSM0612	XSA0612	XSB0612	5 3/8	11 3/8	1 3/4	XHB-2
061206	6	12	6	6 3/4	9 1/4	15 1/4	8 1/8	8 1/2	9 3/8	3/8	29	XSM0612	XSA0612	XSB0612	5 3/8	11 3/8	1 3/4	XHB-2
061305	6	13	5	5 7/8	9 1/4	16 1/4	7 3/8	9 1/2	9 3/8	3/8	26	XSM0613	XSA0613	XSB0613	5 3/8	12 3/8	2	XHB-2
071004	7	10	4	4 3/4	10 3/8	13 3/8	6 3/8	6 1/2	9 3/4	3/8	27	XSM0710	XSA0710	XSB0710	6 3/8	9 3/4	1 1/4	XHB-2
071006	7	10	6 1/8	6 3/4	10 3/8	13 3/8	8 3/8	6 1/2	9 3/4	3/8	31	XSM0710	XSA0710	XSB0710	6 3/8	9 3/4	1 1/4	XHB-2
071805	7	18 1/4	5	5 3/4	10 3/8	21 3/8	7 3/8	14 1/2	9 3/4	3/8	55	XSM0718	XSA0718	XSB0718	6 3/8	17 3/8	2 1/2	XHB-2
080804	8	8	4	4 13/16	11 3/8	11 3/8	6 3/8	4 1/4	11	3/8	24	XSM0808	XSA0808	XSB0808	7	7	1 1/4	XHB-2
080806	8	8	6	6 13/16	11 3/8	11 3/8	8 3/8	4 1/4	11	3/8	28	XSM0808	XSA0808	XSB0808	7	7	1 1/4	XHB-2
080808	8	8	8	8 13/16	11 3/8	11 3/8	10 3/8	4 1/4	11	3/8	35	XSM0808	XSA0808	XSB0808	7	7	1 1/4	XHB-2
081004	8	10	4	4 3/4	11 3/8	13 3/8	6 1/4	6 1/2	10 3/4	3/8	30	XSM0810	XSA0810	XSB0810	7	9 3/8	1 1/2	XHB-2
081006	8	10	6	6 3/4	11 3/8	13 3/8	8 1/4	6 1/2	10 3/4	3/8	34	XSM0810	XSA0810	XSB0810	7	9 3/8	1 1/2	XHB-2
081008	8	10	8	8 3/4	11 3/8	13 3/8	10 1/4	6 1/2	10 3/4	3/8	39	XSM0810	XSA0810	XSB0810	7	9 3/8	1 1/2	XHB-2
081204	8	12	4	4 3/4	11 3/8	15 3/8	6 1/4	8 1/2	10 3/4	3/8	34	XSM0812	XSA0812	XSB0812	6 7/8	10 7/8	2 1/4	XHB-2
081206	8	12	6	6 3/4	11 3/8	15 3/8	8 1/4	8 1/2	10 3/4	3/8	42	XSM0812	XSA0812	XSB0812	6 7/8	10 7/8	2 1/4	XHB-2
081208	8	12	8	8 3/4	11 3/8	15 3/8	10 1/4	8 1/2	10 3/4	3/8	48	XSM0812	XSA0812	XSB0812	6 7/8	10 7/8	2 1/4	XHB-2
091105	9	11	5	5 3/4	12 3/8	14 3/8	7 3/8	7 1/2	12	3/8	41	XSM0911	XSA0911	XSB0911	8	10	2 1/2	XHB-2
101004	10	10	4	4 3/4	13 3/8	13 3/8	6 3/8	6 1/2	13	3/8	34	XSM1010	XSA1010	XSB1010	8 7/8	8 7/8	2 1/2	XHB-2
101006	10	10	6	6 3/4	13 3/8	13 3/8	8 3/8	6 1/2	13	3/8	44	XSM1010	XSA1010	XSB1010	8 7/8	8 7/8	2 1/2	XHB-2
101008	10	10	8	8 3/4	13 3/8	13 3/8	10 3/8	6 1/2	13	3/8	50	XSM1010	XSA1010	XSB1010	8 7/8	8 7/8	2 1/2	XHB-2
101206	10	12	6 1/4	7 1/4	13 3/8	15 3/8	8 7/8	8 1/2	13	3/8	46	XSM1012	XSA1012	XSB1012	10 7/8	8 7/8	3	XHB-2
101404	10	14	4	4 3/4	13 3/8	17 3/8	6 7/8	10 5/8	13	3/8	42	XSM1014	XSA1014	XSB1014	8 7/8	12 7/8	3 1/2	XHB-2
101406	10	14	6	6 3/4	13 3/8	17 3/8	8 7/8	10 5/8	13	3/8	49	XSM1014	XSA1014	XSB1014	8 7/8	12 7/8	3 1/2	XHB-2
101408	10	14	8	8 3/4	13 3/8	17 3/8	10 1/2	10 5/8	13	3/8	57	XSM1014	XSA1014	XSB1014	8 7/8	12 7/8	3 1/2	XHB-2
101410	10	14	10	10 3/4	13 3/8	17 3/8	12 1/2	10 5/8	13	3/8	62	XSM1014	XSA1014	XSB1014	8 7/8	12 7/8	3 1/2	XHB-2
121204	12	12	4	5	16 1/4	16 1/4	6 13/16	8 3/8	16	1/2	60	XSM1212	XSA1212	XSB1212	10 7/8	10 7/8	3 3/4	XHC-2
121206	12	12	6	7	16 1/4	16 1/4	8 13/16	8 3/8	16	1/2	68	XSM1212	XSA1212	XSB1212	10 7/8	10 7/8	3 3/4	XHC-2
121208	12	12	8	9	16 1/4	16 1/4	10 13/16	8 3/8	16	1/2	80	XSM1212	XSA1212	XSB1212	10 7/8	10 7/8	3 3/4	XHC-2
121804	12	18	4	4 3/4	16 1/4	22 1/4	6 3/4	14 1/8	16	1/2	85	XSM1218	XSA1218	XSB1218	10 1/2	16 1/2	5 1/2	XHC-2
121806	12	18	6	6 3/4	16 1/4	22 1/4	8 3/4	14 1/8	16	1/2	93	XSM1218	XSA1218	XSB1218	10 1/2	16 1/2	5 1/2	XHC-2
121808	12	18	8	8 3/4	16 1/4	22 1/4	10 3/4	14 1/8	16	1/2	101	XSM1218	XSA1218	XSB1218	10 1/2	16 1/2	5 1/2	XHC-2
122005	12	20	5	5 3/4	16 1/4	24 1/4	8 3/8	14 3/8	16	1/2	104	XSM1220	XSA1220	XSB1220	11	19	6 1/2	XHC-2
122404	12	24	4	4 3/8	16 1/4	24 1/4	7 1/4	18 3/8	16	1/2	115	XSM1224	XSA1224	XSB1224	11	23	8	XHC-2
122406	12	24	6	6 13/16	16 1/4	28 1/4	9 1/4	18 3/8	16	1/2	127	XSM1224	XSA1224	XSB1224	11	23	8	XHC-2
122408	12	24	8	8 13/16	16 1/4	28 1/4	11 1/4	18 3/8	16	1/2	142	XSM1224	XSA1224	XSB1224	11	23	8	XHC-2
122410	12	24	10	10 13/16	16 1/4	28 1/4	13 1/4	18 3/8	16	1/2	154	XSM1224	XSA1224	XSB1224	11	23	8	XHC-2

- NOTES**
- To indicate Quad-Lead bolt option, add suffix "Q" after XCE. (Not available on XCEX models.)
 - Operators, windows and hinges are ordered separately.
 - XCEX Ex d approval optional.
 - To indicate Type 4 / IP66 option, add suffix "N4" after size (catalog number).
 - Where reference is made to Class I and Class II hazardous locations, the equipment is suitable for both Division 1 and Division 2 locations.
 - Enclosures are pre-drilled for mounting panel and hinge kit unless otherwise specified.

EXPLOSIONPROOF
XCE/XJF Enclosures

EXPLOSIONPROOF ENCLOSURES
XCE SERIES & XJF

XCE/XJF Catalog #	ENCLOSURE											PANS AND HINGES						
	Inside Nom. Dimensions			Usable Depth	Overall Dimensions			Mounting Lug CL to CL		Mtg. Bolt Size	Ship Weight	Pan Catalog #			Nom. Dimensions		Steel Pan Weight	Hinge Cat #
	W	L	D		A	B	C	E	F			Steel	Alum.	Phen	W	H		
123006	12	30	6	6 1/16	16 3/4	34 1/4	9 5/8	23	16	1/2	180	XSM1230	XSA1230	XSB1230	10 3/4	28 3/4	9 3/4	XHC-2
123604	12	36	4	4 1/16	16 1/4	40 1/4	7 1/16	29	16	1/2	200	XSM1236	XSA1236	XSB1236	10 3/4	34 3/4	11 3/4	XHC-3
123606	12	36	6	6 1/16	16 1/4	40 1/4	9 1/16	29	16	1/2	212	XSM1236	XSA1236	XSB1236	10 3/4	34 3/4	11 3/4	XHD-3
123608	12	36	8	8 1/16	16 1/4	40 1/4	11 1/16	29	16	1/2	232	XSM1236	XSA1236	XSB1236	10 3/4	34 3/4	11 3/4	XHD-3
124608	12	46	8	8 1/16	16 1/4	50 1/4	11 1/16	39	16	5/8	280	XSM1246	XSA1246	XSB1246	10 3/4	44 3/4	15	XHD-4
141404	14	14	4	5	18 1/4	18 1/4	7 1/8	9 3/4	17 3/4	1/2	91	XSM1414	XSA1414	XSB1414	12 7/8	12 7/8	5	XHC-2
141406	14	14	6	7	18 1/4	18 1/4	9 1/4	9 3/4	17 3/4	1/2	97	XSM1414	XSA1414	XSB1414	12 7/8	12 7/8	5	XHC-2
141408	14	14	8	9	18 1/4	18 1/4	11 1/8	9 3/4	17 3/4	1/2	103	XSM1414	XSA1414	XSB1414	12 7/8	12 7/8	5	XHC-2
142210	14	22	10	11 1/4	18 1/4	26 1/4	13 3/8	16 1/2	17 3/4	1/2	181	XSM1422	XSA1422	XSB1422	12 7/8	20 7/8	8	XHD-2
142213	14	22	10	13	18 1/4	26 1/4	15 1/8	16 1/2	17 3/4	1/2	235	XSM1422	XSA1422	XSB1422	12 7/8	20 7/8	8	XHD-2
142806	14	28	6	7 13/16	18 1/4	32 1/4	9 9/16	22 1/2	17 3/4	1/2	120	XSM1428	XSA1428	XSB1428	12 7/8	26 7/8	10 3/4	XHF-2
161604	16	16	4	5 3/8	20 7/8	20 7/8	7 15/16	11	19 3/4	5/8	123	XSM1616	XSA1616	XSB1616	14 3/4	14 3/4	6 3/4	XHD-2
161606	16	16	6	7 3/8	20 7/8	20 7/8	9 15/16	11	19 3/4	5/8	135	XSM1616	XSA1616	XSB1616	14 3/4	14 3/4	6 3/4	XHD-2
161608	16	16	8	9 3/8	20 7/8	20 7/8	11 15/16	11	19 3/4	5/8	156	XSM1616	XSA1616	XSB1616	14 3/4	14 3/4	6 3/4	XHD-2
162406	16	24	6	7 13/16	20 7/8	28 7/8	10 3/8	18 3/8	19 3/4	5/8	190	XSM1624	XSA1624	XSB1624	14 1/2	22 1/2	10 1/4	XHF-2
162408	16	24	8	9 13/16	20 7/8	28 7/8	12 3/8	18 3/8	19 3/4	5/8	209	XSM1624	XSA1624	XSB1624	14 1/2	22 1/2	10 1/4	XHF-2
162410	16	24	10	11 13/16	20 7/8	28 7/8	14 3/8	18 3/8	19 3/4	5/8	225	XSM1624	XSA1624	XSB1624	14 1/2	22 1/2	10 1/4	XHF-2
162806	16	28	6	6 13/16	20 1/2	32 15/16	9 1/2	22 1/2	19 3/4	5/8	220	XSM1628	XSA1628	XSB1628	26 1/2	14 1/2	12	XHF-2
163010	16	30	10	11 1/8	20 1/2	34 1/2	13 3/8	23	19 3/4	5/8	300	XSM1616	XSA1616	XSB1616	14 3/4	14 3/4	6 3/4	XHD-2
63406	16	34	6	6 15/16	20 1/2	38 1/2	9 1/2	27	19 3/4	5/8	277	XSM1630	XSA1630	XSB1630	14 1/2	28 1/2	12 1/2	XHF-2
164610	16	46	10	11 13/16	20 7/8	50 7/8	14 9/16	39	19 3/4	5/8	390	XSM1646	XSA1646	XSB1646	14 1/2	44 1/2	20 1/4	XHF-4
181804	18	18	4	5 13/16	22 7/8	22 7/8	8 1/2	13	21 3/4	5/8	154	XSM1818	XSA1818	XSB1818	16 3/4	16 3/4	8 3/4	XHF-2
181806	18	18	6	7 13/16	22 7/8	22 7/8	10 1/2	13	21 3/4	5/8	177	XSM1818	XSA1818	XSB1818	16 3/4	16 3/4	8 3/4	XHF-2
181808	18	18	8	9 13/16	22 7/8	22 7/8	12 1/2	13	21 3/4	5/8	200	XSM1818	XSA1818	XSB1818	16 3/4	16 3/4	8 3/4	XHF-2
182406	18	24	6	7 7/16	22 7/8	28 7/8	10 13/16	18 3/8	21 3/4	5/8	226	XSM1824	XSA1824	XSB1824	16 1/2	22 1/2	11 1/2	XHF-2
182408	18	24	8	9 7/16	22 7/8	28 7/8	12 13/16	18 3/8	21 3/4	5/8	239	XSM1824	XSA1824	XSB1824	16 1/2	22 1/2	11 1/2	XHF-2
182410	18	24	10	11 7/16	22 7/8	28 7/8	14 13/16	18 3/8	21 3/4	5/8	260	XSM1824	XSA1824	XSB1824	16 1/2	22 1/2	11 1/2	XHF-2
183008	18	30	8	9 3/8	22 7/8	34 7/8	12 13/16	23	21 3/4	5/8	293	XSM1830	XSA1830	XSB1830	16 1/2	28 1/2	14 3/4	XHF-2
183608	18	36	8	9 3/8	22 7/8	40 7/8	12 7/8	29	21 3/4	5/8	318	XSM1836	XSA1836	XSB1836	16 1/2	34 1/2	18	XHF-3
183610	18	36	10	11 3/8	22 7/8	40 7/8	14 7/8	29	21 3/4	5/8	340	XSM1836	XSA1836	XSB1836	16 1/2	34 1/2	18	XHF-3
203606*	20	36	6	7 3/8	24 7/8	40 7/8	10 7/8	29	24	5/8	385	XSM1616	XSA1616	XSB1616	14 3/4	14 3/4	6 3/4	XHD-2
203612*	20	36	12	12	25 3/8	41 3/8	15	29	24	5/8	405	XSM2048	XSA2048	XSB2048	46 1/2	18 1/2	27	XHF-4
204806***	20	48	6	7 7/8	24 7/8	52 7/8	10 7/8	41	24	5/8	430	XSM2424	XSA2424	XSB2424	22	22	15 1/4	XHF-2
204812*	20	48	12	14 1/4	25 3/8	53 3/8	15	41	24	5/8	555	XSM2424	XSA2424	XSB2424	22	22	15 1/4	XHF-2
242408	24	24	8	9 7/16	28 7/8	28 7/8	12 7/16	18 3/8	28	5/8	302	XSM2424	XSA2424	XSB2424	22	22	15 1/4	XHF-2
242410	24	24	10	11 7/16	28 7/8	28 7/8	14 7/16	18 3/8	28	5/8	330	XSM2424	XSA2424	XSB2424	22	22	15 1/4	XHF-2
243008	24	30	8	9 1/4	28 7/8	34 7/8	12 15/16	23	28	5/8	356	XSM2430	XSA2430	XSB2430	22	28	19 1/4	XHF-2
243608	24	36	8	9 1/4	28 7/8	40 7/8	12 7/16	29	28	5/8	408	XSM2436	XSA2436	XSB2436	22	34	23 1/2	XHF-3
243610***	24	36	10	11 1/4	28 7/8	40 7/8	14 7/8	29	28	5/8	433	XSM2436	XSA2436	XSB2436	22	34	23 1/2	XHF-3
323612*	32	36	12	12	37 3/4	41 3/4	15 1/2	29	36 1/8	5/8	691	XSM3236	XSA3236	XSB3236	29	33	28 3/4	XHF-3

NOTES

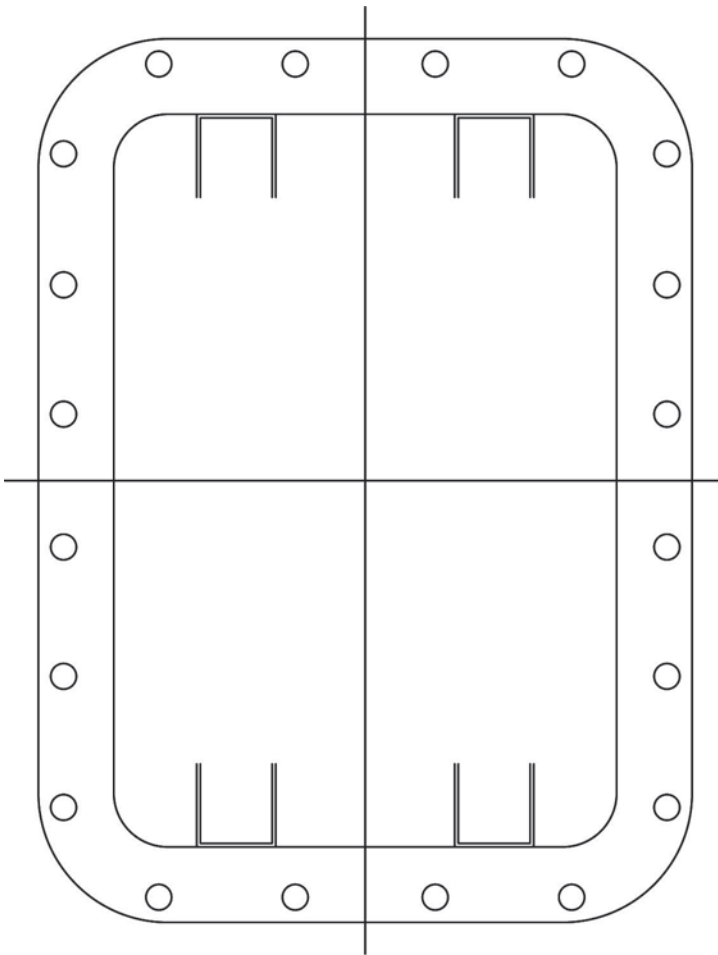
- To indicate Quad-Lead bolt option, add suffix "Q" after XCE. (Not available on XCEX models.)
- Operators, windows and hinges are ordered separately.
- Ex d approval optional on XCEX Series only.
- To indicate Type 4 / IP66 option, add suffix "N4" after size (catalog number).
- Where reference is made to Class I and Class II hazardous locations, the equipment is suitable for both Division 1 and Division 2 locations.
- Enclosures are pre-drilled for mounting panel and hinge kit unless otherwise specified.

#Lid Lifter Cover Assist standard on all XCE enclosures 18 x 24 and higher
 **ATEX approval but no Domestic UL & cUL approvals
 ***This unit has limited approval dependent on number of entries
 Some XJF Series enclosures do not have UL approval - consult factory.

EXPLOSIONPROOF
 XCE/XJF Enclosures

Customer Design Sheets

Cover Layout



DIMENSION ALL MODIFICATIONS
FROM CENTER LINES OF COVER

ATEX /IEC
DEMKO U Cert.
REF. DS483

UL
UL APPROVED
REF. DS361 & B301

CSA
CSA APPROVED
REF. DS327 & B301

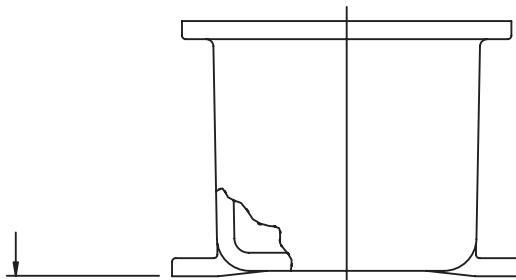
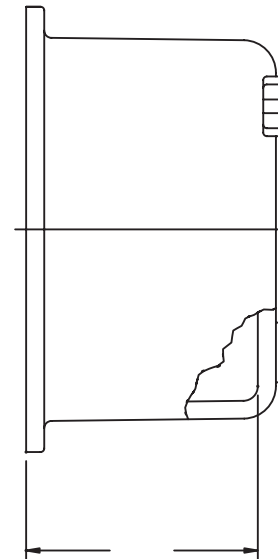
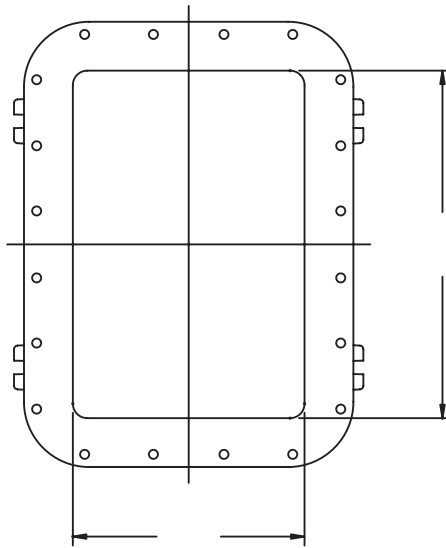
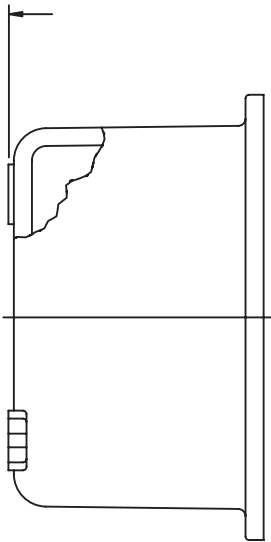
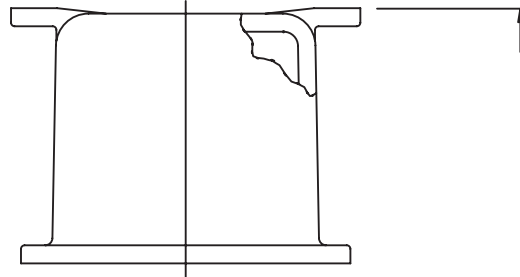
HINGES
 LEFT HAND
 RIGHT HAND
 LONG SIDE
 SHORT SIDE
 NON REMOVABLE

NEMA 4/ IP66
N4 GROOVE

CAT #: X _____

Customer Design Sheets

Box Layout



ATEX (CENELEC)/IEC

- DEMKO U Cert.
REF.DS483

UL

- UL APPROVED
REF.DS248 & B301

CSA

- CSA APPROVED
REF. B301

MTG. PANS

- XSA PAN
- XSB PAN
- XSM PAN

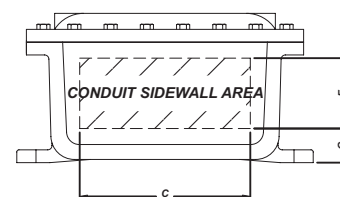
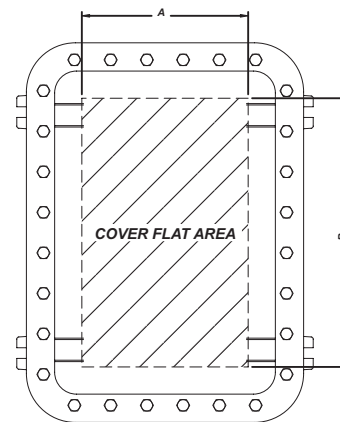
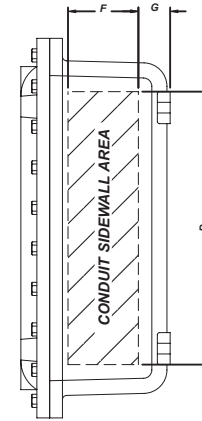
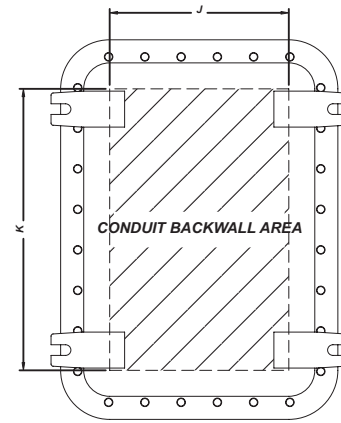
HINGES

- LEFT HAND
- RIGHT HAND
- LONG SIDE
- SHORT SIDE
- NON REMOVABLE

DIMENSION ALL MODIFICATIONS FROM CENTER LINES AND BOTTOM OF MOUNTING LUGS WHENEVER POSSIBLE.

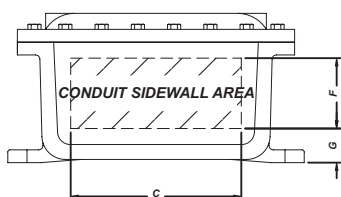
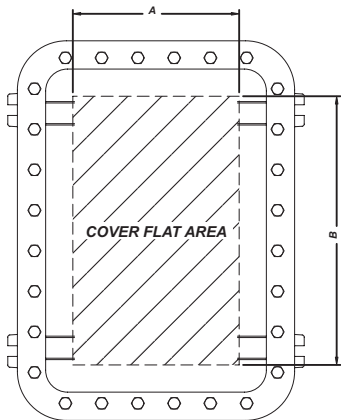
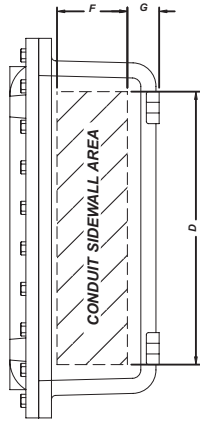
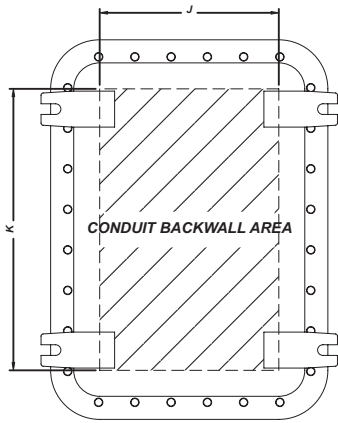
Cover & Sidewall Area

Enclosure Series	COVER FLAT		CONDUIT - SIDEWALL				BACKWALL	
	A	B	C	D	F	G	J	K
041604	2 1/8	14 1/8	2 11/16	14 11/16	2 7/8	1	3 1/8	15 1/8
060804	3 7/8	5 7/8	4 11/16	6 11/16	2 7/8	1	5 1/8	7 1/8
060805	3 7/8	5 7/8	4 5/8	6 5/8	3 7/8	1	5 1/16	7 1/16
060806	3 7/8	5 7/8	4 9/16	6 9/16	4 7/8	1	4 15/16	6 15/16
061105	3 7/8	8 7/8	4 5/8	9 5/8	3 3/8	1	5 1/8	10 1/8
061204	3 7/8	9 7/8	4 11/16	10 11/16	2 7/8	1	5 1/8	11 1/8
061206	3 7/8	9 7/8	4 9/16	10 9/16	4 9/16	1 5/16	4 7/16	10 7/16
061305	3 7/8	10 7/8	4 5/8	11 5/8	3 5/8	1	5 1/8	12 1/8
071004	4 7/8	7 7/8	5 5/8	8 5/8	2 1/2	1 3/8	5 5/8	8 5/8
071006	4 7/8	7 7/8	5 9/16	8 9/16	4 5/8	1 3/8	5 9/16	8 9/16
071805	5	16 1/4	5 7/16	16 11/16	3 1/2	1 3/8	5 7/16	16 11/16
080804	5 7/8	5 7/8	6 5/8	6 5/8	2 11/16	1 1/8	7 1/8	7 1/8
080806	5 7/8	5 7/8	6 9/16	6 9/16	4 11/16	1 1/8	7 1/16	7 1/16
080808	5 7/8	5 7/8	6 7/16	6 7/16	6 11/16	1 1/8	6 15/16	6 15/16
081004	5 7/8	7 7/8	6 5/8	8 5/8	2 1/2	1 3/8	6 5/8	8 5/8
081006	5 7/8	7 7/8	6 9/16	8 9/16	4 1/2	1 3/8	6 9/16	8 9/16
081008	5 7/8	7 7/8	6 7/16	8 7/16	6 1/2	1 3/8	6 7/16	8 7/16
081204	5 7/8	9 7/8	6 5/8	10 5/8	2 1/2	1 3/8	6 5/8	10 5/8
081206	5 7/8	9 7/8	6 9/16	10 9/16	4 1/2	1 3/8	6 9/16	10 9/16
081208	5 7/8	9 7/8	6 7/16	10 7/16	6 1/2	1 3/8	6 7/16	10 7/16
091105	6 7/8	8 7/8	7 5/16	9 5/16	3 3/8	1 9/16	7 5/16	9 5/16
101004	7 7/8	7 7/8	8 3/8	8 3/8	2 3/8	1 9/16	8 3/8	8 3/8
101006	7 7/8	7 7/8	8 5/16	8 5/16	4 3/8	1 9/16	8 5/16	8 5/16
101008	7 7/8	7 7/8	8 3/16	8 3/16	6 3/8	1 9/16	8 3/16	8 3/16
101206	7 3/4	9 3/4	8 1/4	10 1/4	4 5/8	1 9/16	8 1/4	10 1/4
101404	7 7/8	11 7/8	8 3/8	12 3/8	2 3/8	1 9/16	8 3/8	12 3/8
101406	7 7/8	11 7/8	8 5/16	12 5/16	4 3/8	1 9/16	8 5/16	12 5/16
101406	7 7/8	11 7/8	8 1/4	12 1/4	6 1/4	1 3/4	7 5/8	11 5/8
101408	7 7/8	11 7/8	8 1/16	12 1/16	6 1/4	1 3/4	7 5/8	11 5/8
121204	9 3/4	9 3/4	10	10	2 1/8	1 7/8	10	10
121206	9 3/4	9 3/4	9 13/16	9 13/16	4 1/8	1 7/8	9 13/16	9 13/16
121208	9 3/4	9 3/4	9 11/16	9 11/16	6 1/8	1 7/8	9 11/16	9 11/16
121804	9 3/4	15 3/4	10 1/8	16 1/8	2 1/8	1 7/8	10 1/8	16 1/8
121806	9 3/4	15 3/4	9 13/16	15 13/16	4 1/8	1 7/8	9 13/16	15 13/16
121808	9 3/4	15 3/4	9 11/16	15 11/16	6 1/8	1 7/8	9 11/16	15 11/16
122005	9 3/4	17 3/4	10 1/16	18 1/16	3 3/16	2	10 1/16	18 1/16
122404	9 5/8	21 5/8	10 1/8	22 1/8	2 1/8	2	10 1/8	22 1/8



EXPLOSIONPROOF
XCE/XJF Enclosures

Cover & Sidewall Area



Enclosure Series	COVER FLAT		CONDUIT - SIDEWALL				BACKWALL	
	A	B	C	D	F	G	J	K
122408	9 5/8	21 5/8	9 15/16	21 15/16	6 1/8	2	9 15/16	21 15/16
122410	9 5/8	21 5/8	9 13/16	21 13/16	8 1/8	2	9 13/16	21 13/16
123006	9 5/8	27 7/8	10 1/16	28 1/16	4	2 5/8	10 1/16	28 1/16
123604	9 5/8	33 7/8	10 1/8	34 1/8	2	2 3/8	10 1/8	34 1/8
123606	9 5/8	33 7/8	10 1/16	34 1/16	4	2 3/8	10 1/16	34 1/16
123608	9 5/8	33 7/8	9 15/16	33 15/16	6	2 3/8	9 15/16	33 15/16
124608	9 5/8	42 1/4	9 7/16	43 7/16	5 5/8	2 11/16	9 3/16	43 3/16
141404	11	11	12 1/8	12 1/18	1 3/4	2 1/8	11 5/8	11 5/8
141406	11	11	12 1/16	12 1/16	3 3/4	2 1/8	11 9/16	11 9/16
141408	11	11	11 15/16	11 15/16	5 3/4	2 1/8	11 7/16	11 7/16
142806	11	25	11 5/8	25 5/8	4	2	11 5/8	25 5/8
161604	12 1/2	12 1/2	14 1/8	14 1/8	2	2 1/16	14 1/8	14 1/8
161606	12 1/2	12 1/2	14 1/16	14 1/16	4	2 1/16	14 1/16	14 1/16
161608	12 1/2	12 1/2	13 15/16	13 15/16	6	2 1/16	13 15/16	13 15/16
162406	12 1/2	20 1/2	13 1/2	21 1/2	3 7/8	2 5/16	13 1/2	21 1/2
162408	12 1/2	20 1/2	13 3/8	21 3/8	5 7/8	2 5/16	13 3/8	21 3/8
162410	12 1/2	20 1/2	13 1/4	21 1/4	7 7/8	2 5/16	13 1/4	21 1/4
162806	13 1/4	25 1/4	14 1/16	26 1/16	3 11/16	2 3/16	14 1/16	26 1/16
163010	13 7/8	27 7/8	14 1/2	28 1/2	8 1/4	2 1/8	13 1/2	27 1/2
163406	13 3/8	31 3/8	14 1/16	32 1/16	3 15/16	2 5/16	14 1/16	32 1/16
164610	12 1/2	42 1/4	13 7/8	43 7/8	7 7/8	2 7/16	13 7/8	43 7/8
181804	14 1/4	14 1/4	16 3/16	16 3/16	1 7/8	2 5/16	16 3/16	16 3/16
181806	14 1/4	14 1/4	16 1/16	16 1/16	3 7/8	2 5/16	16 1/16	16 1/16
181808	14 1/4	14 1/4	15 15/16	15 15/16	5 7/8	2 5/16	15 15/16	15 15/16
182406	14 1/4	20 1/4	15 7/16	21 7/16	3 7/8	2 1/2	15 7/16	21 7/16
182408	14 1/4	20 1/4	15 3/8	21 3/8	5 7/8	2 1/2	15 3/8	21 3/8
182410	14 1/4	20 1/4	15 1/4	21 1/4	7 7/8	2 1/2	15 1/4	21 1/4
183008	14 1/4	26 1/4	15 3/8	27 3/8	5 7/8	2 1/2	15 3/8	27 3/8
183608	14 1/4	32 1/4	15 3/8	33 3/8	5 7/8	2 1/2	15 3/8	33 3/8
183610	14 1/4	32 1/4	15 1/4	33 1/4	7 7/8	2 1/2	15 1/4	33 1/4
203606	16 3/8	32 3/8	17 9/16	33 9/16	3 7/8	2 7/16	17 1/2	33 3/8
203612	16 3/8	32 3/8	17 9/16	33 9/16	3 7/8	2 7/16	17 1/2	33 3/8
204806	16 3/8	44 3/8	17 3/8	45 3/8	3 7/8	2 7/16	17 1/2	45 3/8
204812	16 3/8	44 3/8	17 3/8	45 3/8	3 7/8	2 7/16	17 1/2	45 3/8
242408	20 1/4	20 1/4	20 7/8	20 7/8	5 5/8	2 9/16	20 7/8	20 7/8
242410	20 1/4	20 1/4	20 3/4	20 3/4	7 5/8	2 9/16	20 3/4	20 3/4
243008	20 1/4	26 1/4	20 5/8	26 5/8	5 7/8	2 7/16	21 3/8	27 3/8
243608	20 1/4	32 1/4	21 3/16	33 3/16	5 7/8	2 1/2	21 15/16	33 15/16
243610	20 1/4	32 1/4	21 1/8	33 1/8	7 7/8	2 3/4	20 7/8	32 7/8
323612	28 3/4	32 3/4	30	34	3 3/8	2 3/4	28 7/8	32 7/8

Minimum Spacing for Operators in Covers

Catalog #	STANDARD OPERATORS				MINIATURE OPERATORS				COVER WALL
	Max #	Max Rows	Max Per Row	Spacing CL to CL	Max #	Max Rows	Max Per Row	Spacing CL to CL	Thickness
XCE041604	5	5	1	2 ½	13	13	1	1	½
XCE060804	2	2	1	2 ½	8	4	2	1	½
XCE060805	2	2	1	2 ½	8	4	2	1	½
XCE060806	2	2	1	2 ½	8	4	2	1	½
XCE061105	3	3	1	2 ½	14	7	2	1	½
XCE061204	4	4	1	2 ½	16	8	2	1	⅝
XCE061206	4	4	1	2 ½	16	8	2	1	⅝
XCE061305	4	4	1	2 ½	18	9	2	1	½
XCE071004	6	3	2	2 ½	18	6	3	1	⅝
XCE071006	6	3	2	2 ½	18	6	3	1	⅝
XCE071805	12	6	2	2 ½	45	15	3	1	⅝
XCE080804	4	2	2	2 ½	16	4	4	1	1 ¼
XCE080806	4	2	2	2 ½	16	4	4	1	1 ¼
XCE080808	4	2	2	2 ½	16	4	4	1	1 ¼
XCE081004	6	3	2	2 ½	24	6	4	1	1 ¼
XCE081006	6	3	2	2 ½	24	6	4	1	1 ¼
XCE081008	6	3	2	2 ½	24	6	4	1	1 ¼
XCE081204	8	4	2	2 ½	32	8	4	1	1 ¼
XCE081206	8	4	2	2 ½	32	8	4	1	1 ¼
XCE081208	8	4	2	2 ½	32	8	4	1	1 ¼
XCE091105	6	3	2	2 ½	35	7	5	1	1 ¼
XCE101004	9	3	3	2 ½	36	6	6	1	1 ¼
XCE101006	9	3	3	2 ½	36	6	6	1	1 ¼
XCE101008	9	3	3	2 ½	36	6	6	1	1 ¼
XCE101206	12	4	3	2 ½	48	8	6	1	¾
XCE101406	12	4	3	2 ½	50	10	6	1	¾
XCE101408	12	4	3	2 ½	50	10	6	1	¾
XCE101410	12	4	3	2 ½	50	10	6	1	¾
XCE121204	9	3	3	3	50	8	8	1	⅞
XCE121206	9	3	3	3	50	8	8	1	⅞
XCE121208	9	3	3	3	50	8	8	1	⅞
XCE121804	15	5	3	3	50	14	8	1	1 ⅝
XCE121806	15	5	3	3	50	14	8	1	1 ⅝
XCE121808	15	5	3	3	50	14	8	1	1 ⅝
XCE122005	18	6	3	3	50	16	8	1	1 ⅝
XCE122404	21	7	3	3	50	20	8	1	1 ⅝
XCE122406	21	7	3	3	50	20	8	1	1 ⅝

NOTE For closer spacing consult factory for details. Hydro test may be necessary for closer hole spacing.

Minimum Spacing for Operators in Covers

Catalog #	STANDARD OPERATORS				MINIATURE OPERATORS				COVER
	Max #	Max Rows	Max Per Row	Spacing CL to CL	Max #	Max Rows	Max Per Row	Spacing CL to CL	Thickness
XCE122408	21	7	3	3	50	20	8	1	1 ½
XCE122410	21	7	3	3	50	20	8	1	1 ½
XCE123006	27	9	3	3	50	26	8	1	1 ¾
XCE123604	33	11	3	3	50	32	8	1	1 ¾
XCE123606	33	11	3	3	50	32	8	1	1 ¾
XCE123608	33	11	3	3	50	32	8	1	1 ¾
XCE124608	42	14	3	3	50	41	8	1	1 ¼
XCE141404	16	4	4	3	50	10	10	1	¾
XCE141406	16	4	4	3	50	10	10	1	¾
XCE141408	16	4	4	3	50	10	10	1	¾
XCE142210	24	6	4	3	50	18	10	1	1 ½
XCE142213	24	6	4	3	50	18	10	1	1 ½
XCE142806	32	8	4	3	50	24	10	1	1 ½
XCE161604	16	4	4	3 ½	50	11	11	1	¾
XCE161606	16	4	4	3 ½	50	11	11	1	¾
XCE161608	16	4	4	3 ½	50	11	1	1	¾
XCE162406	24	6	4	3 ½	50	19	11	1	¾
XCE162408	24	6	4	3 ½	50	19	11	1	¾
XCE162410	24	6	4	3 ½	50	19	11	1	¾
XCE162806	28	7	4	3 ½	50	24	11	1	1 ¼
XCE163010	32	8	4	3 ½	50	24	11	1	1 ¼
XCE163406	36	9	4	3 ½	50	30	11	1	1 ¼
XCE164610	48	12	4	3 ½	50	41	11	1	1
XCE181804	36	6	6	2 ½	50	13	13	1	1
XCE181806	36	6	6	2 ½	50	13	13	1	1
XCE181808	36	6	6	2 ½	50	13	13	1	1
XCE182406	24	6	4	3 ½	50	19	13	1	1 ½
XCE182408	24	6	4	3 ½	50	19	13	1	1 ½
XCE182410	24	6	4	3 ½	50	19	13	1	1 ½
XCE183008	32	8	4	3 ½	50	25	13	1	1 ½
XCE183608	36	9	4	3 ½	50	31	13	1	1 ¾
XCE183610	36	9	4	3 ½	50	31	13	1	1 ¾
XCE203606*	45	9	5	3 ½	50	31	15	1	1 ¾
XCE203612*	45	9	5	3 ½	50	31	15	1	1 ¾
XCE204806*	65	13	5	3 ½	50	43	15	1	1
XCE204812*	65	13	5	3 ½	50	43	15	1	1
XCE242408	36	6	6	3 ½	50	19	19	1	1 ½
XCE242410	36	6	6	3 ½	50	19	19	1	1 ½
XCE243008	42	7	6	3 ½	50	25	19	1	1 ¾
XCE243608	54	9	6	3 ½	50	31	19	1	1 ¾
XCE243610	54	9	6	3 ½	50	31	19	1	1 ¾
XCE323612**	72	9	8	3 ½	50	31	27	1	1 ¾

NOTE For closer spacing consult factory for details. Hydro test may be necessary for closer hole spacing.

* ATEX approval but no Domestic UL & cUL approvals

** Consult factory

Conduit Drilling and Tapping Guidelines

When drilling & tapping enclosures for conduit, proper installation requires compliance with the following:

1. Must be tapped with at least 5 full NPT threads in enclosure back or sides only; min. ½" conduit size for XJF and XCE series.
2. Depth of NPT holes must be plus ½ turn min. to plus 2 turns max. past standard NPT plug gage notch.
3. Inner end of conduit openings shall be smooth and well-rounded.

TABLE I

THREAD SIZE OF CONDUIT	MINIMUM WALL THICKNESS AT CONDUIT ENTRANCE EXCLUDING XCEX
Inches (NPT)	Explosionproof
½ - ¾	⅜ inch
1 - 2	7/16 inch
2 ½ - 5	⅝ inch

TABLE II

Conduit size, inches (NPT) / metric	½ / m16	¾ / m16	1 / m25	1¼ / m32	1½ / m40	2 / m56	2 ½ / m 63	3 / m75	3 ½	4	5
Minimum Distance from conduit CL to inside corner or back of box	1 ⅝	1 7/16	1 1/16	1 ¾	1 7/8	2 ½	2 ¾	2 11/16	2 15/16	3 ¼	3 7/8
Approximate diameter of union	1 7/8	1 7/8	2 1/16	2 7/8	3 ¼	3 7/8	4 7/8	5 ½	6	6 ½	7 ½

TABLE III

SIZE	5	4	3 ½	3	2 ½	2	1 ½	1 ¼	1	¾	½
½ / m16	4 ½	3 ⅝	3 ⅝	3	2 ⅝	2 ⅝	2	1 7/8	1 ¾	1 ⅝	1 ½
¾ / m20	4 ¾	3 ¾	3 ½	3 ⅝	2 ¾	2 ½	2 ½	2	1 7/8	1 ¾	
1 / m25	4 7/8	4	3 ⅝	3 ¼	3	2 ⅝	2 ⅝	2 ¼	2		
1 ¼ / m32	5 ⅝	4 ⅝	3 7/8	3 ½	3 ⅝	2 7/8	2 ½	2 ⅝			
1 ½ / m40	5 ½	4 ¼	4	3 ⅝	3 ¼	3	2 ⅝				
2 / m50	5 ¾	4 ⅝	4 ¼	3 7/8	3 ⅝	3 ¼					
2 ½ / m63	6	4 7/8	4 ⅝	4 ¼	3 7/8						
3 / m75	6 ¼	5 ⅝	5	4 ⅝							
3 ½	6 ½	5 ⅝	5 ¼								
4	6 ¾	5 7/8									
5	7 ¼										

- NOTES**
1. This information is compiled from data which we believe is reliable and is given in good faith. Since the methods of application and conditions under which our products are used are beyond our control, we are not able to guarantee the application and/or use of same. The user assumes all risks and liability in connection with the application and use of our products.
 2. Dimensions are in inches.
 3. Metric threads available from factory for most applications – Consult Factory.
 4. Consult Factory for special spacing arrangements. Hydro test may be required.

Auxiliary Device Drilling & Tapping Guidelines

Spacing For Auxiliary Devices Installed in Box Walls Of Control Panel Enclosures Used In Hazardous Locations.

When using an Auxiliary Device in the box wall of an enclosure used in hazardous locations, proper installation requires compliance with the following:

1. A minimum of (5) thread engagement, class 2 fit, required for group C & D applications.
 A minimum of (7) thread engagement, class 2 fit, required for group B applications.
2. Table I shows minimum box wall thickness for Auxiliary Device threads.

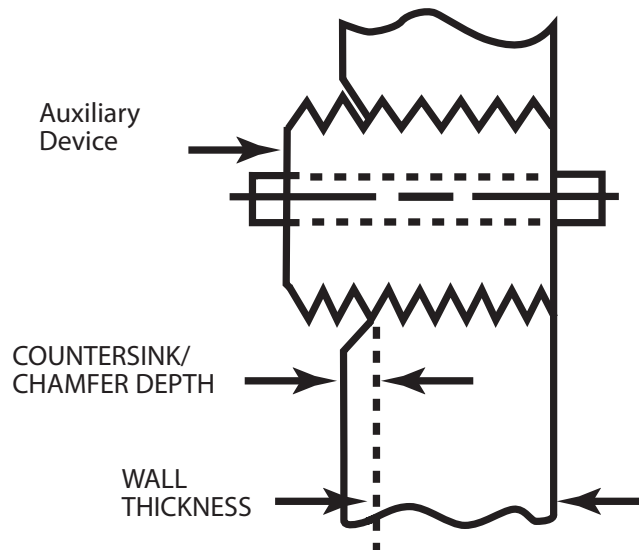
TABLE I

REQUIRED MINIMUM BOX WALL THICKNESS				
Thread Size (In.)	Group C & D min. (5) thread engagement	Group B min. (7) thread engagement	Typical Auxiliary Devices	Drill Dia.
½ -14 NPSM	¾ Inch	½ Inch		.747/.759
¾ -14 NPSM	¾ Inch	½ Inch	XBO, XHPB, XHSS, Standard Operators	.958/.970
1 -11 ½ NPSM	7/16 Inch	5/8 Inch	XCBH Large Handle Assembly	1.201/1.211
¾ - 18 NPSM	5/32 Inch	13/32 Inch	XCBH Small Handle Assembly	.603/.612
¾ - 16 UNC	¾ Inch	7/16 Inch	XMOB, XMOSS, Mini Operators	5/16

3. If Auxiliary Device contains undercut in engaging threaded section, the minimum wall thickness shown in Table I must increase to maintain the minimum required thread engagement. (Fig. A)

(continued next page)

FIG. A
SEE NOTE 3



Auxiliary Device Drilling & Tapping Guidelines

Spacing For Auxiliary Devices Installed in Box Walls Of Control Panel Enclosures Used In Hazardous Locations.

When using an Auxiliary Device in the box wall of an enclosure used in hazardous locations, proper installation requires compliance with the following (continued from previous page):

4. Table II provides the minimum distance an Auxiliary Device center can be placed from inside corner or back of box.

TABLE II

	$\frac{3}{8}$ - 16 UNC	$\frac{3}{8}$ NPSM	$\frac{1}{2}$ NPSM	$\frac{3}{4}$ NPSM	1 NPSM
Minimum Distance from auxiliary Device CL to corner or back of box	1 ½	1 ¾	1 ¾	1 ¾	2

5. Table III shows minimum spacing between conduit and Auxiliary Device entrances.

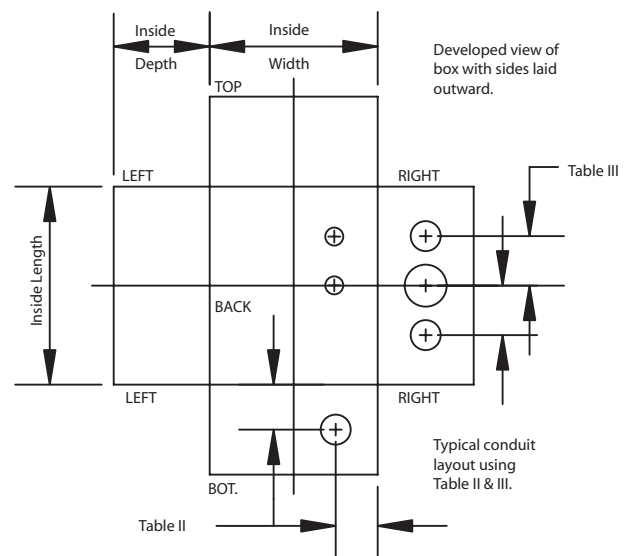
TABLE III

AUXILIARY DEVICE THREAD (In.)	5	4	3-½	3	2-½	2	1-½	1-¼	1	$\frac{3}{4}$	$\frac{1}{2}$
$\frac{3}{8}$	4 ½	3 ¾	3 ¾	3	2 ¾	2 ¾	2	1 ¾	1 ¾	1 ¾	1 ½
$\frac{1}{2}$	4 ¾	3 ¾	3 ½	3 ¾	2 ¾	2 ½	2 ¼	2 ½	2	1 ¾	1 ¾
$\frac{3}{4}$	4 ¾	4	3 ¾	3 ¼	2 ¾	2 ¾	2 ¾	2 ¼	2 ½	2	1 ¾
1	5	4 ¼	3 ¾	3 ½	3	2 ¾	2 ½	2 ¾	2 ¼	2 ½	2

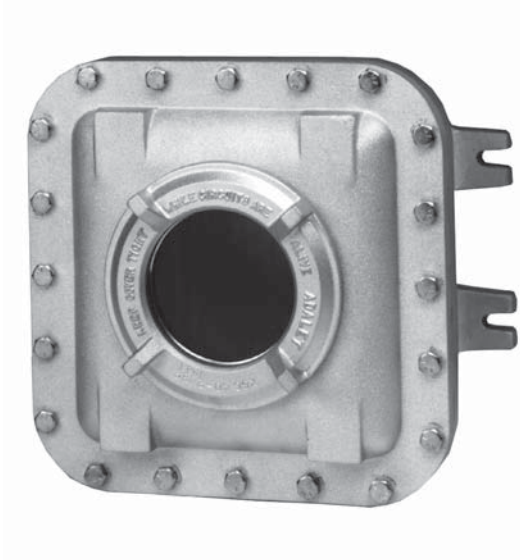
6. Table IV shows minimum spacing between auxiliary device entrances.
NOTE: Increase distance between devices as required to maintain minimum through air spacing of contacts required by electrical codes.
7. Double all distances in Table III and IV for holes located in back wall.

TABLE IV

MIN. SPACING BETWEEN AUX. DEVICE OF VARYING THREAD SIZES (INCHES)				
	$\frac{3}{8}$	$\frac{1}{2}$	$\frac{3}{4}$	1
$\frac{3}{8}$	1 ½	1 ½	1 ½	2 ½
$\frac{1}{2}$	1 ½	2	2	2 ½
$\frac{3}{4}$	1 ½	2	2	3
1	2 ½	2 ½	3	3 ½



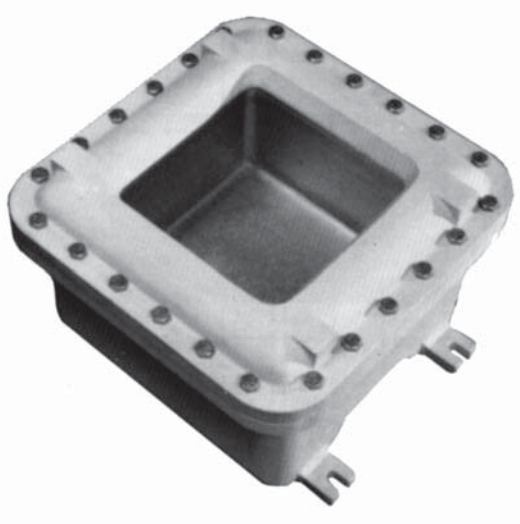
Glass Windows



CIRCULAR WINDOW

Circular Window	Window Viewing Area Diameter	Overall Window Cover Diameter	Min Enclosure Inside Width / Length	Thread
XGC 10	1 1/8	3	8	2 1/2-16
XGC 20	1 5/16	4 1/8	9	3 3/8-12
XGC 30	3	5 3/16	9	4 3/4 - 12
XGC 40	4	6 3/8	9	5 1/2 - 12
XGC 52	5 1/4	7 7/8	10	7 1/8 - 12
XGC 66	6 1/16	10 3/8	16	9 1/8 - 12
XGC 80	8	12 1/8	18	10 7/8 - 8

- NOTES**
1. All dimensions are in inches.
 2. Glass window catalog number includes XCE cover machining and installation.
 3. For TYPE 4/IP66 option add suffix "N4".
 4. To order glass windows for field installations, add suffix SLF to XGC catalog no.
 5. Consult factory for closer spacing requirements, multiple windows or combinations of operators and windows.



STANDARD RECTANGULAR WINDOW

Rectangular Window	Window Viewing Area Diameter	Min Enclosure Inside Width	Min Enclosure Inside Length
XGW 0303	3 X 3	8	8
XGW 0305	3 X 5	8	10
XGW 0307	3 X 7	8	12
XGW 0505	5 X 5	10	10
XGW 0509	5 X 9	10	14
XGW 0707	7 X 7	12	12
XGW 0713	7 X 13	12	18
XGW 0909	9 X 9	14	14
XGW 1111	11 X 11	16	16
XGW 1313	13 X 13	18	18

- NOTES**
1. All dimensions are in inches
 2. Glass window catalog number includes installation and pattern modifications.
 3. For TYPE 4 option add suffix "N4".
 4. Consult factory for special viewing area requirement, closer spacing and to combine windows with other window sizes or operators.
 5. Windows can be ordered in size between 3" and 13" – Consult Factory.