

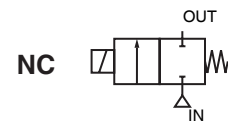
ASCO™

EXPRESS



Series	Page
110	2
210	3
215	4
220	5
223	6
238	7
256	8
262	9
282	10
291	11
284	12
292	13
353	14
356	15
E290	16
S290	18
290PD	20
189	22
190	23
314	24
316	25
320	27
327	28
344	30
384	31
385	32
458	33
HV293734	34
342	35
345	36
521	37
531	44
541&542	46
551	47
450	50
453	53
501	55
503	56
580	57
HV434441	58
C	59
G3	60
J3	61
RB	62
FRL	63
YA & YB	64
L172	67
L176	68
L182	69
L372	70
L376	71

Orders with a defined maximum quantity are scheduled to ship within 10 business days. Over maximum quantity, please contact with ASCO. The normal maximum order quantity (MOQ) is 10 pieces.



FEATURES

- Compact pilot boxes with direct operated, integrated pilot valves
- Especially designed for the remote control of pulse valves (series 353)
- Valve seats are integrated in base plate
- Common exhaust connection for just 1 or 2 (G 3/8") silencers
- Built-in heating elements for trouble free operation at low ambient temperatures
- Degree of protection: IP 65
- Facilities for integrated quick fittings



STANDARD VOLTAGES

DC (=) : 24V

AC (~) : 115V - 230V / 50 - 60 Hz

SPECIFICATIONS

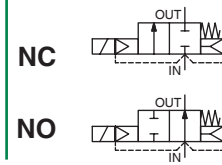
Number of Pilot Valves	Pipe Size	Orifice Size	Flow Coefficient Kv		Operating Pressure Differential (bar)		Catalog Number for the Boxes ⁽¹⁾
					Min.	Maximum (PS)	
						Air	
		(mm)	(m ³ /h)	(l/min)	~/=		With Out Heating
2	1/8	3.6	0.35	5.8	0	8.5	SG110A020
3							SG110A030
4							SG110A040
5							SG110A050
6							SG110A060
7							SG110A070
8							SG110A080
9							SG110A090
10							SG110A100
11							SG110A110
12							SG110A120

(1) Minimum ambient temperature without heating elements : 0°C

SOLENOID VALVES

pilot operated, hung diaphragm
brass or stainless steel bodies

3/8 - 2



2/2

Series

210

FEATURES

- Two way shut-off valves for the control air, inert gas, water, oil and other gases/ liquids compatible with the sealing material used
- Valves do not require a minimum operating pressure
- All products are covered by Pressure Equipment Directive 97/23/EC and are suitable for group 1 and 2 fluids
- The solenoid valves satisfy all relevant EC directives

STANDARD VOLTAGES

DC (=) : 24V

AC (-) : 24V/50 - 22V/50, 24V/60 - 100V/50, 110V/60 - 110V/50,
120V/60 - 115V/60 - 115~120V/50 - 208V/60 - 220V/50,
240V/60 - 230~240V/50



SPECIFICATIONS

Pipe Size	Orifice Size	Flow Coefficient Kv		Operating Pressure Differential (bar)						Prefix							Catalog Number		Option												
				Max. (PS)						SC	VC	EF/VCEF ⁽⁴⁾	HB	HT	JKF	JKP	Red Hat II NEMA 4	Brass	Stainless Steel	FPM	EPDM										
				Air		Water		Oil																							
	(mm)	(m ³ /h)	(l/min)	Min.	~	=	~	=	~	=																					
NC - Normally closed																															
3/8	10	1.3	22	- ⁽⁵⁾	10	3	9	3	-	-	•	•	•	-	-	•	-	•	-	-	-	-	-	-	8210G036	V	-				
3/8	16	2.6	43	0.3	14	9	10	7	9	7	•	•	•	-	•	•	-	-	-	-	-	-	-	-	8210G001	-	V	-			
1/2	11	1.9	32	0	10	3	9	3	-	-	-	•	•	-	•	•	-	•	-	-	-	-	-	-	8210G015	-	-	-			
1/2	11	1.9	32	0	10	3	9	3	-	-	-	•	•	-	•	•	-	•	-	-	-	-	-	-	8210G037	V	E				
1/2	16	3.4	57	0	9	3	9	3	-	-	•	-	-	-	-	-	-	-	-	-	-	-	-	-	E210C094	-	-	-			
1/2	16	3.4	57	0	10	3	10	3	-	-	•	•	•	-	•	•	-	•	-	-	-	-	-	-	8210G094	-	V	-			
1/2	16	3.4	57	0.3	14	9	10	7	9	7	•	•	•	-	•	•	-	•	-	-	-	-	-	-	8210G002	-	V	E			
1/2	16	3.4	57	0	10	3	10	3	9	-	-	•	•	• ⁽³⁾	• ⁽²⁾	• ⁽²⁾	-	•	-	-	-	-	-	-	-	-	8210G087	V	-		
3/4	16	3.9	65	0	10	3	10	3	9	-	-	•	•	• ⁽³⁾	• ⁽²⁾	• ⁽²⁾	-	•	-	-	-	-	-	-	-	-	8210G088	V	E		
3/4	19	4.3	72	0	9	3	9	3	-	-	•	-	-	-	-	-	-	-	-	-	-	-	-	-	E210D095	-	V	E			
3/4	19	4.3	72	0	10	3	10	3	-	-	•	•	•	-	•	•	-	•	-	-	-	-	-	-	-	8210G095	-	V	-		
3/4	19	4.3	72	0.3	9	7	9	6	9	5	•	•	•	-	•	•	-	•	-	-	-	-	-	-	-	8210G009	-	V	E		
1	25	11.1	185	0.3	9	9	9	9	9	9	•	-	-	-	-	-	-	-	-	-	-	-	-	-	-	E210D004 ⁽¹⁾	-	-	-		
1	25	11	183	0.3	10	9	10	9	7	9	•	•	•	-	•	•	-	•	-	-	-	-	-	-	-	-	8210G004	-	V	-	
1	25	11	183	0	10	-	9	-	9	-	• ⁽³⁾	•	• ⁽³⁾	-	• ⁽³⁾	-	-	•	-	-	-	-	-	-	-	-	8210G054	-	V	-	
1	25	11	183	0	10	7	9	7	9	6	• ⁽⁴⁾	•	•	-	-	• ⁽³⁾	-	•	-	-	-	-	-	-	-	-	8210G089	V	E ⁽³⁾		
1 1/4	28	12.8	213	0	9	6	9	6	9	6	•	-	-	-	-	-	-	-	-	-	-	-	-	-	-	E210B155 ⁽³⁾	-	V	-		
1 1/2	32	19.5	325	0	10	7	9	7	9	6	• ⁽³⁾	•	• ⁽³⁾	-	• ⁽³⁾	-	-	•	-	-	-	-	-	-	-	-	8210G056	-	V	-	
1 1/2	32	19.5	325	0.3	10	9	10	9	7	9	•	•	•	-	•	•	-	•	-	-	-	-	-	-	-	-	8210G022	-	V	-	
1 1/2	32	19.5	325	0	10	-	9	-	9	-	-	-	-	-	-	-	-	-	-	-	-	-	-	-	-	-	XE210G056 ⁽⁶⁾	-	-	E	
2	44	37	617	0.3	10	6	9	3	9	3	•	•	•	-	•	•	-	•	-	-	-	-	-	-	-	-	8210G100	-	V	-	
Gas shut-off - Normally closed																															
1/2	16	3.1	52	0.3	17	-	-	-	-	-	•	•	•	-	•	•	-	•	-	-	-	-	-	-	-	-	8210G106B	-	-	-	
1/2	16	3.1	52	0	3.4	-	-	-	-	-	•	•	•	-	•	•	-	•	-	-	-	-	-	-	-	-	-	8210G075	-	V	-
3/4	16	4.3	72	0	3.4	-	-	-	-	-	•	•	•	-	•	•	-	•	-	-	-	-	-	-	-	-	-	8210G076	-	V	-
NO - Normally open																															
1/2	16	3.4	57	0	10	9	10	9	9	6	•	•	•	-	•	•	-	•	-	-	-	-	-	-	-	-	-	8210G034	-	V	E

• Available Express

(1) TPL 25848: valve with 3-solenoid for normally open > 0 bar and closed at 0 bar and with special body and high shock clip

(2) DC only

(3) AC only

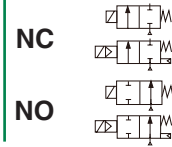
(4) VCEF can be mounted in 4 directions & 3 conduit sizes

(5) 0.3 bar on Air; 0.0 bar on Water

(6) TPL 19880: special DZR brass body & bonnet

SOLENOID VALVES

high flow low pressure
aluminum body
1/8 - 3



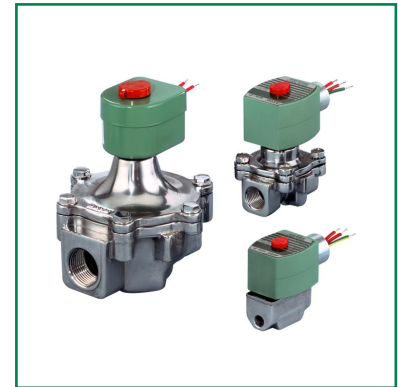
2/2
Series
215

FEATURES

- Lightweight, low-cost valves for air service
- Ideal for low pressure applications
- Provides high flow, Cv up to 138 (Kv 118)
- Air and vacuum service

STANDARD VOLTAGES

AC (-) : 110V - 120V - 208V - 220V - 240V / 50 - 60 Hz



SPECIFICATIONS

Pipe Size (in)	Orifice Size (mm)	Kv Flow Factor (m³/h)	Gas Capacity Btu/hr	Operating Pressure Differential (bar)			Max. Fluid Temp. °C		Prefix				Catalog Number
				Min.	Max. AC Air-Fuel Gas	Max. DC Air-Fuel Gas	AC	DC	EF/VCEF ⁽²⁾	HT	JKF	Red Hat NEMA 4	Aluminum Body
NC - Normally closed (Closed when de-energized)													
1/2	19	3.8	238500	0	3.4	1.7	52	40	•	•	-	•	8215G020
3/4	19	4.4	247500	0	3.4	1.7	52	40	•	•	-	•	8215G030
1	41	18	1119000	0	1.7	-	52	-	-	•	-	•	8215B050
1	41	18	1119000	0	-	1.7	-	40	•	-	•	•	8215G050
2	53	51	3251000	0	1.7	-	53	-	-	•	-	•	8215B070
2	53	51	3251000	0	-	1	-	40	•	•	-	•	8215G070
2	53	51	3251000	0	1.7	-	52	-	-	•	-	•	8215B080
2	53	51	3251000	0	-	1	-	40	•	•	-	•	8215G080
NO - Normally open (Open when de-energized)													
1/2	19	3.4	206250	0	8.6	8.6	52	40	•	-	-	•	8215G023
3/4	19	3.9	247500	0	8.6	8.6	52	40	•	-	•	•	8215G033
1 1/2	41	32	1988250	0	1.7	1	52	25	-	-	-	• ⁽¹⁾	8215C073
1 1/2	41	32	1988250	0	1.7	1	52	25	-	-	-	•	8215G073

• Available Express

(1) AC only

(2) VCEF can be mounted in 4 directions & 3 conduit sizes

FEATURES

- Hot water service to 210 psi differential @ 210°F;
Steam service to 125 psi differential @ 353°F
- Specify these valves for the high-temperature applications found in laundries, molding, steam atomization, sterilizers, autoclaves, and many others
- Series 8263: direct acting miniature valves
- Series 8267: direct acting straight-through, self-cleaning design
- Series 8210/8220: pilot operated diaphragm valves
- Series 8220: pilot operated diaphragm and piston valves; floating PTFE diaphragms or stainless steel pistons with EPDM or PTFE discs, available in both AC & DC voltages
- Series 8221: slow-closing, anti-water hammer design
- Series 8222: pilot operated diaphragm and piston valves.
Y-body floating piston design



STANDARD VOLTAGES

AC (~) : 110V - 120V - 220V - 240V / 50 - 60 Hz

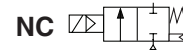
SPECIFICATIONS

Pipe Size (in)	Orifice Size (mm)	Kv Flow Factor (m ³ /h)	Operating Pressure Differential (bar)				Max. Fluid Temp. °C				Prefix		Catalog Number	
			Min.	Max. AC		Max. DC		AC		DC		JKH		Red Hat II NEMA 4
				Steam	Hot Water	Steam	Hot Water	Steam	Hot Water	Steam	Hot Water		Brass Body	
STEAM/HOT WATER SERVICE - PILOT OPERATED - NORMALLY CLOSED (Closed when de-energized)														
1	25	11.57	0.3	9	10.3	-	-	178	99	-	-	•	•	8220G025
1/2	16	4	0.3	9	10	-	-	177	98	-	-	•	•	8220G021
3/4	19	7.5	0.3	9	10	-	-	177	98	-	-	•	•	8220G023

- Available Express

SOLENOID VALVES

high pressure
brass or stainless steel bodies
1/4 - 3/4



2/2
Series
223

FEATURES

- Rugged piston construction built to withstand pressure ratings to 1500 psi
- Angle body design for high flows
- Ideal for high-pressure water applications, such as car washes
- Mountable in any position

STANDARD VOLTAGES

DC (=) : 24V

AC (-) : 110V - 120V - 220V - 230V - 240V / 50 - 60 Hz

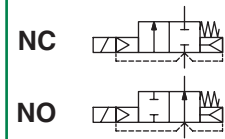


SPECIFICATIONS

Pipe Size (in)	Orifice Size (mm)	Kv Flow Factor (m ³ /h)	Operating Pressure Differential (bar)							Max. Fluid Temp. °C		Prefix				Catalog Number	
			Min.	Max. AC			Max. DC			AC	DC	VC	EF/VCEF ⁽¹⁾	HB	Red Hat II NEMA 4	Brass	Stainless Steel
				Air-Inert Gas	Water	Light Oil @ 300 SSU	Air-Inert Gas	Water	Light Oil @ 300 SSU								
NC - Normally closed (Closed when de-energized)																	
3/8	8	1.3	0.7	52	52	52	28	28	28	93	65	-	•	-	•	8223G023	-
1/2	10	2.7	1.7	103	103	103	34	34	34	93	65	•	•	•	•	8223G003	-
1/2	10	2.7	1.7	103	103	103	34	34	34	93	65	•	•	•	•	-	8223G010

• Available Express

(1) VCEF can be mounted in 4 directions & 3 conduit sizes



FEATURES

- Minimum operating pressure differential ΔP 0.3/0.5 bar
- Two way valves for automatic control of water, air and inert gas and other gases/liquids compatible with the sealing materials used
- Interchangeability of magnetic heads, AC and DC
- The solenoid valves satisfy all relevant EC Directives

STANDARD VOLTAGES

DC (=) : 24V

AC (-) : 24V - 48V - 110V - 220V - 230V - 240V / 50 - 60 Hz



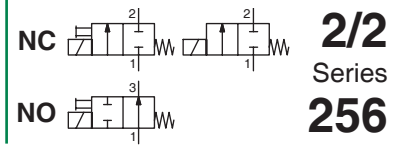
SPECIFICATIONS

Pipe Size	Orifice Size	Flow Coefficient Kv		Operating Pressure Differential (bar)			Power Coil (W)		Prefix	Catalog Number	Option				
				Min.	Max. (PS)		~	=			~	=	SC	Maintained	Man. Operator
					~	=									
G	(mm)	(m ³ /h)	(l/min)		~	=	~	=							
NC - Normally closed															
3/8	12.5	2.1	35	0	10	10	6	15.3	•	G238A044	-	-			
1/2	12.5	2.1	35	0	10	10	6	15.3	•	G238A046	-	-			
3/4	19	4.5	75	0	10	10	6	15.3	•	G238A048	-	-			
1	25	10	166	0	10	10	9	15.3	•	G238A050	-	-			
3/8	12	2.4	40	0.3	10	10	4	6.9	•	E238D001	-	-			
1/2	12	2.4	40	0.3	10	10	4	6.9	•	E238D002	-	-			
1/2	15	4.2	70	0.3	10	10	4	6.9	•	E238D003	MO	-			
3/4	20	6.6	110	0.3	10	10	4	6.9	•	E238D004	MO	-			
1	25	9.9	165	0.3	10	10	4	6.9	•	E238D005	MO	-			
3/8	12	2.4	40	0.3	16	16	5	6.9	•	E238D006	-	-			
1/2	12	2.4	40	0.3	16	16	5	6.9	•	E238D007	-	-			
1/2	15	4.2	70	0.3	16	16	5	6.9	•	E238D008	MO	-			
3/4	20	6.6	110	0.3	16	16	5	6.9	•	E238D009	MO	V			
1	25	9.9	165	0.3	16	16	5	6.9	•	E238D010	MO	-			
1 1/4	30	15	250	1/2	10	10	8	9	•	G238E016	MO	V			
1 1/2	45	27	450	0.5	10	10	8	9	•	G238E017	MO	V			
2	45	34	566	0.5	10	10	8	9	•	G238E018	MO	V			

- Available Express

SOLENOID VALVES

direct operated
brass or stainless steel bodies
1/8 - 1/4



FEATURES

- Wide range of flow and pressure ratings
- Quick disassembly of core tube for easy maintenance of internal parts
- Standard disc seal made of FPM suitable for a wide range of operating temperatures and compatible with many fluids
- Standard manual operator allows an easy installation (Except 4 and 5 mm orifice sizes)
- AC/DC interchangeability of the solenoid without disassembly of the valve
- Compact and low weight valve



STANDARD VOLTAGES

DC (=) : 24V

AC (-) : 24V - 48V - 110V - 220V - 230V / 50 - 60 Hz

SPECIFICATIONS

Pipe Size	Orifice Size	Flow Coefficient Kv		Operating Pressure Differential (bar)								Power Coil (W)		Prefix			Catalog Number		Options
				max. (PS)													Brass	Stainless Steel	
				Air		Water		Oil		~	=								
G	(mm)	(m ³ /h)	(l/min)	Min.	~	=	~	=	~			=	~	=	SC	PV	U	~/=	~/=
NC - Normally closed																			
1/8	1.2	0.05	0.8	0	28	20	28	20	28	20	4	6.9	•	-	-	G256B001V	-	MS	
1/8	1.6	0.08	1.33	0	20	12	20	12	20	12	4	6.9	•	-	•	-	8256B014V	-	
1/8	1.6	0.08	1.33	0	20	12	20	12	20	12	4	6.9	•	-	-	G256B002V	G256B014V	MS	
1/8	2	0.11	1.83	0	15	6	15	6	15	6	4	6.9	•	-	-	G256B003V	-	-	
1/8	2	0.11	1.83	0	15	6	15	6	15	6	4	6.9	•	-	-	-	G256B015V	MS	
1/8	2.4	0.13	2.16	0	12	4	12	4	12	4	4	6.9	•	-	-	G256B004V	-	-	
1/8	2.4	0.13	2.16	0	12	4	12	4	12	4	4	6.9	•	-	•	-	8256B016V	-	
1/8	2.4	0.13	2.16	0	12	4	12	4	12	4	4	6.9	•	-	-	-	G256B016V	MS	
1/4	1.6	0.08	1.33	0	20	12	20	12	20	12	4	6.9	-	•	-	-	G256A414V ⁽¹⁾	-	
1/4	1.6	0.08	1.33	0	20	12	20	12	20	12	4	6.9	•	-	-	-	8256B414V	-	
1/4	1.6	0.08	1.33	0	20	12	20	12	20	12	4	6.9	•	-	-	G256B402V	G256B414V	MS	
1/4	1.6	0.08	1.33	0	20	15	20	15	20	15	5	6.9	•	-	-	G256B466V	-	MS	
1/4	1.6	0.08	1.33	0	20	15	20	15	20	15	5	6.9	•	-	-	-	8256B434V	-	
1/4	1.6	0.08	1.33	0	20	15	20	15	20	15	5	6.9	•	-	-	-	G256B434V	MS	
1/4	2.4	0.16	2.67	0	12	4	12	4	12	4	4	6.9	•	-	-	G256B404V	G256B416V	MS	
1/4	2.4	0.16	2.67	0	15	8	15	8	15	8	5	6.9	•	-	-	G256B470V	G256B436V	MS	

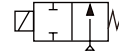
• Available Express

(1) TPL 24071: 256 series with lower rating PV coil 3 watt

SOLENOID VALVES

direct operated
brass or stainless steel bodies
1/8 - 3/8

NO



2/2
Series
262

FEATURES

- *Reliable, proven design with high flows*
- *Small poppet valves for tight shutoff*
- *Wide range of elastomers for specialty service*
- *Mountable in any position*
- *Brass and stainless steel constructions*

STANDARD VOLTAGES

DC (=) : 24V

AC (-) : 110V - 120V - 220V - 240V / 50 - 60 Hz



SPECIFICATIONS

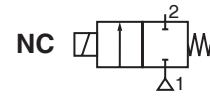
Pipe Size (in)	Orifice Size (mm)	Kv Flow Factor (m ³ /h)	Min Press	Operating Pressure Differential (bar)						Max. Fluid Temp °C		Prefix		Catalog Number
				Max AC @ 55°C			Max DC @ 55°C							
				Air-Inert Gas	Water	Lt. Oil @300 SSU	Air-Inert Gas	Water	Lt. Oil @300 SSU	AC	DC	EF/VCEF ⁽¹⁾	Red Hat II NEMA 4	Brass
1/4	1.2	0.05	0	52	52	52	45	39	28	82	82	•	•	8262H260
1/4	2.4	0.18	0	19	16	12	11	9	7	82	82	•	•	8262H261

• Available Express

(1) VCEF can be mounted in 4 directions & 3 conduit sizes

PLASTIC VALVE MANIFOLD

diaphragm mechanism, fluid isolation
M6 & 1/4 - 28 UNF



2/2
Series
X282

FEATURES

- Solenoid valves for medical analysers, biotechnology and chemical industry
- Any application where the fluid may not come into contact with the electromagnetic control section of the solenoid valves
- The solenoid valves are ideal for controlling aggressive fluids and have easy to flush internal cavities

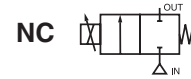


STANDARD VOLTAGES

DC (=) : 12V - 24V

SPECIFICATIONS

Pipe Size	Orifice Size (mm)	Flow Coefficient Kv		Operating Pressure Differential (bar)			Power Coil (W)	Catalog Number
		(m ³ /h)	(l/min)	Min.	Max. (PS)			
					Air, Inert Gases	Liquids		
=	=	=	=	=	=			
NC - Normally closed								
X282 8-STATIONS 24DC, Blind Hole, M6, 8°FPM	1.5	0.04	0.66	0	2	2	2.5	X282433248001F1
X282 8-STATIONS 24DC, Blind Hole, M6, 5°FPM, 3°FPM (1,2,3)								X282433248002F1
X282 8-STATIONS 24DC, Through Hole, 1/4-28, 8°FPM								X282433248003F1
X282 8-STATIONS 24DC, Through Hole, 1/4-28, 7°FPM, 1°FPM (1)								X282433248004F1
X282 8-STATIONS 24DC, Blind Hole, 1/4-28, 7°FPM, 1°FPM (1)								X282433248006F1
X282 8-STATIONS 24DC, Through Hole, 1/4-28, 8°FPM								X282433248008F1
X282 8-STATIONS 24DC, Blind Hole, M6, 5°FPM, 3°FPM (4,5,6)								X282433248010F1
X282 8-STATIONS 24DC, Through Hole, 1/4-28, 7°FPM, 1°FPM (4)								X282433248011F1
X282 8-STATIONS 24DC, Blind Hole, 1/4-28, 8°FPM								X282433248012F1
X282 8-STATIONS 24DC, Blind Hole, 1/4-28, 5°FPM, 3°FPM (1,2,3)								X282433248013F1
X282 8-STATIONS 24DC, Blind Hole, 1/4-28, 8°FPM								X282433248015F1
X282 4-STATIONS 12DC, Blind Hole, 5*1/4-28, FPM Diaphragm, PVDF Valve Body								X282433251001F3
X282 4-STATIONS 24DC, Blind Hole, 5*1/4-28, FPM Diaphragm, PVDF Valve Body, 2.5W								X282433251007F1



FEATURES

- The proportional solenoid valves can handle a variable flow of fuel vapour, proportional to the control signal
- The high quality FPM disc core construction guarantees a long operating life and a wide temperature range
- Explosion proof operator, intended for use in potentially explosive areas, according to Directive ATEX 94/9/EC
- Easy electrical installation by means of the moulded-in supply cable, standard length of 2 meter
- ASCO Numatics components satisfy all relevant EC directives



STANDARD VOLTAGES

DC (=) : 24V

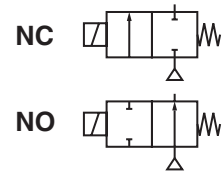
SPECIFICATIONS

Pipe Size	Orifice Size	Flow Coefficient Kv		Operating Pressure Differential (bar)		Prefix	Catalog Number
				Min	Max. PS		
G	(mm)	(m ³ /h)	(l/min)		=	PV	
NC - Normally closed							
1/4	5.6	0.73	12.2	0	1	•	291A210
3/4	20	3.9	65	0.3	3.5	•	XG291A111 ⁽¹⁾

• Available Express
 (1) PVXG291A111 proportional valve conform drawing 131089

PINCH SOLENOID VALVE

pinch mechanism
for flexible tube
O.D. 3.2 mm



2/2
Series
284

FEATURES

- Solenoid valve suitable for cutting off the flow of a fluid by pinch
- For sterile, aseptic, physiological and food applications
- No turbulence or gap when cutting off flow by pinch
- Silent operation
- Full bore output flow compared with a traditional solenoid valve
- Manual pulse control for fitting tube
- A single component in contact with the fluid, i.e. the tube
- Bi-directional flow
- The tubings are included in our supply, 30cm length
- The solenoid valves satisfy all relevant EC directives



STANDARD VOLTAGES

DC (=) : 12V - 24V

SPECIFICATIONS

Tube I.D. (mm)	Tube O.D. (mm)	Pinch Force (daN)	Operating Pressure Differential (bar)			Power Coil (W)		Catalog Number
			Min.	Max. (PS)		~	=	
				Air Inert Gas (*)	Liquids (*)			
				=	=		=	
1.6	3.2	0.28	0	1.5	1.5	-	2.8	P284A020LCA00V1 P284A020LCA00V3 P284A021LCA00V1 ⁽¹⁾ P284A021LCA00V3 ⁽¹⁾
1.6	3.2	0.6	0	1.5	1.5	-	2.8	P284A022LCA00V1 P284A022LCA00V3 P284A023LCA00V1 ⁽¹⁾ P284A023LCA00V3 ⁽¹⁾

(1) The flange is rotatable with 90°

FEATURES

- The normally closed petrol dispensing valves are especially designed to meet the particular needs for the fuel dispensers
- Valve offers three flow positions, i.e. full flow, low flow, and shut off
- Minimum operating differential pressure 0.35 bar
- Explosion proof operator, intended for use in potential explosive areas, according to Directive ATEX 94/9/EC
- Easy electrical installation by means of the moulded-in supply cable, standard length 2 meter
- ASCO Numatics components satisfy all relevant EC directives
- Can resist M15 and E20 Petrol



STANDARD VOLTAGES

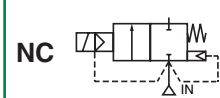
AC (~) : 220 / 50 - 60 Hz

SPECIFICATIONS

Pipe Size	Orifice Size	Flow Coefficient Kv				Operating Pressure Differential (bar)			Prefix	Catalog Number
		Low		High		Min	Max. PS			
T	(mm)	(m ³ /h)	(l/min)	(m ³ /h)	(l/min)			~	=	PV
NC - Normally closed										
3/4	2.5	0.1	1.7	4.3	72	0.35	2.7	2.7	•	T29227 ⁽¹⁾
1	25	0.12	2	11.5	192	0.35	3.5	3.5	•	T292B25 ⁽²⁾

• Available Express

- (1) TPL 24004: Flange body with 4 drilled dia 8.5 mm through hole for PVT29227
 TPL 24035: PVT valve, high flow construction
 TPL 24043: PVT29227 coil lead wire direction is at oil outlet side
 TPL 24015: Flange body with 4 tapped M8 thread mounting hole for PVT29227
- (2) TPL 24037: PVT292B025 with different coil mounting direction & wire identification



FEATURES

- The diaphragm pulse valves are especially designed for dust collector service applications, combining high flow, long life and extremely fast opening and closing to produce reliable and economical operation
- The high flow, angle type bodies, springless construction, in combination with the special diaphragm assemblies give the unique operating features required for dust collector service applications
- Integral compression fittings for fast, easy, secure installation
- Built-in silencers reduce noise and prevent foreign particles from entering the valve
- The integral operators are provided with epoxy moulded F-class coils. Various optional waterproof and explosionproof solenoids for use in potentially explosive atmospheres (gas & dust) according to Directive ATEX 94/9/EC can be mounted on the same basic valve
- The valves satisfy all relevant EC directives



STANDARD VOLTAGES

DC (=) : 24V

AC (-) : 24V - 100V - 110V - 200V - 220V - 230V - 240V / 50 - 60 Hz

SPECIFICATIONS

Pipe Size	Orifice Size	Flow Coefficient Kv		Operating Pressure Differential (bar)			Prefix			Catalog Number
				Min.	Max. (PS)					
					(mm)	(m ³ /h)	(l/min)	~	=	
Remote pilot (G - Threaded pipe connection)										
3/4	24	14	233	0.35	8.5	8.5				G353A041
3/4	24	14	233	0.35	8.5	8.5				J353A041 ⁽¹⁾
1	27	17	283	0.35	8.5	8.5				G353A042
1	27	17	283	0.35	8.5	8.5				J353A042 ⁽¹⁾
1 1/2	52	46	768	0.35	8.5	8.5				J353A045 ⁽¹⁾
Remote pilot (Ø - Compression fitting pipe connection)										
3/4	24	14	283	0.35	8.5	8.5				G353.055
1	27	17	283	0.35	8.5	8.5				G353.056
Integral pilot (G - Threaded pipe connection)										
3/4	24	14	233	0.35	8.5	8.5	•	-	-	G353A043
3/4	24	14	233	0.35	8.5	8.5	•	-	-	J353A043 ⁽²⁾
3/4	24	14	233	0.35	8.5	8.5	-	-	•	G353G043
1	27	17	283	0.35	8.5	8.5	•	-	-	G353A044
1	27	17	283	0.35	8.5	8.5	•	-	-	J353A044 ⁽²⁾
1	27	17	283	0.35	8.5	8.5	-	-	•	G353G044
1 1/2	52	44	733	0.35	8.5	8.5	•	• ⁽⁴⁾	-	G353A047
2	66	77	1290	0.35	8.5	8.5	•	-	-	G353A050
2 1/2	66	92	1540	0.35	8.5	8.5	•	•	-	G353A051 ⁽³⁾
Integral pilot (Ø - Compression fitting pipe connection)										
3/4	24	14	233	0.35	8.5	8.5	•	-	•	G353.052
1	27	17	283	0.35	8.5	8.5	•	-	•	G353.053
1 1/2	52	44	733	0.35	8.5	8.5	•	-	-	G353A065
Tank Mounted Version										
3 1/2	90	280	4667	1	6	6	•	-	-	R353A235

• Available Express

(1) TPL 19211: None external leakage, except slight external wicking

(2) TPL 19212: None external leakage & special coil for both 60Hz and 50Hz usage

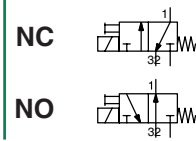
(3) TPL 18535: Valve with spring diaphragm

(4) DC only

(5) VCEF can be mounted in 4 directions & 3 conduit sizes

SOLENOID VALVES

direct operated
brass or stainless steel bodies
1/8 - 1/4



2/2
Series
356

FEATURES

- Compact design for the control of single-acting actuators or filling and draining cycles
- Wide range of flow and pressure ratings
- Quick disassembly of core tube for easy maintenance of internal parts
- Standard disc seal made of FPM suitable for a wide range of operating temperatures and compatible with many fluids
- Standard manual operator allows an easy installation
- AC/DC interchangeability of the solenoid without disassembly of the valve
- Compact and low weight valve



STANDARD VOLTAGES

DC (=) : 24V

AC (-) : 48V - 110V - 115V - 120V - 220V - 230V / 50 - 60 Hz

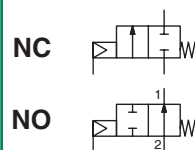
SPECIFICATIONS

Pipe Size	Orifice Size	Flow Coefficient Kv				Operating Pressure Differential (bar)			Power Coil (W)		Prefix		Catalog Number		Options
		2 → 1		3 → 1		Min.	Max. (PS)		~	=	SC	U	Brass	Stainless Steel	
		(m³/h)	(l/min)	(m³/h)	(l/min)		~	=							
G	(mm)	(m³/h)	(l/min)	(m³/h)	(l/min)										
NC - Normally closed															
1/8	1.2	0.05	0.8	0.05	0.8	0	15	15	4	6.9	●	-	8356B001V	-	-
1/8	1.2	0.05	0.8	0.05	0.8	0	15	15	4	6.9	●	-	G356B001V	-	MS
1/8	1.6	0.08	1.33	0.05	0.8	0	10	10	4	6.9	●	-	G356B002V	-	MS
1/8	2	0.1	1.66	0.05	0.8	0	5	5	4	6.9	●	-	G356B003V	-	-
1/8	1.2	0.05	0.8	0.05	0.8	0	15	15	4	6.9	●	-	-	8356B013V	-
1/8	2	0.1	1.66	0.05	0.8	0	5	5	4	6.9	●	-	-	G356B015V	MS
1/8	2.4	0.13	2.1	0.05	0.8	0	4	4	4	6.9	●	-	G356B004V	-	-
1/8	2.4	0.13	2.1	0.05	0.8	0	4	4	4	6.9	-	●	-	8356B016V	-
1/8	2.4	0.13	2.1	0.05	0.8	0	4	4	4	6.9	●	-	-	G356B016V	MS
1/4	1.6	0.08	1.33	0.05	0.8	0	10	10	5	6.9	●	-	-	8356B434V	-
1/4	1.6	0.08	1.33	0.05	0.8	0	10	10	5	6.9	●	-	G356B466V	G356B434V	MS
1/4	2.4	0.16	2.67	0.05	0.8	0	4	4	5	6.9	●	-	G356B470V	G356B436V	MS
NO - Normally open															
1/8	1.2	0.05	0.8	0.05	0.8	0	8.5	8.5	4	6.9	●	-	8356B005V	-	-
1/8	1.6	0.096	1.6	0.05	0.8	0	8.5	8.5	4	6.9	●	-	G356B006V	-	MS
U - Universal															
1/8	1.2	0.05	0.8	0.05	0.8	0	7	7	4	6.9	-	●	8356B009V	-	-

● Available Express

ANGLE SEATED VALVES

stainless steel body
3/8 - 2 1/2



2/2
Series
E290

FEATURES

- High flow due to angled seat design
- Anti-waterhammer design (fluid entry under the disc)
- Vacuum operation up to 10-2 mbar
- Wide range of piston-type operators (32 - 50- 63 - 90 -125 mm dia.) rotatable through 360°, for maximum performance at different minimum pilot pressures
- High performance, maintenance-free stuffing box
- The valves satisfy Pressure Equipment Directive 97/23/EC, category 1 (DN > 25) or article 3.3(DN ≤ 25)



SPECIFICATIONS

Piping (ISO 6708)		Flow Coefficient Kv		Pilot Pressure (bar)		Operating Pressure Differential (bar)				Operator Diameter	Catalog Number	Suffix
Pipe Size	DN	(m³/h)	(l/min)	Min.	Max.	Min.	Max.			(mm)	Stainless steel	
(G*)							Air, Inert gas, Aggressive Fluids	Water, Oil, Liquids, Aggressive Liquids	Steam (≤184°C)			
NC - Normally closed, entry under the disc⁽¹⁾												
3/8	10	2.8	47	4	10	0	16	16	10	32	E290A791	-
1/2	15	4.1	68	4	10	0	12	12	10	32	E290A792	-
1/2	15	4.9	82	4	10	0	16	16	10	50	E290A393	PD VI
1/2	15	4.9	82	2.5	10	0	16	16	10	63	D290B045	PD
3/4	20	6.5	108	4	10	0	6	6	6	32	E290A793	-
3/4	20	9.4	157	4	10	0	10	10	10	50	E290A394	PD VI
3/4	20	9.4	157	4	10	0	16	16	10	63	E290B048	PD
3/4	20	9.4	157	2.5	10	0	12	12	10	63	E290B047	PD
1	25	12.8	213	4	10	0	6	6	6	50	E290A395	VI
1	25	16.5	275	4	10	0	10	10	10	63	D290B053	PD
1	25	16.5	275	4	10	0	10	10	10	63	E290B053	PD
1	25	16.5	275	4	10	0	16	16	10	90	D290B054	PD
1	25	16.5	275	2.5	10	0	6	6	6	63	E290B051	-
1	25	16.5	275	2.5	10	0	12	12	10	90	E290B052	-
1 1/4	32	27	450	4	10	0	6	6	6	63	D290A059	-
1 1/4	32	27	450	4	10	0	12	12	10	90	D290A060	-
1 1/4	32	27	450	2.5	10	0	3	3	3	63	D290A057	-
1 1/4	32	27	450	2.5	10	0	3	3	3	63	E290A057	-
1 1/4	32	27	450	2.5	10	0	7	7	7	90	D290A058	-
1 1/4	32	27	450	2.5	10	0	7	7	7	90	E290A058	-
1 1/4	32	27	450	4	10	0	6	6	6	63	E290A059	-
1 1/4	32	27	450	4	10	0	12	12	10	90	E290A060	-
1 1/2	40	45	750	4	10	0	4	4	4	63	E290A063	-
1 1/2	40	45	750	4	10	0	8	8	8	90	E290A064	-
1 1/2	40	45	750	2.5	10	0	4	4	4	90	E290A062	-
2	50	59	983	4	10	0	2.5	2.5	2.5	63	E290A067	-
2	50	59	983	4	10	0	6	6	6	90	E290A068	PD
2	50	59	983	2.5	10	0	2.5	2.5	2.5	90	D290A066	-
2 1/2	65	94	1567	4	10	0	2	2	2	90	E290A500	-

Express delivery

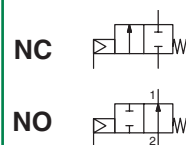
SPECIFICATIONS

Piping (ISO 6708)		Flow Coefficient Kv		Pilot Pressure (bar)		Operating Pressure Differential (bar)				Operator Diameter	Catalog Number	Suffix
Pipe Size	DN	(m ³ /h)	(l/min)	Min.	Max.	Min.	Max.			(mm)	Stainless Steel	
(G*)							Air, Inert gas, Aggressive Fluids	Water, Oil, Liquids, Aggressive Liquids	Steam (≤184°C)			
NO - Normally open, entry under the disc												
3/8	10	2.8	47	IX (*)	10	0	16	16	10	32	E290A794	-
1/2	15	4.1	68	IX (*)	10	0	16	16	10	32	E290A795	-
1/2	15	4.9	82	I (*)	10	0	16	16	10	50	E290A396	-
1/2	15	4.9	82	II (*)	10	0	16	16	10	63	E290B069	-
3/4	20	6.5	108	IX (*)	10	0	16	16	10	32	E290A796	-
3/4	20	9.4	157	I (*)	10	0	16	16	10	50	E290A397	-
3/4	20	9.4	157	II (*)	10	0	16	16	10	63	E290B070	-
1	25	12.8	213	I (*)	10	0	16	16	10	50	-	-
1	25	16.5	275	II(*)	10	0	16	16	10	63	E290B071	-
1	25	16.5	275	III(*)	10	0	16	16	10	90	E290B072	-
1 1/4	32	27	450	II (*)	10	0	16	16	10	63	E290A073	-
1 1/4	32	27	450	III (*)	10	0	16	16	10	90	E290A074	-
1 1/2	40	45	750	II (*)	10	0	11	11	10	63	E290A075	-
1 1/2	40	45	750	III (*)	10	0	16	16	10	90	E290A076	-
2	50	59	983	II (*)	10	0	7	7	7	63	E290A077	-
2	50	59	983	III (*)	10	0	13	13	10	90	E290A078	-
2 1/2	65	94	1567	III (*)	10	0	7	7	7	90	E290A504	-
NC - Normally closed, entry above the disc (version recommended for rapid-cycling steam applications)												
3/8	10	2.8	47	X (*)	10	0	10	-	10	32	E290A797	-
1/2	15	4.1	68	X (*)	10	0	10	-	10	32	E290A798	-
1/2	15	4.9	82	V (*)	10	0	10	-	10	50	E290A399	VI
1/2	15	4.9	82	VI (*)	10	0	10	-	10	63	E290B079	-
3/4	20	6.5	108	X (*)	10	0	10	-	10	32	E290A799	-
3/4	20	9.4	157	V (*)	10	0	10	-	10	50	E290A400	VI
3/4	20	9.4	157	VI (*)	10	0	10	-	10	63	E290B080	-
1	25	12.8	213	V (*)	10	0	10	-	10	50	E290A401	VI
1	25	16.5	275	VI (*)	10	0	10	-	10	63	E290B081	-
1 1/4	32	27	450	VI (*)	10	0	10	-	10	63	E290A082	-
1 1/4	32	27	450	VII (*)	10	0	10	-	10	90	E290A137	-
1 1/2	40	45	750	VI (*)	10	0	10	-	10	63	E290A083	-
1 1/2	40	45	750	VII (*)	10	0	10	-	10	90	E290A084	-
2	50	59	983	VI (*)	10	0	9	-	9	63	E290A085	-
2	50	59	983	VII (*)	10	0	10	-	10	90	E290A086	-
2 1/2	65	94	1567	VII (*)	10	0	10	-	10	90	E290A625	-

Express delivery

ANGLE SEATED VALVES

CLAMP or Butt Welding connection
stainless steel body
DN 10 to 65



2/2
Series
S290

FEATURES

- Valve with clamp type connection to ISO 2852 for quick disconnection, a system commonly used in the food processing industry or with butt welding connection to ISO 6761 for stainless steel pipe to ISO 1127
- CLAMP valve body pickled in nitric/fluoric acid bath (NET-INOX passivation treatment)
- High flow due to angled seat design
- Anti-waterhammer design (fluid entry under the disc)
- Vacuum operation up to 10-2 mbar
- Wide range of piston-type operators (32 - 50- 63 - 90 -125 mm dia.) rotatable through 360°, for maximum performance at different minimum pilot pressures
- High performance, maintenance-free stuffing box
- The valves satisfy Pressure Equipment Directive 97/23/EC, category 1 (DN > 25) or article 3.3 (DN ≤ 25)



SPECIFICATIONS

DN	O.D. of Stub (clamp)	O.D. of Stub (butt)	Flow Coefficient Kv		Pilot Pressure (bar)		Operating Pressure Differential (bar)			Operator Diameter (mm)	Catalog Number		Suffix	
							Min.	Max.			Clamp Connection ⁽¹⁾	Butt Welding Connection		
								Air, Inert Gas, Aggressive Fluids	Water, Oil, Liquids, Aggressive Liquids					Steam (≤184°C)
NC - Normally closed, entry under the disc														
10	34	17.2	2.8	47	4	10	0	16	16	10	32	XS290A800	S290A802	-
15	34	21.3	4.1	68	4	10	0	12	12	10	32	XS290A804	S290A806	-
15	34	21.3	4.9	82	4	10	0	16	16	10	50	XS290A408	S290A417	VI
15	34	21.3	4.9	82	2.5	10	0	16	16	10	63	XS290B137	S290B205	PD
20	50.5	26.9	6.5	108	4	10	0	6	6	6	32	XS290A808	S290A810	-
20	50.5	26.9	9.4	157	4	10	0	10	10	10	50	XS290A409	S290A418	-
20	50.5	26.9	9.4	157	4	10	0	16	16	10	63	XS290B140	S290B208	-
20	50.5	26.9	9.4	157	2.5	10	0	12	12	10	63	XS290B139	S290B207	-
25	50.5	33.7	12.8	213	4	10	0	6	6	6	50	XS290A410	S290A419	VI
25	50.5	33.7	16.5	275	4	10	0	10	10	10	63	XS290B145	S290B211	PD
25	50.5	33.7	16.5	275	4	10	0	16	16	10	90	XS290B146	S290B212	PD
25	50.5	33.7	16.5	275	2.5	10	0	6	6	6	63	XS290B143	S290B210	-
25	50.5	33.7	16.5	275	2.5	10	0	12	12	10	90	XS290B144	-	-
32	64	42.4	27	450	4	10	0	6	6	6	63	XS290A151	S290A215	-
32	64	42.4	27	450	4	10	0	12	12	10	90	-	S290A216	-
32	64	42.4	27	450	2.5	10	0	3	3	3	63	-	S290A214	-
40	64	48.3	45	750	4	10	0	4	4	4	63	XS290A155	S290A217	-
40	64	48.3	45	750	4	10	0	8	8	8	90	XS290A156	S290A218	-
40	64	48.3	45	750	2.5	10	0	4	4	4	90	XS290A154	-	-
50	77.5	60.3	59	983	4	10	0	2.5	2.5	2.5	63	XS290A687	S290A719	-
50	77.5	60.3	59	983	4	10	0	6	6	6	90	XS290A688	S290A720	PD
50	77.5	60.3	59	983	2.5	10	0	2.5	2.5	2.5	90	XS290A685	-	-
65	91	76.1	94	1567	4	10	0	2	2	2	90	XS290A691	S290A722	-
NO - Normally open, entry under the disc														
10	34	17.2	2.8	47	IX (*)	10	0	16	16	10	32	XS290A812	S290A814	-
15	34	21.3	4.1	68	IX (*)	10	0	16	16	10	32	XS290A816	S290A818	-
15	34	21.3	4.9	82	I (*)	10	0	16	16	10	50	XS290A411	S290A420	-
15	34	21.3	4.9	82	II (*)	10	0	16	16	10	63	XS290B161	S290B221	-
20	50.5	26.9	6.5	108	IX (*)	10	0	16	16	10	32	XS290A820	S290A822	-
20	50.5	26.9	9.4	157	I (*)	10	0	16	16	10	50	XS290A412	S290A421	-
20	50.5	26.9	9.4	157	II (*)	10	0	16	16	10	63	XS290B162	S290B222	-
25	50.5	33.7	12.8	213	I (*)	10	0	16	16	10	50	XS290A413	S290A422	-
25	50.5	33.7	16.5	275	II (*)	10	0	16	16	10	63	XS290B163	S290B223	-
32	64	42.4	27	450	II (*)	10	0	16	16	10	63	XS290A164	S290A224	-
40	64	48.3	45	750	II (*)	10	0	11	11	10	63	XS290A165	S290A225	-
50	77.5	60.3	59	983	II (*)	10	0	7	7	7	63	XS290A693	S290A724	-
50	77.5	60.3	59	983	III (*)	10	0	13	13	10	90	XS290A694	S290A725	-
65	91	76.1	94	1567	III (*)	10	0	7	7	7	90	XS290A695	S290A726	-

Express delivery

(1) SS clamp connection without NET-INOX treatment with TPL 24045

SPECIFICATIONS

DN	O.D. of Stub (clamp)	O.D. of Stub (butt)	Flow Coefficient Kv		Pilot Pressure (bar)		Operating Pressure Differential (bar)			Operator Diameter	Catalog Number		Suffix	
							Min.	Max.			Clamp Connection ⁽¹⁾	Butt Welding Connection		
								Air, Inert Gas, Aggressive Fluids	Water, Oil, Liquids, Aggressive Liquids					Steam (≤184°C)
(mm)	(mm)	(m ³ /h)	(l/min)	Min.	Max.				(mm)					
NC - Normally closed, entry above the disc (version recommended for rapid-cycling steam applications)														
10	34	17.2	2.8	47	X (*)	10	0	10	-	10	32	XS290A824	S290A826	-
15	34	21.3	4.1	68	X (*)	10	0	10	-	10	32	XS290A828	S290A830	-
15	34	21.3	4.9	82	V (*)	10	0	10	-	10	50	XS290A414	S290A423	-
15	34	21.3	4.9	82	VI (*)	10	0	10	-	10	63	XS290B167	S290B227	-
20	50.5	26.9	6.5	108	X (*)	10	0	10	-	10	32	XS290A832	S290A834	-
20	50.5	26.9	9.4	157	V (*)	10	0	10	-	10	50	XS290A415	S290A424	-
20	50.5	26.9	9.4	157	VI (*)	10	0	10	-	10	63	XS290B168	S290B228	-
25	50.5	33.7	12.8	213	V (*)	10	0	10	-	10	50	XS290A416	S290A425	-
25	50.5	33.7	16.5	275	VI (*)	10	0	10	-	10	63	XS290B169	S290B229	-
32	64	42.4	27	450	VI (*)	10	0	10	-	10	63	XS290A170	S290A230	-
40	64	48.3	45	750	VI (*)	10	0	10	-	10	63	XS290A171	S290A231	-
40	64	48.3	45	750	VII (*)	10	0	10	-	10	90	-	S290A259	-
50	77.5	60.3	59	983	VI (*)	10	0	9	-	9	63	XS290A697	S290A728	-
50	77.5	60.3	59	983	VII (*)	10	0	10	-	10	90	XS290A698	S290A729	-
65	91	76.1	94	1567	VII (*)	10	0	10	-	10	90	XS290A699	S290A730	-

Express delivery

(1) SS clamp connection without NET-INOX treatment with TPL 24045

FEATURES

- Precise, quick-acting and robust valve suitable for use in outdoor industrial environments
- Exceptional long service life
- Variable flow proportional to the control signal
- Real-time control
- Ready-to-use valve
- The positioner can be directly connected to an external sensor (double loop control)
- Power saving function and no air consumption when position is reached
- Manual valve operator
- LED indicators for valve status display
- External exhausting



POSITIONER D CONTROLLER SPECIFICATIONS (NC valves, fluid entry under the disc)

Analog Setpoint	Suffix for Proportional Valve and Positioner ⁽¹⁾ Delivered Assembled			
	Fail Position Maintained ⁽²⁾		Fail Close ⁽³⁾	
	2 Way			
	Cable Gland	M12	Cable Gland	M12
Positioner^D, Single Loop				
0 - 10 V DC	PDB76	PDB82	PDB78	PDB84
4 - 20 mA	PDB77	PDB83	PDB79	PDB85
Positioner^D, Double Loop				
0 - 10 V DC	-	-	PDB80	PDB86
4 - 20 mA	-	-	PDB81	PDB87

■ Express delivery

(1) Place the indicated suffix after the catalog number of the valve selected

(2) Fail position of the valve disc maintained on loss of power

(3) Fail Close: Valve returns to closed position on loss of power

VALVE SPECIFICATIONS

Threaded E290

Pipe Size		Flow Coefficient Kv		Pilot Pressure (bar)		Operating Pressure Differential (bar)				Operator Diameter (mm)	Catalog Number
						Min.	Max.				
(G*)	DN	(m ³ /h)	(l/min)	Min.	Max.		Air, Inert Gas, Aggressive Fluids	Water, Oil, Liquids, Aggressive Liquids	Steam (≤184°C)		Stainless Steel
NC - Normally closed, entry under the disc											
1/2	15	4.6	77	2.5	8	0	16	16	10	63	E290B045PD
3/4	20	7.1	118	4.5	8	0	16	16	10	63	E290B048PD
1	25	15	250	4.5	8	0	10	10	10	63	E290B053PD
1	25	15	250	4.5	8	0	16	16	10	90	E290B054PD
1 1/4	32	21	350	4.5	8	0	6	6	6	63	E290A059PD
1 1/4	32	21	350	4.5	8	0	12	12	10	90	E290A060PD
1 1/2	40	29	483	4.5	8	0	4	4	4	63	E290A063PD
1 1/2	40	29	483	4.5	8	0	8	8	8	90	E290A064PD
2	50	40	667	4.5	8	0	2.5	2.5	2.5	63	E290A067PD
2	50	40	667	4.5	8	0	6	6	6	90	E290A068PD
2 1/2	65	68	1133	4.5	8	0	2	2	2	90	E290A500PD

■ Express delivery

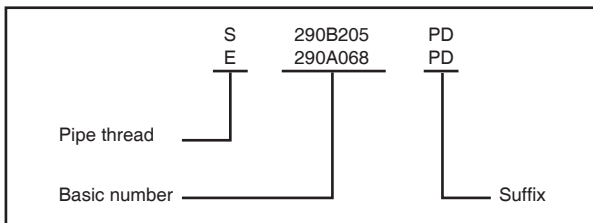
VALVE SPECIFICATIONS
Butt Weld & Tri Clamp S290

Pipe Size		Flow Coefficient Kv		Pilot Pressure (bar)		Operating Pressure Differential (bar)				Operator Diameter	Catalog Number	
						Min.	Max.				(mm)	Stainless Steel Clamp Connection ⁽⁴⁾
(G°)	DN	(m³/h)	(l/min)	Min.	Max.		Air, Inert Gas, Aggressive Fluids	Water, Oil, Liquids, Aggressive Liquids	Steam (≤184°C)			
NC - Normally closed, entry under the disc												
1/2	15	4.6	77	2.5	8	0	16	16	10	63	XS290B137PD	S290B205PD
3/4	20	7.1	118	4.5	8	0	16	16	10	63	XS290B140PD	S290B208PD
1	25	15	250	4.5	8	0	10	10	10	63	XS290B145PD	S290B211PD
1	25	15	250	4.5	8	0	16	16	10	90	XS290B146PD	S290B212PD
1 1/4	32	21	350	4.5	8	0	6	6	6	63	XS290A151PD	S290A215PD
1 1/4	32	21	350	4.5	8	0	12	12	10	90	-	S290A216PD
1 1/2	40	29	483	4.5	8	0	4	4	4	63	XS290A155PD	S290A217PD
1 1/2	40	29	483	4.5	8	0	8	8	8	90	XS290A156PD	S290A218PD
2	50	40	667	4.5	8	0	2.5	2.5	2.5	63	XS290A687PD	S290A719PD
2	50	40	667	4.5	8	0	6	6	6	90	XS290A688PD	S290A720PD
2 1/2	65	68	1133	4.5	8	0	2	2	2	90	XS290A691PD	S290A722PD

Express delivery

(4) SS clamp connection without NET-INOX treatment with TPL 24045

ORDERING EXAMPLES



FEATURES

- CNOMO pad-mount version for valve piloting applications
- Compact size and low weight for easy installation on single or joinable subbases
- AC/DC interchangeability of the solenoid operator without any need for disassembly of the valve
- Flexible installation on joinable subbases
- Manual operator as standard
- The solenoid valves satisfy all relevant EC directives



STANDARD VOLTAGES

DC (=) : 12V - 24V - 48V

AC (~) : 24V - 230V / 50 - 60 Hz

SPECIFICATIONS

Pipe Size	Orifice Size		Flow at 6 bar l/min (ANR)		Flow Coefficient Kv		Operating Pressure Differential (bar)			Power Coil (W)		Catalog Number	
	1→2	2→3	1→2	2→3	1→2	2→3	Min.	Max. (PS)		~	=	with Connector	without Connector
	(mm)	(mm)			(l/min)	(l/min)		Air					
NC - Normally closed													
pad mounting	1.2	1.5	50	56	0.7	0.8	0	10	10	2.5	3	X18900001 TPL 24065	X18900002 TPL 24065

FEATURES

- Size 30 CNOMO pilot adapted for the piloting of actuators or spool valves
- Version with M12 connection, integrated Led and protection
- Manual operator as standard

STANDARD VOLTAGES

DC (=) : 24V



SPECIFICATIONS

Orifice Size (mm)	Flow				Allowable Differential Pressure (bar)		Catalog Number
	at 6 bar l/min (ANR)		Coefficient Kv		Min.	Max.	
	1→2	2→3	1→2	2→3			with DIN Connector
1.6	70	84	1	1.2	0	10	19000006

SOLENOID VALVES

1.4 W low power
brass or stainless steel bodies
1/4

3/2
Series
314

FEATURES

- Molded one-piece solenoid with highly efficient solenoid cartridge and special low wattage coil
- Increased ambient temperature capabilities up to 175°F (80°C)
- Designed for use in automation of plant control systems to provide:
 - PLC compatibility
 - Reduced battery drain
 - Reduced heat rise
 - Reduced wiring cost
- Air or inert gas only



STANDARD VOLTAGES

DC (⇒) : 24V

SPECIFICATIONS

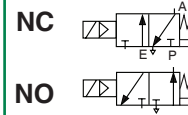
Pipe Size (in)	Orifice Size (mm)	Kv Flow Factor (m ³ /h)		Operating Pressure Differential (bar)		Max. Fluid and Ambient Temp. °C	Prefix				Catalog Number	
				Air-Inert Gas			VC	EF/VCEF ⁽¹⁾	JPIS/JSIS	Red Hat II NEMA 4	Brass	Stainless Steel
		Pressure to Cylinder	Cylinder to Exhaust	Min.	Max.							
3/2 Valves, Universal operation (Normally closed or Normally open) with NBR disc - SIL 3 capable, Certified by Exida												
1/4	2	0.07	0.07	0	10	60	•	•	-	•	8314G300	8314G301
1/4	2	0.07	0.07	0	10	60	-	-	•	-	8314B300	8314B301

• Available Express

(1) VCEF can be mounted in 4 directions & 3 conduit sizes

SOLENOID VALVES

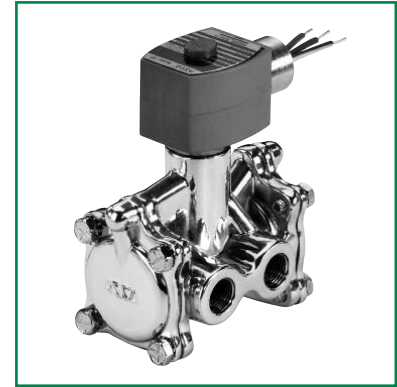
air and water, high flow
brass body
1/2 - 3/4



3/2
Series
316

FEATURES

- Diaphragm poppet valves suitable for controlling air, inert gas, and liquids
- Internal piloting controls large orifices to provide high flows
- Can be used to pilot large actuators to provide quick closing of large control valves
- Resilient seating for tight shutoff
- Mountable in any position



STANDARD VOLTAGES

DC (=) : 24V

AC (-) : 110V - 120V - 220V - 240V / 50 - 60 Hz

SPECIFICATIONS

Pipe Size (in)	Orifice Size (mm)	Kv Flow Factor (m ³ /h)	Operating Pressure Differential (bar)				Max. Fluid Temp. °C		Prefix					Catalog Number	
			Min.	Max. AC		Max. DC		AC	DC	VC	EF/VCEF ⁽¹⁾	HT	JKF	Red Hat II NEMA 4	Brass
				Air-Inert Gas	Water	Air-Inert Gas	Water								
NC - Normally Closed (Closed when de-energized)															
1/2	16	2.7	0.7	10	9	9	9	82	49	•	•	•	•	•	8316G064
3/4	17	4.1	0.7	10	9	9	9	82	49	•	•	•	-	•	8316G074

• Available Express

(1) VCEF can be mounted in 4 directions & 3 conduit sizes

FEATURES

- Floating diaphragm pilot valves suitable for controlling air, inert gas, and liquids
- High flows to pilot and provide quick closing for large single actuators
- Can be internally or externally piloted to convert valves to zero minimum pressure differential operation
- Resilient seating for tight shutoff
- Mountable in any position



STANDARD VOLTAGES

DC (=) : 24V

SPECIFICATIONS

Pipe Size (in)	Orifice Size (mm)	Kv Flow Factor (m ³ /h)		Operating Pressure Differential (bar)		Prefix							Catalog Number	Suffix
				Inert Gas		VC	EF/VCEF ⁽²⁾	EV/VCEV ⁽³⁾	NF/WSNF	JPIS/JSIS	Red Hat II NEMA 4	Stainless Steel		
		Pressure to Cylinder	Cylinder to Exhaust	Min.	Max.									
3/2 VALVES, NORMALLY CLOSED (Closed when de-energized) with FPM Disc														
1/4	8	1.3	1.3	(1)	9	-	-	-	-	•	-	-	8316B381V	MB
1/4	8	1.29	1.29	(1)	10	•	•	•	-	-	•	-	8316G381V	MB
1/4	8	1.3	1.3	(1)	10	-	-	-	•	-	-	-	B316A381V	MB
1/2	16	3.5	3.5	(1)	9	-	-	-	-	•	-	-	8316B384V	MB
1/2	16	3.43	3.43	(1)	10	-	•	•	-	-	•	-	8316G384V	MB
1/2	16	3.4	3.4	(1)	10	-	-	-	•	-	-	-	B316A384V	MB
1/2	16	3.4	3.4	(1)	8	-	-	-	•	-	-	-	B316A084V	-

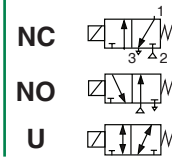
• Available Express

(1) Zero minimum when valve selection gasket is in external position and proper auxiliary air pressure is applied.

Minimum 1.0 bar Operating Pressure Differential when selection gasket is in the internal position.

(2) VCEF can be mounted in 4 directions & 3 conduit sizes

(3) VCEV can be mounted in 4 directions & 3 conduit sizes



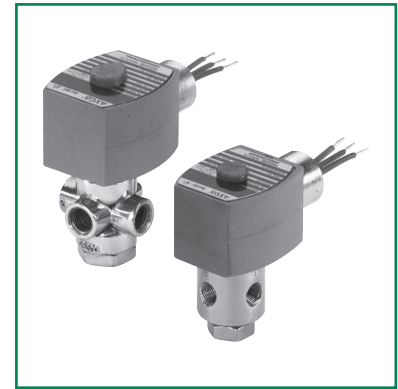
FEATURES

- All NPT connections are in the valve body to allow in-line piping
- No Minimum Operating Pressure Differential required
- Broadest range of applications
- Mountable in any position

STANDARD VOLTAGES

DC (=) : 24V

AC (-) : 110V - 120V - 208V - 220V- 230V - 240V / 50 - 60 Hz



SPECIFICATIONS

Pipe Size (in)	Orifice Size (mm)	Kv Flow Factor (m³/h)	Operating Pressure Differential (bar)						Prefix									Catalog Number		Option		
			Max. AC			Max. DC			SC	VC	EF/VCEF ⁽³⁾	EV/VCEV ⁽⁴⁾	HB	HT	JKF	JKH	Red Hat II NEMA 4	Brass	Stainless Steel			
			Air-Inert Gas	Water	Lt. Oil @ 300 SSU	Air-Inert Gas	Water	Lt. Oil @ 300 SSU														
U - Universal																						
1/4	1.6	0.08	9	9	9	5	5	5	●	-	-	-	-	-	-	-	-	-	B320A172	-	MO	
1/4	1.6	0.08	9	9	9	5	5	5	-	●	●	-	-	-	●	●	●	●	8320G172	-	MO	
1/4	2.4	0.1	7	7	7	4	4	4	●	●	●	-	● ⁽²⁾	● ⁽¹⁾	● ⁽¹⁾	● ⁽¹⁾	● ⁽¹⁾	●	8320G174	-	MO	
1/4	3.2	0.21	3	3	3	2	2	2	-	-	●	-	● ⁽²⁾	● ⁽¹⁾	-	-	-	●	8320G176	-	MO	
1/4	4.4	0.3	1.5	1.5	1.5	0.8	0.8	0.8	●	-	-	-	-	-	-	-	-	-	B320A178	-	MO	
1/4	4.4	0.3	1	1	1	1	1	1	●	-	●	-	-	●	-	●	●	●	8320G178	-	MO	
1/4	2.4	0.1	7	7	7	4	4	4	-	●	●	●	●	● ⁽²⁾	● ⁽¹⁾	● ⁽¹⁾	● ⁽¹⁾	●	-	8320G200	-	
NC - Normally closed																						
1/4	1.6	0.08	14	15	15	11	11	11	●	●	●	-	● ⁽²⁾	● ⁽¹⁾	● ⁽¹⁾	● ⁽¹⁾	● ⁽¹⁾	●	8320G182	-	MO	
1/4	2.4	0.1	10	10	10	8	8	8	●	-	-	-	-	-	-	-	-	-	B320A184	-	MO	
1/4	2.4	0.1	10	10	10	8	8	8	●	●	●	-	-	●	●	●	●	●	8320G184	-	MO MS	
1/4	3.2	0.21	6	6	6	4	4	4	●	-	-	-	-	-	-	-	-	-	B320A186	-	MO	
1/4	3.2	0.21	6	6	6	4	4	4	●	●	●	-	-	●	●	●	●	●	8320G186	-	MO	
1/4	4.4	0.3	3	3	3	2	2	2	-	-	●	-	-	●	-	-	-	-	8320G188	-	MO	
1/4	2.4	0.1	10	10	10	8	8	8	●	-	-	-	-	-	-	-	-	-	-	B320A202	-	
1/4	2.4	0.1	10	10	10	8	8	8	-	●	●	●	●	●	●	●	●	●	-	8320G202	-	
NO - Normally open																						
1/4	1.6	0.08	16	17	17	11	11	11	-	-	●	-	● ⁽²⁾	● ⁽¹⁾	-	-	-	●	8320G192	-	MO	
1/4	2.4	0.1	10	10	10	7	7	7	●	-	-	-	-	-	-	-	-	-	B320A194	-	MO	
1/4	2.4	0.1	10	10	10	7	7	7	-	●	●	-	-	●	●	-	-	●	8320G194	-	MO	
1/4	3.2	0.21	5	5	5	4	4	4	-	-	●	-	-	●	-	-	-	●	8320G196	-	MO	
1/4	4.4	0.3	3	3	3	2	2	2	-	-	●	-	-	●	-	-	-	●	8320G198	-	MO	

● Available Express

(1) DC only

(2) AC only

(3) VCEF can be mounted in 4 directions & 3 conduit sizes

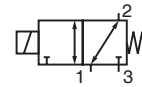
(4) VCEV can be mounted in 4 directions & 3 conduit sizes

SOLENOID VALVES

direct operated, reduce & low power
brass or stainless steel bodies

1/4

U



3/2
Series
327



FEATURES

- The valves are certified according to IEC 61508 Functional Safety data and have SIL-3 capability (TÜV & Exida certification)
- The solenoid valves are recommended for pilot applications with basic flow, wide pressure ranges and no minimum operating pressure
- PTFE rider rings and graphite-filled PTFE seals reduce friction and eliminate sticking
- Coils used in metal enclosures have class H insulation materials
- Dedicated execution for low power
- Dedicated execution for extreme low ambient temperatures
- Peak voltage suppression diodes are standard in DC solenoids with metal enclosures
- The solenoid valves satisfy all relevant EC Directives
- Manual Operators are optional including an under pressure removable type
- Environmental NACE compliant and certified vibration resistant in combination with WSCR solenoids

STANDARD VOLTAGES

DC (=) : 24V - 48V - 110V - 120V

AC (-) : 110V - 115V - 120V - 200V - 220V - 230V / 50 - 60 Hz

SPECIFICATIONS

Pipe Size	Orifice Size	Flow Coefficient Kv		Operating Pressure Differential (bar)		Prefix											Catalog Number		Suffix	
						Max. (PS)	Min. Air/Water	SC	VC	EF/VCEF ⁽²⁾	EV/VCEV ⁽³⁾	NF/WSNF	NFET/WSNFET	HT	JKF	JKH	Red Hat II NEMA 4	Brass		Stainless Steel
(mm)	(m ³ /h)	(l/m)																		
U - Universal, FPM sealings and poppets																				
1/4	5.7	0.45	7.5	0	10	●	-	-	-	●	●	-	-	-	-	8327B001	8327B002	-		
1/4	5.7	0.45	7.5	0	10	●	-	-	-	●	●	-	-	-	-	-	8327B202	MO		
1/4	5.7	0.45	7.5	0	10	●	-	-	-	●	●	-	-	-	-	-	8327B102	MO		
1/4	5.7	0.45	7.5	0	10	-	-	-	-	● ⁽¹⁾	●	-	-	-	-	-	8327B302	-		
U - Universal, VMQ sealings and poppets																				
1/4	5.7	0.45	7.5	0	10	●	-	-	-	●	-	-	-	-	-	-	8327B012	-		
U - Universal, (F)VMQ sealings and poppets																				
1/4	5.7	0.45	7.5	0	10	●	-	-	-	●	●	-	-	-	-	-	8327B212	MO		
1/4	5.7	0.45	7.5	0	10	●	-	-	-	●	●	-	-	-	-	-	8327B112	MS		
1/4	5.7	0.45	7.5	0	10	-	-	-	-	● ⁽¹⁾	● ⁽¹⁾	-	-	-	-	-	8327B312	MO		
1/4	5.7	0.45	7.5	0	10	-	-	-	-	-	-	-	-	-	-	-	8327B012	MS		
U - Universal, Pressure at any port																				
1/4	6	0.42	7	-	10	●	●	●	-	-	-	● ⁽¹⁾	●	●	●	8327G041	-	-		
1/4	6	0.42	7	-	10	●	●	●	●	-	-	● ⁽¹⁾	●	●	●	-	8327G042	-		
U - Universal - Low temperature, Pressure at any port																				
1/4	6	0.42	7	-	10	-	● ⁽¹⁾	●	●	-	-	-	-	-	●	-	8327G052	-		

● Available Express

(1) DC only

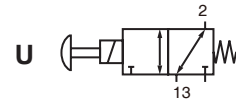
(2) VCEF can be mounted in 4 directions & 3 conduit sizes

(3) VCEV can be mounted in 4 directions & 3 conduit sizes

SOLENOID VALVES

no voltage release (tamperproof)
manual reset construction

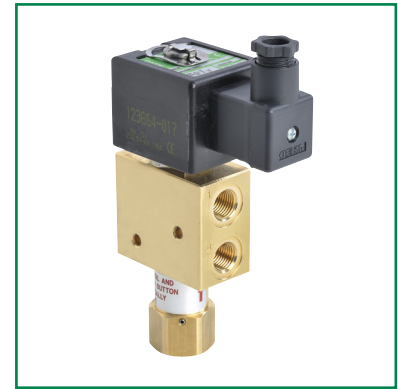
1/4



3/2
Series
327

FEATURES

- The valves are certified according to IEC 61508 Functional Safety data and have SIL-3 capability (Exida approval)
- Compact Tamperproof/Manual Reset function which means that the valve has to be energized as well as manually operated before it stays in the "latched" position. Because of the tamperproof feature there will be no flow from port 3 to port 2 if only the push button is pressed. The No Voltage Release (NVR) function will make sure that the valve trips when de-energized
- The solenoid valves are recommended for pilot applications with basic flow, wide pressure ranges and no minimum operating pressure
- PTFE rider rings and graphite-filled PTFE seals reduce friction and eliminate sticking
- Coils used in metal enclosures have class H insulation materials
- Peak voltage suppression diodes are standard in DC solenoids with metal enclosures
- The solenoid valves satisfy all relevant EC Directives



STANDARD VOLTAGES

DC (=) : 24V

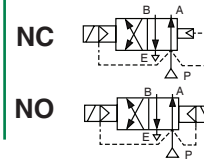
SPECIFICATIONS

Pipe Size	Orifice Size	Flow Coefficient Kv		Operating Pressure Differential (bar)		Prefix			Catalog Number	Suffix
				Min.	Max. (PS)					
					Air/Water	~/=	NF/WSNF	NFET/WSNFET	Red Hat II NEMA 4	Stainless Steel
(mm)	(m ³ /h)	(l/m)								
U - Universal, FPM sealings and poppets										
1/4	5.7	0.55	9.2	0	10	•	•	-	8327B122	-

- Available Express

SOLENOID VALVES

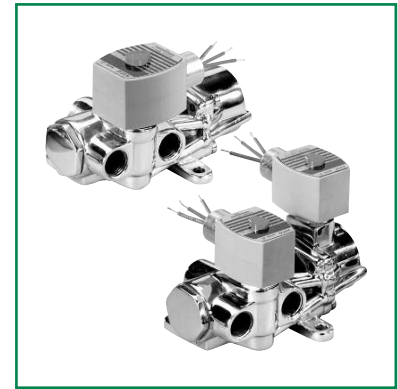
piston / poppet
brass body
1/2



3/2
Series
344

FEATURES

- *Sturdy, robust construction*
- *Piston-operated poppet design provides high flow*
- *For use with air or water*
- *Wide range of sizes and flow rates*
- *Single or dual solenoid constructions*
- *Dual solenoid can be shifted with a momentary signal and remain in position even if electrical power is lost*
- *Mountable in any position*



STANDARD VOLTAGES

AC (-) : 110V - 120V - 220V - 240V / 50 - 60 Hz

SPECIFICATIONS

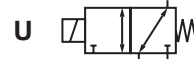
Pipe Size (in)	Orifice Size (mm)	Kv Flow Factor (m ³ /h)		Operating Pressure Differential (bar)									Max. Fluid Temp. °C		Prefix					Catalog Number
				Max. AC			Max. DC			VC	EF/VCEF ⁽¹⁾	HT			JKF	Red Hat II NEMA 4				
				Press.	Exh.	Min.	Air-Inert Gas	Water	Light Oil @ 300 SSU								Air-Inert Gas	Water	Light Oil @ 300 SSU	
Single solenoid																				
1/2	10	1.2	1.89	0.7	10	9	9	9	9	9	82	65	•	•	•	•	•	8344G074		

• Available Express

(1) VCEF can be mounted in 4 directions & 3 conduit sizes

PINCH SOLENOID VALVE

pinch mechanism
for flexible tube
O.D. 3.2 mm



3/2
Series
384

FEATURES

- Solenoid valve suitable for cutting off the flow of a fluid by pinch
- For sterile, aseptic, physiological and food applications
- No turbulence or gap when cutting off flow by pinch
- Silent operation
- Full bore output flow compared with a traditional solenoid valve
- Manual pulse control for fitting tube
- A single component in contact with the fluid, i.e. the tube
- Bi-directional flow
- The tubings are included in our supply, 30cm length
- The solenoid valves satisfy all relevant EC directives



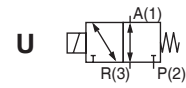
STANDARD VOLTAGES

DC (=) : 12V - 24V

SPECIFICATIONS

Tube I.D.	Tube O.D.	Pinch Force	Operating Pressure Differential (bar)			Power Coil (W)		Catalog Number
			Min.	Max. (PS)		~	=	
(mm)	(mm)	(daN)		Air Inert Gas (*)	Liquids (*)			=
1.6	3.2	0.22	0	1.5	1.5	-	3.5	P384A024LCA00V1
								P384A024LCA00V3
								P384A025LCA00V1 ⁽¹⁾
								P384A025LCA00V3 ⁽¹⁾

(1) The flange is rotatable with 90°



FEATURES

- Valves for invitro diagnostics in biochemistry, hematology and immunology
- Can be used to control acids and bases, as well as analytical reagents
- The valves have easy-to-flush internal cavities and are ideal for controlling aggressive fluids or when high purity is demanded
- Very low internal volume
- Hermetic separation of control mechanism and fluid
- Reduced heat exchange between coil and fluid
- The use of first class materials and thorough valve testing ensure high reliability and a lifetime of at least 1 million cycles
- Suitable for vacuum applications



STANDARD VOLTAGES

DC (=) : 12V - 24V

SPECIFICATIONS

Pipe Size	Orifice Size (mm)	Flow Coefficient Kv (m ³ /h) (l/min)		Operating Pressure Differential (bar)			Power Coil (W)		Prefix	Catalog Number
				Min.	Max. (PS)		~	=		
					Gases	Liquids				
U - Universal, PA body, EPDM seals										
pad mount	1.5	0.03	0.5	0	2	2	-	4	•	S385A002E

- Available Express

GENERAL ISOLATION VALVE

2 and 3 Way rocker isolation valve
threaded barbed hose bib porting

2NC

3U

2/2
3/2
Series
458

FEATURES

ASCO Scientific's patented Series 458 rock isolation valves feature a unique rocker diaphragm mechanism that shields the internal components of the solenoid from the fluid. The design forms an easy to flush, low volume internal cavity.

- Suitable for corrosive media that would attack valves designed for general service duty
- Prevents contamination of fluid sample, due to excellent flushing characteristics
- Rocker design significantly reduces erratic flow caused by pumping action in poppet style valves
- Standard built-in manual operator for testing or troubleshooting
- An air operated version is also available. In this version an air cylinder replaces the solenoid as the valve actuator
- Meets applicable CE directives



STANDARD VOLTAGES

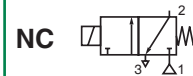
DC (=) : 12V

SPECIFICATIONS

Ports	Orifice Size (mm)	Kv Flow Factor	Flange Material	Mount	Maximum Pressure (bar)	Watt Rating @ 20°C	Weight (kg)	Catalog Number
2-Way normally closed (Closed when de-energized)								
Barbed Hose Bib	1.6	0.03	PSU	Panel	2.4	2.5	0.06	X458517084001V3
3-Way universal operation (Pressure at any port)								
Barbed Hose Bib	1.6	0.03	PSU	Panel	2.4	2.5	0.06	X458517085001V3

SOLENOID VALVES

direct operated
multiple manifold sub-bases
G 1/8



3/2
Series

HV293734

FEATURES

- Compact size and easy assembly
- Suitable for mixing or distributing function; suitable for piston valve piloting function
- AC/DC interchangeability of the solenoid without disassembling the valve
- Quick disassembly of core tube for easy maintenance of internal parts

STANDARD VOLTAGES

DC (=) : 24V

AC (-) : 230V / 50 Hz



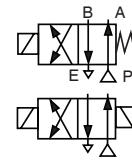
SPECIFICATIONS

Pipe Size	Orifice Size	Flow Coefficient Kv		Operating Pressure Differential (bar)				Power Coil (w)		Catalog Number	
				Min.	Max. (PS)				AC		DC
					Air		Oil				
(mm)	(m ³ /h)	(l/min)	AC	DC	AC	DC	AC	DC			
NC - Normally closed											
1/8	1.5	0.06	1	0	8	8	8	8	•	•	HV293734-2-2
1/8	1.5	0.06	1	0	8	8	8	8	•	•	HV293734-2-3
1/8	1.5	0.06	1	0	8	8	8	8	•	•	HV293734-2-4
1/8	1.5	0.06	1	0	8	8	8	8	•	•	HV293734-2-5
1/8	1.5	0.06	1	0	8	8	8	8	•	•	HV293734-2-6
1/8	1.5	0.06	1	0	8	8	8	8	•	•	HV293734-2-7
1/8	1.5	0.06	1	0	8	8	8	8	•	•	HV293734-2-8
1/8	1.5	0.06	1	0	8	8	8	8	•	•	HV293734-2-9
1/8	1.5	0.06	1	0	8	8	8	8	•	•	HV293734-2-10

• Available Express

SOLENOID VALVES

direct operated
brass body
1/4



4/2
Series
342

FEATURES

- Direct acting operation and high flow construction
- Direct acting, high flow slide-style valve
- Optional flow control regulates cylinder speed independently, in either direction
- Mechanical detent on dual solenoids holds last position, even after loss of electric power, pneumatics or pressure
- No Minimum Operating Pressure Differential required to shift valve
- Dual solenoid operation: solenoid may be energized momentarily (1/10 second) or continuously
- Mountable in any position



STANDARD VOLTAGES

AC (-) : 220V / 50 Hz

SPECIFICATIONS

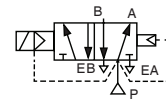
Pipe Size (in)	Orifice Size (mm)	Kv Flow Factor (m ³ /h)	Operating Pressure Differential (bar)			Max. Fluid Temp. °C	Prefix		Catalog Number
			Max. AC				EF/VCEF ⁽¹⁾	Red Hat II NEMA 4	
			Air-Inert Gas	Water	Lt. Oil @ 300 SSU	AC			Brass
Single solenoid construction									
1/4	4.8	0.6	9	7	7	71	•	•	8342G001

• Available Express

(1) VCEF can be mounted in 4 directions & 3 conduit sizes

SOLENOID VALVES

general service
brass body
1/4



4/2
Series
345

FEATURES

- Compact valves for general service applications
- Low-cost, 4-way valve when low flow is sufficient
- Mountable in any position

STANDARD VOLTAGES

AC (-) : 110V - 120V - 220V - 240V / 50 - 60 Hz



SPECIFICATIONS

Pipe Size (in)	Orifice Size (mm)		Kv Flow Factor (m ³ /h)		Operating Pressure Differential (bar)						Max. Fluid Temp. °C		Prefix			Catalog Number	
					Max. AC			Max. DC					EF/VCEF ⁽¹⁾	HT	Red Hat II NEMA 4		
	Press.	Exh.	Inlet	Exh.	Min.	Air-Inert Gas	Water	Lt. Oil @ 50 SSU	Air-Inert Gas	Water	Lt. Oil @ 50 SSU	AC				DC	Brass
Single solenoid																	
1/4	2	2	0.08	0.08	0.7	10	10	10	7	7	7	82	40	•	•	•	8345G001

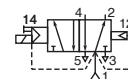
• Available Express

(1) VCEF can be mounted in 4 directions & 3 conduit sizes



MINI SPOOL VALVES

solenoid air operated
G1/4 tapped body
adaptable on joinable subbases



5/2
Series
521

STANDARD VOLTAGES

DC (=) : 24V

AC (-) : 230V / 50 Hz

SPECIFICATIONS

Operators	Response Time (ms)		Catalog Number
	Energized	De-energized	
Differential Return	20	30	52100001
Differential Return	20	30	52100004



FEATURES

- Compact size with high flow
- Environment protected construction to protect against the ingress of liquid, dust or any other foreign matter
- Multiple functions available with 5/2 Threaded and NAMUR options
- The same spool valve can be adapted for 3/2 #* or 5/2 functions for controlling double-acting and single-acting actuators
- 8-shaped seal technology - Small contact surface, low friction and minimize "sticking"
- Internal breathing feature where the return-spring chambers of the single-acting actuator "breathe" through the spool valve
- NAMUR design (LH Orientation & RH Orientation) ensures supply and exhaust ports of the solenoid valve are facing down to prevent water and debris ingress
- Robust and long lasting 316 Stainless Steel Manual Operator (flush locking override)
- Epoxy coil with excellent moisture and high ambient temperature resistance
- # For Threaded type, 5/2 can be converted to 3/2 NC or 3/2 NO by inserting plug on 5/2 body (plug not supplied)
- * For NAMUR type, 5/2 can be converted to 3/2 NC by rotating NAMUR plate



STANDARD VOLTAGES

DC (=) : 12V - 24V - 48V

AC (-) : 24V - 48V - 110V - 115V - 120V - 230V / 50 - 60 Hz

SPECIFICATIONS

Function	Construction	Symbols	Flow Coefficient Kv	
			(m ³ /h)	(l/min)
5/2 Way#	Single Solenoid, Spring Return		0.9	15
	Dual Solenoid		0.9	15
NAMUR 3/2 NC - 5/2*	LH Orientation (Single Solenoid, Spring Return)	 3/2 NC 5/2	0.8	13.3
	LH Orientation (Dual Solenoid)	 3/2 NC 5/2	0.8	13.3
	RH Orientation (Single Solenoid, Spring Return)	 3/2 NC 5/2	0.8	13.3
	RH Orientation (Dual Solenoid)	 3/2 NC 5/2	0.8	13.3

SPECIFICATIONS

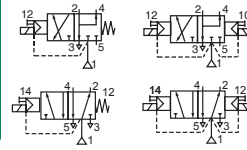
Port Type	Product Series	Valve Type	Solenoid Type	Function	Port Size	Electrical	Options	Catalog Number
ISO 228/1 "G" body connections	Process Valve	Rubber Packed	Solenoid Pilot	5/2 Threaded Spring Return	1/4"	without coil	No Option	G521A2B12PA00YY
ISO 228/1 "G" body connections	Process Valve	Rubber Packed	Solenoid Pilot	5/2 Threaded Spring Return	1/4"	Spade Plug Connection (IP65), with standard connector	No Option	G521A2B12SA00EW
ISO 228/1 "G" body connections	Process Valve	Rubber Packed	Solenoid Pilot	5/2 Threaded Spring Return	1/4"	Spade Plug Connection (IP65), with standard connector	No Option	G521A2B12SA00EY
ISO 228/1 "G" body connections	Process Valve	Rubber Packed	Solenoid Pilot	5/2 Threaded Spring Return	1/4"	Spade Plug Connection (IP65), with standard connector	No Option	G521A2B12SA00F1
ISO 228/1 "G" body connections	Process Valve	Rubber Packed	Solenoid Pilot	5/2 Threaded Spring Return	1/4"	Spade Plug Connection (IP65), with standard connector	No Option	G521A2B12SA00F3
ISO 228/1 "G" body connections	Process Valve	Rubber Packed	Solenoid Pilot	5/2 Threaded Spring Return	1/4"	Spade Plug Connection (IP65), with standard connector	No Option	G521A2B12SA00F9
ISO 228/1 "G" body connections	Process Valve	Rubber Packed	Solenoid Pilot	5/2 Threaded Spring Return	1/4"	Spade Plug Connection (IP65), with standard connector	No Option	G521A2B12SA00FH
ISO 228/1 "G" body connections	Process Valve	Rubber Packed	Solenoid Pilot	5/2 Threaded Spring Return	1/4"	Spade Plug Connection (IP65), with standard connector	No Option	G521A2B12SA00FQ
ISO 228/1 "G" body connections	Process Valve	Rubber Packed	Solenoid Pilot	5/2 Threaded Spring Return	1/4"	Spade Plug Connection (IP65), with standard connector	No Option	G521A2B12SA00FS
ISO 228/1 "G" body connections	Process Valve	Rubber Packed	Solenoid Pilot	5/2 Threaded Dual Solenoid	1/4"	without connector	No Option	G521A2B42PA00YY
ISO 228/1 "G" body connections	Process Valve	Rubber Packed	Solenoid Pilot	5/2 Threaded Dual Solenoid	1/4"	Spade Plug Connection (IP65), with standard connector	No Option	G521A2B42SA00EW
ISO 228/1 "G" body connections	Process Valve	Rubber Packed	Solenoid Pilot	5/2 Threaded Dual Solenoid	1/4"	Spade Plug Connection (IP65), with standard connector	No Option	G521A2B42SA00EY
ISO 228/1 "G" body connections	Process Valve	Rubber Packed	Solenoid Pilot	5/2 Threaded Dual Solenoid	1/4"	Spade Plug Connection (IP65), with standard connector	No Option	G521A2B42SA00F1
ISO 228/1 "G" body connections	Process Valve	Rubber Packed	Solenoid Pilot	5/2 Threaded Dual Solenoid	1/4"	Spade Plug Connection (IP65), with standard connector	No Option	G521A2B42SA00F3
ISO 228/1 "G" body connections	Process Valve	Rubber Packed	Solenoid Pilot	5/2 Threaded Dual Solenoid	1/4"	Spade Plug Connection (IP65), with standard connector	No Option	G521A2B42SA00F9
ISO 228/1 "G" body connections	Process Valve	Rubber Packed	Solenoid Pilot	5/2 Threaded Dual Solenoid	1/4"	Spade Plug Connection (IP65), with standard connector	No Option	G521A2B42SA00FH
ISO 228/1 "G" body connections	Process Valve	Rubber Packed	Solenoid Pilot	5/2 Threaded Dual Solenoid	1/4"	Spade Plug Connection (IP65), with standard connector	No Option	G521A2B42SA00FQ
ISO 228/1 "G" body connections	Process Valve	Rubber Packed	Solenoid Pilot	5/2 Threaded Dual Solenoid	1/4"	Spade Plug Connection (IP65), with standard connector	No Option	G521A2B42SA00FS
ISO 228/1 "G" body connections	Process Valve	Rubber Packed	Solenoid Pilot	5/2 Threaded or 3/2-5/2 NAMUR Spring Return	1/4"	Spade Plug Connection (IP65), with standard connector	Standard NAMUR (3/2 and 5/2) (LH Orientation with Standard TYPE 1 NAMUR)	G521A2B12S83MEW
ISO 228/1 "G" body connections	Process Valve	Rubber Packed	Solenoid Pilot	5/2 Threaded or 3/2-5/2 NAMUR Spring Return	1/4"	Spade Plug Connection (IP65), with standard connector	Standard NAMUR (3/2 and 5/2) (LH Orientation with Standard TYPE 1 NAMUR)	G521A2B12S83MEY

SPECIFICATIONS

Port Type	Product Series	Valve Type	Solenoid Type	Function	Port Size	Electrical	Options	Catalog Number
ISO 228/1 "G" body connections	Process Valve	Rubber Packed	Solenoid Pilot	5/2 Threaded or 3/2-5/2 NAMUR Spring Return	1/4"	Spade Plug Connection (IP65), with standard connector	Standard NAMUR (3/2 and 5/2) (LH Orientation with Standard TYPE 1 NAMUR)	G521A2B12S83MF1
ISO 228/1 "G" body connections	Process Valve	Rubber Packed	Solenoid Pilot	5/2 Threaded or 3/2-5/2 NAMUR Spring Return	1/4"	Spade Plug Connection (IP65), with standard connector	Standard NAMUR (3/2 and 5/2) (LH Orientation with Standard TYPE 1 NAMUR)	G521A2B12S83MF3
ISO 228/1 "G" body connections	Process Valve	Rubber Packed	Solenoid Pilot	5/2 Threaded or 3/2-5/2 NAMUR Spring Return	1/4"	Spade Plug Connection (IP65), with standard connector	Standard NAMUR (3/2 and 5/2) (LH Orientation with Standard TYPE 1 NAMUR)	G521A2B12S83MF9
ISO 228/1 "G" body connections	Process Valve	Rubber Packed	Solenoid Pilot	5/2 Threaded or 3/2-5/2 NAMUR Spring Return	1/4"	Spade Plug Connection (IP65), with standard connector	Standard NAMUR (3/2 and 5/2) (LH Orientation with Standard TYPE 1 NAMUR)	G521A2B12S83MFH
ISO 228/1 "G" body connections	Process Valve	Rubber Packed	Solenoid Pilot	5/2 Threaded or 3/2-5/2 NAMUR Spring Return	1/4"	Spade Plug Connection (IP65), with standard connector	Standard NAMUR (3/2 and 5/2) (LH Orientation with Standard TYPE 1 NAMUR)	G521A2B12S83MFQ
ISO 228/1 "G" body connections	Process Valve	Rubber Packed	Solenoid Pilot	5/2 Threaded or 3/2-5/2 NAMUR Spring Return	1/4"	Spade Plug Connection (IP65), with standard connector	Standard NAMUR (3/2 and 5/2) (LH Orientation with Standard TYPE 1 NAMUR)	G521A2B12S83MFS
ISO 228/1 "G" body connections	Process Valve	Rubber Packed	Solenoid Pilot	5/2 Threaded or 3/2-5/2 NAMUR Spring Return	1/4"	Spade Plug Connection (IP65), with standard connector	Reverse NAMUR (3/2 and 5/2) (RH Orientation with Reverse TYPE 2 NAMUR)	G521A2B12S83PEW
ISO 228/1 "G" body connections	Process Valve	Rubber Packed	Solenoid Pilot	5/2 Threaded or 3/2-5/2 NAMUR Spring Return	1/4"	Spade Plug Connection (IP65), with standard connector	Reverse NAMUR (3/2 and 5/2) (RH Orientation with Reverse TYPE 2 NAMUR)	G521A2B12S83PEY
ISO 228/1 "G" body connections	Process Valve	Rubber Packed	Solenoid Pilot	5/2 Threaded or 3/2-5/2 NAMUR Spring Return	1/4"	Spade Plug Connection (IP65), with standard connector	Reverse NAMUR (3/2 and 5/2) (RH Orientation with Reverse TYPE 2 NAMUR)	G521A2B12S83PF1
ISO 228/1 "G" body connections	Process Valve	Rubber Packed	Solenoid Pilot	5/2 Threaded or 3/2-5/2 NAMUR Spring Return	1/4"	Spade Plug Connection (IP65), with standard connector	Reverse NAMUR (3/2 and 5/2) (RH Orientation with Reverse TYPE 2 NAMUR)	G521A2B12S83PF3
ISO 228/1 "G" body connections	Process Valve	Rubber Packed	Solenoid Pilot	5/2 Threaded or 3/2-5/2 NAMUR Spring Return	1/4"	Spade Plug Connection (IP65), with standard connector	Reverse NAMUR (3/2 and 5/2) (RH Orientation with Reverse TYPE 2 NAMUR)	G521A2B12S83PF9
ISO 228/1 "G" body connections	Process Valve	Rubber Packed	Solenoid Pilot	5/2 Threaded or 3/2-5/2 NAMUR Spring Return	1/4"	Spade Plug Connection (IP65), with standard connector	Reverse NAMUR (3/2 and 5/2) (RH Orientation with Reverse TYPE 2 NAMUR)	G521A2B12S83PFH
ISO 228/1 "G" body connections	Process Valve	Rubber Packed	Solenoid Pilot	5/2 Threaded or 3/2-5/2 NAMUR Spring Return	1/4"	Spade Plug Connection (IP65), with standard connector	Reverse NAMUR (3/2 and 5/2) (RH Orientation with Reverse TYPE 2 NAMUR)	G521A2B12S83PFQ
ISO 228/1 "G" body connections	Process Valve	Rubber Packed	Solenoid Pilot	5/2 Threaded or 3/2-5/2 NAMUR Spring Return	1/4"	Spade Plug Connection (IP65), with standard connector	Reverse NAMUR (3/2 and 5/2) (RH Orientation with Reverse TYPE 2 NAMUR)	G521A2B12S83PFS
ISO 228/1 "G" body connections	Process Valve	Rubber Packed	Solenoid Pilot	5/2 Threaded or 3/2-5/2 NAMUR Dual Solenoid	1/4"	Spade Plug Connection (IP65), with standard connector	Standard NAMUR (3/2 and 5/2) (LH Orientation with Standard TYPE 1 NAMUR)	G521A2B42S83MEW
ISO 228/1 "G" body connections	Process Valve	Rubber Packed	Solenoid Pilot	5/2 Threaded or 3/2-5/2 NAMUR Dual Solenoid	1/4"	Spade Plug Connection (IP65), with standard connector	Standard NAMUR (3/2 and 5/2) (LH Orientation with Standard TYPE 1 NAMUR)	G521A2B42S83MEY
ISO 228/1 "G" body connections	Process Valve	Rubber Packed	Solenoid Pilot	5/2 Threaded or 3/2-5/2 NAMUR Dual Solenoid	1/4"	Spade Plug Connection (IP65), with standard connector	Standard NAMUR (3/2 and 5/2) (LH Orientation with Standard TYPE 1 NAMUR)	G521A2B42S83MF1

SPECIFICATIONS

Port Type	Product Series	Valve Type	Solenoid Type	Function	Port Size	Electrical	Options	Catalog Number
ISO 228/1 "G" body connections	Process Valve	Rubber Packed	Solenoid Pilot	5/2 Threaded or 3/2-5/2 NAMUR Dual Solenoid	1/4"	Spade Plug Connection (IP65), with standard connector	Standard NAMUR (3/2 and 5/2) (LH Orientation with Standard TYPE 1 NAMUR)	G521A2B42S83MF3
ISO 228/1 "G" body connections	Process Valve	Rubber Packed	Solenoid Pilot	5/2 Threaded or 3/2-5/2 NAMUR Dual Solenoid	1/4"	Spade Plug Connection (IP65), with standard connector	Standard NAMUR (3/2 and 5/2) (LH Orientation with Standard TYPE 1 NAMUR)	G521A2B42S83MF9
ISO 228/1 "G" body connections	Process Valve	Rubber Packed	Solenoid Pilot	5/2 Threaded or 3/2-5/2 NAMUR Dual Solenoid	1/4"	Spade Plug Connection (IP65), with standard connector	Standard NAMUR (3/2 and 5/2) (LH Orientation with Standard TYPE 1 NAMUR)	G521A2B42S83MFH
ISO 228/1 "G" body connections	Process Valve	Rubber Packed	Solenoid Pilot	5/2 Threaded or 3/2-5/2 NAMUR Dual Solenoid	1/4"	Spade Plug Connection (IP65), with standard connector	Standard NAMUR (3/2 and 5/2) (LH Orientation with Standard TYPE 1 NAMUR)	G521A2B42S83MFQ
ISO 228/1 "G" body connections	Process Valve	Rubber Packed	Solenoid Pilot	5/2 Threaded or 3/2-5/2 NAMUR Dual Solenoid	1/4"	Spade Plug Connection (IP65), with standard connector	Standard NAMUR (3/2 and 5/2) (LH Orientation with Standard TYPE 1 NAMUR)	G521A2B42S83MFS
ISO 228/1 "G" body connections	Process Valve	Rubber Packed	Solenoid Pilot	5/2 Threaded or 3/2-5/2 NAMUR Dual Solenoid	1/4"	Spade Plug Connection (IP65), with standard connector	Reverse NAMUR (3/2 and 5/2) (RH Orientation with Reverse TYPE 2 NAMUR)	G521A2B42S83PEW
ISO 228/1 "G" body connections	Process Valve	Rubber Packed	Solenoid Pilot	5/2 Threaded or 3/2-5/2 NAMUR Dual Solenoid	1/4"	Spade Plug Connection (IP65), with standard connector	Reverse NAMUR (3/2 and 5/2) (RH Orientation with Reverse TYPE 2 NAMUR)	G521A2B42S83PEY
ISO 228/1 "G" body connections	Process Valve	Rubber Packed	Solenoid Pilot	5/2 Threaded or 3/2-5/2 NAMUR Dual Solenoid	1/4"	Spade Plug Connection (IP65), with standard connector	Reverse NAMUR (3/2 and 5/2) (RH Orientation with Reverse TYPE 2 NAMUR)	G521A2B42S83PF1
ISO 228/1 "G" body connections	Process Valve	Rubber Packed	Solenoid Pilot	5/2 Threaded or 3/2-5/2 NAMUR Dual Solenoid	1/4"	Spade Plug Connection (IP65), with standard connector	Reverse NAMUR (3/2 and 5/2) (RH Orientation with Reverse TYPE 2 NAMUR)	G521A2B42S83PF3
ISO 228/1 "G" body connections	Process Valve	Rubber Packed	Solenoid Pilot	5/2 Threaded or 3/2-5/2 NAMUR Dual Solenoid	1/4"	Spade Plug Connection (IP65), with standard connector	Reverse NAMUR (3/2 and 5/2) (RH Orientation with Reverse TYPE 2 NAMUR)	G521A2B42S83PF9
ISO 228/1 "G" body connections	Process Valve	Rubber Packed	Solenoid Pilot	5/2 Threaded or 3/2-5/2 NAMUR Dual Solenoid	1/4"	Spade Plug Connection (IP65), with standard connector	Reverse NAMUR (3/2 and 5/2) (RH Orientation with Reverse TYPE 2 NAMUR)	G521A2B42S83PFH
ISO 228/1 "G" body connections	Process Valve	Rubber Packed	Solenoid Pilot	5/2 Threaded or 3/2-5/2 NAMUR Dual Solenoid	1/4"	Spade Plug Connection (IP65), with standard connector	Reverse NAMUR (3/2 and 5/2) (RH Orientation with Reverse TYPE 2 NAMUR)	G521A2B42S83PFQ
ISO 228/1 "G" body connections	Process Valve	Rubber Packed	Solenoid Pilot	5/2 Threaded or 3/2-5/2 NAMUR Dual Solenoid	1/4"	Spade Plug Connection (IP65), with standard connector	Reverse NAMUR (3/2 and 5/2) (RH Orientation with Reverse TYPE 2 NAMUR)	G521A2B42S83PFS



FEATURES

- The "NAMUR" style spool valve comes with threaded port connection and Namur interface, while the "THREADED" style spool valve comes with threaded port connection
- All the exhaust ports of this spool valve are connectable, providing better environmental protection, particularly recommended for sensitive areas such as clean rooms as well as applications in the pharmaceutical and food processing sectors
- The valve offers environmental protection against the ingress of liquids, dusts or any other foreign matters (environmentally-protected construction)



STANDARD VOLTAGES

DC (=) : 24V - 110V

AC (-) : 48V - 110V - 115V - 120V - 220V - 230V - 240V / 50 - 60 Hz

SPECIFICATIONS

Pipe Size	Orifice Size	Flow Coefficient Kv		Operating Pressure Differential (bar)			Prefix					Catalog Number	Suffix
				Min.	Max. (PS)		SC	PV	WBLP	EF/VCEF ⁽¹⁾	JPIS/JSIS		
					~	=							
(mm)	(m ³ /h)	(l/min)	Air										
THREADED 5/2 - Solenoid air pilot operated - spring return (Single Solenoid)													
1/4	6	0.95	15.5	2	10	10	•	•	•	-	-	❖531C017	MS
1/4	6	0.95	15.5	2	10	10	-	-	-	•	-	G531H317	MO
THREADED 5/2 - Solenoid air pilot operated and return (Double Solenoid)													
1/4	6	0.95	15.5	2	10	10	•	•	•	-	-	❖531C018	MS
1/4	6	0.95	15.5	2	10	10	-	-	-	•	-	G531H318	MO
NAMUR 3/2 NC - 5/2 - Solenoid air pilot operated - spring return (Single Solenoid)													
1/4	6	0.95	15.5	2	10	10	•	•	•	-	-	❖531C001	MS
1/4	6	0.95	15.5	2	10	10	-	-	-	-	•	8531B301	MO
NAMUR 3/2 NC - 5/2 - Solenoid air pilot operated and return (Double Solenoid)													
1/4	6	0.95	15.5	2	10	10	•	•	•	-	-	❖531C002	MS

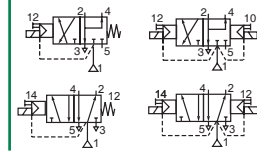
• Available Express

❖ Select 8 for NPT ANSI 1.20.3 or select G for ISO G (228/1)

(1) VCEF can be mounted in 4 directions & 3 conduit sizes

SOLENOID VALVES

15/16 pilot operated, spool type
single/dual solenoid
aluminium body, 1/4, Namur and
Threaded style



3/2
5/2
Series
531

FEATURES

- The "Namur" style spool valve have threaded port connection and Namur interface, and "Threaded" style spool valve have threaded port connections
- All the exhaust ports of this spool valve are connectable, providing better environmental protection, particularly recommended for sensitive areas such as clean rooms, and applications in the pharmaceutical and food processing sectors
- The valve offers environmental protection against the ingress of liquids, dusts or any other foreign matter (environmentally-protected construction)
- Can be externally piloted (external air pilot supply) to convert valve to zero minimum operation by flipping a gasket
- Stainless steel manual operator as standard



STANDARD VOLTAGES

DC (=) : 24V

AC (-) : 110V - 120V - 220V - 240V / 50 - 60 Hz

SPECIFICATIONS

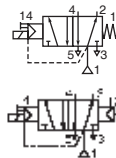
Pipe Size	Orifice Size	Flow Coefficient Kv		Operating Pressure Differential (bar)			Prefix				Catalog Number
				Min.	Max. (PS)		EF/VCEF ⁽¹⁾	VC	JKH	Red Hat II NEMA 4	
					~	=					
(mm)	(m ³ /h)	(l/min)									
NAMUR 3/2 NC-5/2- Solenoid air pilot operated - spring return (Single Solenoid)											
1/4	6	0.95	15.5	2	10	10	•	-	-	-	G531H401MO
1/4	6	0.95	15.5	2	10	10	•	•	-	•	8531G401MO
1/4	6	0.95	15.5	2	10	10	•	-	-	-	G531H301MO
1/4	6	0.95	15.5	2	10	10	•	•	-	-	8531G301MO
THREADED 5/2- Solenoid air pilot operated - spring return (Single Solenoid)											
1/4	6	0.95	15.5	2	10	10	•	-	•	-	G531H417MO

• Available Express

(1) VCEF can be mounted in 4 directions & 3 conduit sizes

MULTIFUNCTION SPOOL VALVE

solenoid air operated
according to ISO 5599/1



5/2
5/3
Series
541-542

FEATURES

- *Reliability: Long service life of 30 million cycles*
- *Choice of internal / external supply with selector seals (vacuum to -0.95 bar)*
- *Modular assembly with joinable subbases*
- *High flow to control large actuators*

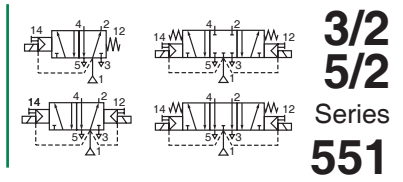


SPECIFICATIONS

Function	Size	Response Time (ms)		Pilot Pressure (bar)		Catalog Number
		Energized	De-energized	min.	max.	
spring return	ISO 2	19	68	2.5	10	54292023
	ISO 1	25	66	3	10	54191023
air return	ISO 1	21	-	1.5	10	54191025

SPOOL VALVES

aluminium, stainless steel or brass body
1/4 threaded and NAMUR



FEATURES

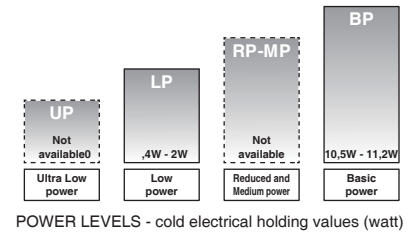
- The monostable spool valves in conformity with IEC 61508 Standard (2010 route 2H version) have TÜV and EXIDA certified with integrity levels: SIL 2 for HFT = 0 / SIL 3 for HFT = 1
- All the exhaust ports of this spool valve are connectable, providing better environmental protection, particularly recommended for sensitive areas such as clean rooms, and applications in the pharmaceutical and food processing sectors
- The valve offers environmental protection against the ingress of liquids, dusts or any other foreign matter (environmentally-protected construction)
- The solenoid valves satisfy all relevant EC Directives



STANDARD VOLTAGES

DC (=) : 24V - 48V

AC (-) : 100V - 110V - 115V - 120V - 208V - 220V - 230V - 240V / 50 - 60 Hz



SPECIFICATIONS

Pipe Size	Orifice Size	Flow Coefficient Kv		Operating Pressure Differential (bar)		Prefix														Catalog Number			Options						
						Max. (PS)		SC	VC	PV	WBLP	EF/VCEF ⁽²⁾⁽³⁾	EV/VCEV ⁽⁶⁾	NF/WSNF	NFET/WSNFET	JPIS/JSIS ⁽⁵⁾	HT	JKF	JKH	Red Hat II NEMA 4	Stainless Steel	Aluminium		Brass					
						Min. ⁽¹⁾	Air																						
THREADED 3/2 - Solenoid air pilot operated - spring return (monostable)																													
1/4	6	0.75	12.5	2	10	10	•	-	•	•	-	-	-	-	-	-	-	-	-	-	-	-	-	-	•551A005	-	MS		
1/4	6	0.75	12.5	0/2	10	10	-	-	-	-	-	-	-	-	-	-	-	-	-	-	-	-	-	-	•551B405	-	MO		
1/4	6	0.75	12.5	2	10	8.2	-	-	-	•	-	-	-	-	-	-	-	-	-	-	-	-	-	-	8551G405	-	MO		
1/4	6	0.75	12.5	0/2	10	10	•	•	-	•	-	-	-	-	-	-	-	-	-	-	-	-	-	-	•551H405 ⁽⁸⁾	-	MO		
1/4	6	0.75	12.5	0/2	10	10	-	-	-	•	-	-	-	-	-	-	-	-	-	-	-	-	-	-	8551G305	-	MO		
1/4	6	0.75	12.5	0/2	10	10	•	-	-	-	-	•	•	•	-	-	-	-	-	-	-	-	-	-	•551B305	-	MO		
1/4	6	0.7	11.7	0/3	10	10	-	• ⁽⁶⁾	-	-	•	-	-	-	-	-	-	-	-	-	-	-	-	-	•551H305 ⁽⁸⁾	-	MO		
1/4	6	0.75	12.5	0/2	10	10	•	-	-	-	-	-	-	-	-	-	-	-	-	-	-	-	-	•551A313	-	MO			
1/4	6	0.75	12.5	0/2	10	10	-	-	-	-	-	-	-	•	-	-	-	-	-	-	-	-	-	-	8551B313	-	MO		
1/4	6	0.75	12.5	0/2	10	10	-	•	-	-	•	• ⁽⁶⁾	-	-	-	-	-	-	-	-	-	-	-	-	8551G313	-	MO		
1/4	6	0.75	12.5	0/2	10	10	-	-	-	-	•	-	-	-	-	-	-	-	-	-	-	-	-	-	8551A413	-	MO		
1/4	6	0.75	12.5	0/2	10	10	-	-	•	-	-	-	-	-	-	-	-	-	-	-	-	-	-	-	8551D413	-	MO		
1/4	6	0.75	12.5	0/2	10	10	•	•	-	-	•	-	-	-	-	-	-	-	-	-	-	-	-	-	•551G413	-	MO		
THREADED 3/2 - Solenoid air pilot operated - spring return (bistable)																													
1/4	6	0.75	12.5	0/2	10	10	-	-	-	-	-	-	-	-	-	-	-	-	-	-	-	-	-	-	8551B314	-	-		
THREADED 5/2 - Solenoid air pilot operated - spring return (monostable)																													
1/4	6	0.75	12.5	2	10	10	•	-	•	•	-	-	-	-	-	-	-	-	-	-	-	-	-	-	-	•551A017 ⁽⁴⁾	-	MS	
1/4	6	0.75	12.5	0/2	10	10	-	-	•	-	-	-	-	-	-	-	-	-	-	-	-	-	-	-	-	•551A421	-	MO	
1/4	6	0.75	12.5	0/2	10	10	-	-	•	-	-	-	-	-	-	-	-	-	-	-	-	-	-	-	-	8551D421	-	MO	
1/4	6	0.75	12.5	0/2	10	10	•	•	-	-	•	•	-	-	-	-	-	-	-	-	-	-	-	-	-	•551G421	-	MO	
1/4	6	0.75	12.5	2	10	8.2	-	-	-	-	-	-	-	-	-	-	-	-	-	-	-	-	-	-	-	8551G417	-	MO	
1/4	6	0.75	12.5	0/2	10	10	-	-	-	-	-	-	-	•	-	-	-	-	-	-	-	-	-	-	-	•551B417	-	MO	
1/4	6	0.75	12.5	0/2	10	10	-	-	•	-	-	-	-	-	-	-	-	-	-	-	-	-	-	-	-	G551D417	-	MO	
1/4	6	0.75	12.5	0/2	10	10	•	•	-	-	•	-	-	-	-	-	-	-	-	-	-	-	-	-	-	•551H417 ⁽⁸⁾	-	MO	
1/4	6	0.75	12.5	0/2	10	10	•	-	-	-	-	•	-	-	-	-	-	-	-	-	-	-	-	-	-	-	8551A319	MO	
1/4	6	0.74	12.5	2.4	-	9	-	-	-	-	-	-	-	•	-	-	-	-	-	-	-	-	-	-	-	-	8551B319	-	
1/4	6	0.75	12.5	0/2	10	10	-	-	-	-	•	-	-	-	-	-	-	-	-	-	-	-	-	-	-	-	8551G319	MO	
1/4	6	0.75	12.5	0/2	10	10	-	-	•	-	-	-	-	-	-	-	-	-	-	-	-	-	-	-	-	-	G551D419	MO	
1/4	6	0.75	12.5	0/2	10	10	•	•	-	-	•	-	-	-	-	-	-	-	-	-	-	-	-	-	-	-	•551G419	MO	
1/4	6	0.75	12.5	0/2	10	10	•	-	•	-	-	•	-	-	-	-	-	-	-	-	-	-	-	-	-	-	•551A321	-	MO
1/4	6	0.75	12.5	0/2	10	10	-	-	-	-	-	-	-	•	-	-	-	-	-	-	-	-	-	-	-	-	8551B321	-	MO
1/4	6	0.75	12.5	0/2	10	10	-	• ⁽⁶⁾	-	-	•	• ⁽⁶⁾	-	-	-	-	-	-	-	-	-	-	-	-	-	-	•551G321	-	MO
1/4	6	0.75	12.5	2	10	10	-	-	-	-	•	-	-	-	-	-	-	-	-	-	-	-	-	-	-	-	8551G317	-	MO
1/4	6	0.75	12.5	0/2	10	10	•	-	•	-	-	•	-	-	-	-	-	-	-	-	-	-	-	-	-	-	•551B317	-	MO
1/4	6	0.75	12.5	0/3	10	10	-	• ⁽⁶⁾	-	-	• ⁽⁶⁾	-	-	-	-	-	-	-	-	-	-	-	-	-	-	-	•551H317 ⁽⁸⁾	-	MO

APC-Rev.1.1(12/2016) per prospectus list in December 2016

SPECIFICATIONS

Pipe Size	Orifice Size	Flow Coefficient Kv		Operating Pressure Differential (bar)		Prefix														Catalog Number			Options							
						Min. (1)	Max. (PS) Air	SC	VC	PV	WBLP	EF/VCEF ⁽²⁾⁽³⁾	EV/VCEV ⁽⁶⁾	NF/WSNF	NFET/WSNFET	JPIS/JSIS ⁽⁵⁾	HT	JKF	JKH	Red Hat II NEMA 4	Stainless Steel	Aluminium		Brass						
																									~	=				
THREADED 5/2 - Solenoid air pilot operated and return (Double solenoid)																														
1/4	6	0.75	12.5	2	10	10	●	-	●	●	-	-	-	-	-	-	-	-	-	-	ϕ551A018 ⁽⁴⁾	-	MS							
1/4	6	0.75	12.5	0/2	10	10	-	-	-	-	-	-	●	-	-	-	-	-	-	-	ϕ551A422	-	MO							
1/4	6	0.75	12.5	0/2	10	10	●	●	-	-	-	●	-	-	-	-	●	●	●	-	ϕ551G422	-	MO							
1/4	6	0.75	12.5	0/2	10	10	-	-	-	-	-	-	●	-	-	-	-	-	-	-	-	ϕ551B418	-	MO						
1/4	6	0.75	12.5	0/2	10	10	-	-	-	-	-	-	●	-	-	-	-	●	●	-	-	8551G418	-	MO						
1/4	6	0.75	12.5	0/4	10	10	●	●	-	-	●	-	-	-	-	-	●	●	●	-	-	ϕ551H418 ⁽⁸⁾	-	MO						
1/4	6	0.75	12.5	0/2	10	10	●	-	-	-	-	-	●	-	-	-	-	-	-	-	ϕ551A322	-	MO							
1/4	6	0.75	12.5	0/2	10	10	-	-	-	-	-	-	-	-	-	-	-	-	-	-	8551B322	-	MO							
1/4	6	0.75	12.5	0/2	10	10	-	-	-	-	-	-	●	-	-	-	-	-	-	-	ϕ551G322	-	MO							
1/4	6	0.75	12.5	0/2	10	10	●	-	-	-	-	-	●	-	-	-	-	-	-	-	-	ϕ551B318	-	MO						
1/4	6	0.75	12.5	0/2	10	10	-	●	-	-	●	-	-	-	-	-	-	-	-	-	-	8551G318	-	MO						
1/4	6	0.75	12.5	0/3	10	10	-	-	-	-	●	-	-	-	-	-	-	-	-	-	-	ϕ551H318 ⁽⁸⁾	-	-						
1/4	6	0.75	12.5	0/3	10	10	●	-	●	-	-	-	●	-	-	-	-	-	-	-	-	-	ϕ551A320	MO						
1/4	6	0.75	12.5	0/2	10	10	-	-	-	-	●	-	-	-	-	-	-	-	-	-	-	-	8551G320	MO						
1/4	6	0.75	12.5	0/2	10	10	●	-	-	-	●	-	-	-	-	-	-	-	-	-	-	-	ϕ551G420	MO						
1/4	6	0.75	12.5	0/3	10	10	-	-	-	-	-	-	-	-	-	-	-	-	-	-	-	-	8551B320	MO						
NAMUR 3/2 NC - 5/2 - Solenoid air pilot operated - spring return (Single solenoid)																														
1/4	6	0.6	10	2	10	10	●	-	●	●	-	-	-	-	-	-	-	-	-	-	-	-	ϕ551A001	-	MS					
1/4	6	0.6	10	0/2	10	10	-	-	-	-	-	-	●	-	-	-	-	-	-	-	-	-	-	ϕ551B401	-	MO				
1/4	6	0.7	11.7	2	10	10	●	●	-	-	●	-	-	-	-	●	●	●	-	-	-	-	-	8551G401	-	MO				
1/4	6	0.6	10	0/2	10	10	-	-	●	-	-	-	-	-	-	-	-	-	-	-	-	-	-	ϕ551D401	-	MO				
1/4	6	0.6	10	0/2	10	10	●	●	-	-	●	-	-	-	-	●	●	●	●	-	-	-	-	ϕ551H401 ⁽⁸⁾	-	MO				
1/4	6	0.6	10	0/2	10	10	-	-	●	-	-	-	-	-	-	-	-	-	-	-	-	-	-	G551D403	MO					
1/4	6	0.6	10	0/2	10	10	●	●	-	-	●	●	-	-	-	●	●	●	●	-	-	-	-	ϕ551G403	MO					
1/4	6	0.6	10	0/2	10	10	-	-	-	-	-	-	●	-	-	-	-	-	-	-	-	-	-	ϕ551A409	-	MO				
1/4	6	0.6	10	0/2	10	10	-	-	●	-	-	-	-	-	-	-	-	-	-	-	-	-	-	ϕ551D409	-	MO				
1/4	6	0.6	10	0/2	10	10	●	●	-	-	●	●	-	-	-	●	●	●	●	-	-	-	-	ϕ551G409	-	MO				
1/4	6	0.7	11.7	0/2	10	10	-	-	-	-	●	-	-	-	-	-	●	-	-	-	-	-	-	8551G301	-	MO				
1/4	6	0.7	11.7	0/2	10	10	●	-	●	-	-	●	●	-	-	-	-	-	-	-	-	-	-	ϕ551B301	-	MO				
1/4	6	0.7	11.7	0/3	10	10	-	-	●	-	-	-	-	-	-	-	-	-	-	-	-	-	-	ϕ551H301 ⁽⁸⁾	-	MO				
1/4	6	0.6	10	0/2	10	10	●	-	-	-	-	-	●	-	-	-	-	-	-	-	-	-	-	-	ϕ551A303	MO				
1/4	6	0.6	10	0/2	10	10	-	-	-	-	-	-	-	-	-	-	-	-	-	-	-	-	-	-	8551B303	MO				
1/4	6	0.7	10	2	10	10	-	●	-	-	●	-	-	-	-	-	-	-	-	-	-	-	-	-	8551G303	MO				
1/4	6	0.6	10	0/2	10	10	●	-	●	-	-	-	●	●	-	-	-	-	-	-	-	-	-	-	ϕ551A309	-	MO			
1/4	6	0.6	10	0/2	10	10	-	-	-	-	-	-	-	-	-	-	-	-	-	-	-	-	-	-	ϕ551B309	-	MO			
1/4	6	0.6	10	0/2	10	10	-	-	●	-	-	-	●	-	-	-	-	-	-	-	-	-	-	-	ϕ551G309	-	MO			
NAMUR 3/2 NC - 5/2 - Solenoid air pilot operated and return (Double Solenoid)																														
1/4	6	0.6	10	2	10	10	●	-	●	●	-	-	-	-	-	-	-	-	-	-	-	-	-	-	ϕ551A002	-	MS			
1/4	6	0.6	10	0/2	10	10	-	-	-	-	-	-	●	-	-	-	-	-	-	-	-	-	-	-	-	ϕ551B402	-	MO		
1/4	6.4	0.7	11.7	0/2	10	8.2	-	●	-	-	●	-	-	-	-	-	●	-	-	-	-	-	-	-	-	8551G402	-	MO		
1/4	6.4	0.7	11.7	0/2	10	8.2	●	●	-	-	●	-	-	-	-	-	●	●	●	-	-	-	-	-	-	ϕ551H402 ⁽⁸⁾	-	MO		
1/4	6	0.6	10	0/2	10	10	●	-	-	-	-	-	-	-	-	-	-	-	-	-	-	-	-	-	-	-	G551A304	MO		
1/4	6	0.7	11.7	2	-	9	-	-	-	-	-	-	-	-	-	●	-	-	-	-	-	-	-	-	-	-	8551B304	-	-	
1/4	6	0.6	10	0/2	10	10	-	-	-	-	●	-	-	-	-	-	-	-	-	-	-	-	-	-	-	-	8551G304	-	-	
1/4	6	0.6	10	0/2	10	10	●	●	-	-	●	-	-	-	-	-	-	-	-	-	-	-	-	-	-	-	ϕ551G404	MO		
1/4	6	0.6	10	0/2	10	10	-	-	-	-	-	-	●	-	-	-	-	-	-	-	-	-	-	-	-	-	-	MO		
1/4	6	0.6	10	0/2	10	10	●	●	-	-	●	●	-	-	-	-	●	●	●	●	-	-	-	-	-	-	-	ϕ551A410	-	MO
1/4	6	0.6	10	0/2	10	10	●	●	-	-	●	●	-	-	-	-	●	●	●	●	-	-	-	-	-	-	-	ϕ551G410	-	MO
1/4	6	0.7	11.7	2	10	10	-	●	-	-	●	-	-	-	-	-	●	-	-	-	-	-	-	-	-	-	-	8551G302	-	MO
1/4	6	0.6	10	0/2	10	10	●	-	●	-	-	-	●	-	-	-	-	-	-	-	-	-	-	-	-	-	-	ϕ551B302	-	MO
1/4	6	0.6	10	0/2	10	10	-	●	-	-	-	-	-	-	-	-	-	-	-	-	-	-	-	-	-	-	-	ϕ551H302 ⁽⁸⁾	-	MO
1/4	6	0.6	10	0/2	10	10	●	-	●	-	-	-	●	-	-	-	-	-	-	-	-	-	-	-	-	-	-	ϕ551A310	-	MO
1/4	6	0.6	10	0/2	10	10	-	-	-	-	-	-	-	-	-	-	-	-	-	-	-	-	-	-	-	-	-	ϕ551B310	-	MO
1/4	6	0.6	10	0/2	10	10	-	-	●	-	-	-	●	-	-	-	-	-	-	-	-	-	-	-	-	-	-	ϕ551G310	-	MO

- Available Express
- (1) Zero minimum is only achieved if external pressure is applied
- (2) ATEX certified VCEF & VCEV come with TPL24062
- (3) VCEF can be mounted in 4 directions & 3 conduit sizes; EF/VCEF for aluminum body only, EF/VCEF with SS body replaced by EV/VCEV
- (4) TPL 20787: Replacement of coil PV-M22 BY coil EM5
- (5) DC only. For JPIS/JSIS 551 with single solenoid, operating pressure differential is 2.4 to 9 bar.
For JPIS/JSIS 551 with double solenoids, operating pressure differential is 2 to 9 bar.
- (6) VCEV can be mounted in 4 directions: AM, BM, CM, DM
- (7) Code 8 (NPT thread) should be used with the design letter G in the basic number
- (8) For 8551A320 with Red Hat II NEMA 4 solenoid, the Catalog Number should be 8551G320
- ϕ Select 8 for NPT ANSI 1.20.3 or select G for ISO G (228/1)

PREFIX TABLE

Prefix							Description	Power Level			
1	2	3	4	5	6	7		LP	RP	MP	BP
E	F						Explosionproof - NEMA 7, 9 - Zinc plated steel conduit	○	-	-	●
V	C	E	F				Flameproof/Encapsulated - Aluminium NEPSI (GB3836)	○	●	-	●
V	C	E	V				Flameproof/Encapsulated - 316L SS NEPSI (GB3836)	○	●	-	●
P	V						Encapsulated epoxy moulded (EN/IEC 60079-18, 61241-18)*	○	-	-	●
S	C						Solenoid with spade plug connector (EN/IEC 60730)	●	-	-	●
N	F						Flameproof - Aluminium (EN/IEC 60079-1, 60079-31)*	●	-	-	●
W	S	N	F				Flameproof - 316L SS (EN/IEC 60079-1, 60079-31)*	●	-	-	●
W	B	L	P				I.S./encapsulation with PBT IP67 enclosure (EN/IEC 60079-7+18+21)	-	●	-	-
				H	T		Class H - High temperature, +80°C ambient temp.	-	-	-	●
J	P	I	S				Aluminum Junction Box with 1/2" NPT Conduit	●	-	-	-
J	S	I	S				316L SS Junction Box with 1/2" NPT Conduit				
J	K	F					Class F High Temperature Spade or Screw Terminal Coils	●	-	-	-
J	K	H					Class H High Temperature Spade or Screw Terminal Coils	-	-	-	●
						X	Other special constructions	●	-	-	●

SUFFIX TABLE

Suffix							Description	Power Level			
1	2	3	4	5	6	7		LP	RP	MP	BP
			M	O			Push type manual operator	○/●	-	-	○

FEATURES

- The 450 Series is an aluminum body with stainless steel tie rod air cylinder line that is designed to meet all ISO 15552 requirements. The 450 Series offers an extensive range of accessories allowing easy installation for virtually every application. This durable tie rod cylinder design allows customers to achieve maximum productivity desired with low friction.



SPECIFICATIONS

Thread Connection	Product Series	Bore (mm)	Cylinder Type	Rod Option	Recommended Standard Strokes (mm)	Catalog Number
ISO 228/1	450	32	Single Rod, Double Acting	Standard	25	G450A3SK0025A00
ISO 228/1	450	32	Single Rod, Double Acting	Standard	50	G450A3SK0050A00
ISO 228/1	450	32	Single Rod, Double Acting	Standard	80	G450A3SK0080A00
ISO 228/1	450	32	Single Rod, Double Acting	Standard	100	G450A3SK0100A00
ISO 228/1	450	32	Single Rod, Double Acting	Standard	125	G450A3SK0125A00
ISO 228/1	450	32	Single Rod, Double Acting	Standard	160	G450A3SK0160A00
ISO 228/1	450	32	Single Rod, Double Acting	Standard	185	G450A3SK0185A00
ISO 228/1	450	32	Single Rod, Double Acting	Standard	200	G450A3SK0200A00
ISO 228/1	450	32	Single Rod, Double Acting	Standard	250	G450A3SK0250A00
ISO 228/1	450	32	Single Rod, Double Acting	Standard	320	G450A3SK0320A00
ISO 228/1	450	32	Single Rod, Double Acting	Standard	400	G450A3SK0400A00
ISO 228/1	450	40	Single Rod, Double Acting	Standard	25	G450A4SK0025A00
ISO 228/1	450	40	Single Rod, Double Acting	Standard	50	G450A4SK0050A00
ISO 228/1	450	40	Single Rod, Double Acting	Standard	80	G450A4SK0080A00
ISO 228/1	450	40	Single Rod, Double Acting	Standard	100	G450A4SK0100A00
ISO 228/1	450	40	Single Rod, Double Acting	Standard	125	G450A4SK0125A00
ISO 228/1	450	40	Single Rod, Double Acting	Standard	160	G450A4SK0160A00
ISO 228/1	450	40	Single Rod, Double Acting	Standard	200	G450A4SK0200A00
ISO 228/1	450	40	Single Rod, Double Acting	Standard	250	G450A4SK0250A00
ISO 228/1	450	40	Single Rod, Double Acting	Standard	320	G450A4SK0320A00
ISO 228/1	450	40	Single Rod, Double Acting	Standard	400	G450A4SK0400A00
ISO 228/1	450	40	Single Rod, Double Acting	Standard	500	G450A4SK0500A00
ISO 228/1	450	40	Single Rod, Double Acting	Standard	630	G450A4SK0630A00
ISO 228/1	450	50	Single Rod, Double Acting	Standard	25	G450A5SK0025A00
ISO 228/1	450	50	Single Rod, Double Acting	Standard	50	G450A5SK0050A00
ISO 228/1	450	50	Single Rod, Double Acting	Standard	80	G450A5SK0080A00
ISO 228/1	450	50	Single Rod, Double Acting	Standard	100	G450A5SK0100A00
ISO 228/1	450	50	Single Rod, Double Acting	Standard	125	G450A5SK0125A00
ISO 228/1	450	50	Single Rod, Double Acting	Standard	160	G450A5SK0160A00
ISO 228/1	450	50	Single Rod, Double Acting	Standard	200	G450A5SK0200A00
ISO 228/1	450	50	Single Rod, Double Acting	Standard	250	G450A5SK0250A00
ISO 228/1	450	50	Single Rod, Double Acting	Standard	320	G450A5SK0320A00
ISO 228/1	450	50	Single Rod, Double Acting	Standard	400	G450A5SK0400A00
ISO 228/1	450	50	Single Rod, Double Acting	Standard	500	G450A5SK0500A00
ISO 228/1	450	50	Single Rod, Double Acting	Standard	630	G450A5SK0630A00
ISO 228/1	450	50	Single Rod, Double Acting	Standard	700	G450A5SK0700A00
ISO 228/1	450	63	Single Rod, Double Acting	Standard	25	G450A6SK0025A00
ISO 228/1	450	63	Single Rod, Double Acting	Standard	50	G450A6SK0050A00
ISO 228/1	450	63	Single Rod, Double Acting	Standard	80	G450A6SK0080A00
ISO 228/1	450	63	Single Rod, Double Acting	Standard	100	G450A6SK0100A00
ISO 228/1	450	63	Single Rod, Double Acting	Standard	125	G450A6SK0125A00
ISO 228/1	450	63	Single Rod, Double Acting	Standard	160	G450A6SK0160A00
ISO 228/1	450	63	Single Rod, Double Acting	Standard	200	G450A6SK0200A00
ISO 228/1	450	63	Single Rod, Double Acting	Standard	250	G450A6SK0250A00
ISO 228/1	450	63	Single Rod, Double Acting	Standard	320	G450A6SK0320A00
ISO 228/1	450	63	Single Rod, Double Acting	Standard	400	G450A6SK0400A00
ISO 228/1	450	63	Single Rod, Double Acting	Standard	500	G450A6SK0500A00
ISO 228/1	450	63	Single Rod, Double Acting	Standard	630	G450A6SK0630A00
ISO 228/1	450	63	Single Rod, Double Acting	Standard	700	G450A6SK0700A00
ISO 228/1	450	63	Single Rod, Double Acting	Standard	800	G450A6SK0800A00

SPECIFICATIONS

Thread Connection	Product Series	Bore (mm)	Cylinder Type	Rod Option	Recommended Standard Strokes (mm)	Catalog Number
ISO 228/1	450	63	Single Rod, Double Acting	Standard	900	G450A6SK0900A00
ISO 228/1	450	80	Single Rod, Double Acting	Standard	25	G450A8SK0025A00
ISO 228/1	450	80	Single Rod, Double Acting	Standard	50	G450A8SK0050A00
ISO 228/1	450	80	Single Rod, Double Acting	Standard	80	G450A8SK0080A00
ISO 228/1	450	80	Single Rod, Double Acting	Standard	100	G450A8SK0100A00
ISO 228/1	450	80	Single Rod, Double Acting	Standard	125	G450A8SK0125A00
ISO 228/1	450	80	Single Rod, Double Acting	Standard	160	G450A8SK0160A00
ISO 228/1	450	80	Single Rod, Double Acting	Standard	200	G450A8SK0200A00
ISO 228/1	450	80	Single Rod, Double Acting	Standard	250	G450A8SK0250A00
ISO 228/1	450	80	Single Rod, Double Acting	Standard	320	G450A8SK0320A00
ISO 228/1	450	80	Single Rod, Double Acting	Standard	400	G450A8SK0400A00
ISO 228/1	450	80	Single Rod, Double Acting	Standard	500	G450A8SK0500A00
ISO 228/1	450	80	Single Rod, Double Acting	Standard	630	G450A8SK0630A00
ISO 228/1	450	80	Single Rod, Double Acting	Standard	700	G450A8SK0700A00
ISO 228/1	450	80	Single Rod, Double Acting	Standard	800	G450A8SK0800A00
ISO 228/1	450	80	Single Rod, Double Acting	Standard	900	G450A8SK0900A00
ISO 228/1	450	80	Single Rod, Double Acting	Standard	1000	G450A8SK1000A00
ISO 228/1	450	100	Single Rod, Double Acting	Standard	25	G450A1SK0025A00
ISO 228/1	450	100	Single Rod, Double Acting	Standard	50	G450A1SK0050A00
ISO 228/1	450	100	Single Rod, Double Acting	Standard	80	G450A1SK0080A00
ISO 228/1	450	100	Single Rod, Double Acting	Standard	100	G450A1SK0100A00
ISO 228/1	450	100	Single Rod, Double Acting	Standard	125	G450A1SK0125A00
ISO 228/1	450	100	Single Rod, Double Acting	Standard	160	G450A1SK0160A00
ISO 228/1	450	100	Single Rod, Double Acting	Standard	200	G450A1SK0200A00
ISO 228/1	450	100	Single Rod, Double Acting	Standard	250	G450A1SK0250A00
ISO 228/1	450	100	Single Rod, Double Acting	Standard	320	G450A1SK0320A00
ISO 228/1	450	100	Single Rod, Double Acting	Standard	400	G450A1SK0400A00
ISO 228/1	450	100	Single Rod, Double Acting	Standard	500	G450A1SK0500A00
ISO 228/1	450	100	Single Rod, Double Acting	Standard	630	G450A1SK0630A00
ISO 228/1	450	100	Single Rod, Double Acting	Standard	700	G450A1SK0700A00
ISO 228/1	450	100	Single Rod, Double Acting	Standard	800	G450A1SK0800A00
ISO 228/1	450	100	Single Rod, Double Acting	Standard	900	G450A1SK0900A00
ISO 228/1	450	100	Single Rod, Double Acting	Standard	1000	G450A1SK1000A00
ISO 228/1	450	100	Single Rod, Double Acting	Standard	1500	G450A1SK1500A00
ISO 228/1	450	125	Single Rod, Double Acting	Standard	25	G450APSK0025A00
ISO 228/1	450	125	Single Rod, Double Acting	Standard	50	G450APSK0050A00
ISO 228/1	450	125	Single Rod, Double Acting	Standard	80	G450APSK0080A00
ISO 228/1	450	125	Single Rod, Double Acting	Standard	100	G450APSK0100A00
ISO 228/1	450	125	Single Rod, Double Acting	Standard	125	G450APSK0125A00
ISO 228/1	450	125	Single Rod, Double Acting	Standard	160	G450APSK0160A00
ISO 228/1	450	125	Single Rod, Double Acting	Standard	200	G450APSK0200A00
ISO 228/1	450	125	Single Rod, Double Acting	Standard	250	G450APSK0250A00
ISO 228/1	450	125	Single Rod, Double Acting	Standard	320	G450APSK0320A00
ISO 228/1	450	125	Single Rod, Double Acting	Standard	400	G450APSK0400A00
ISO 228/1	450	125	Single Rod, Double Acting	Standard	500	G450APSK0500A00
ISO 228/1	450	125	Single Rod, Double Acting	Standard	630	G450APSK0630A00
ISO 228/1	450	125	Single Rod, Double Acting	Standard	700	G450APSK0700A00
ISO 228/1	450	125	Single Rod, Double Acting	Standard	800	G450APSK0800A00
ISO 228/1	450	125	Single Rod, Double Acting	Standard	900	G450APSK0900A00
ISO 228/1	450	125	Single Rod, Double Acting	Standard	1000	G450APSK1000A00
ISO 228/1	450	125	Single Rod, Double Acting	Standard	1500	G450APSK1500A00
ISO 228/1	450	160	Single Rod, Double Acting	Standard	25	G450AQSK0025A00
ISO 228/1	450	160	Single Rod, Double Acting	Standard	50	G450AQSK0050A00
ISO 228/1	450	160	Single Rod, Double Acting	Standard	80	G450AQSK0080A00
ISO 228/1	450	160	Single Rod, Double Acting	Standard	100	G450AQSK0100A00
ISO 228/1	450	160	Single Rod, Double Acting	Standard	125	G450AQSK0125A00
ISO 228/1	450	160	Single Rod, Double Acting	Standard	160	G450AQSK0160A00
ISO 228/1	450	160	Single Rod, Double Acting	Standard	200	G450AQSK0200A00
ISO 228/1	450	160	Single Rod, Double Acting	Standard	250	G450AQSK0250A00
ISO 228/1	450	160	Single Rod, Double Acting	Standard	320	G450AQSK0320A00
ISO 228/1	450	160	Single Rod, Double Acting	Standard	400	G450AQSK0400A00
ISO 228/1	450	160	Single Rod, Double Acting	Standard	450	G450AQSK0450A00
ISO 228/1	450	160	Single Rod, Double Acting	Standard	500	G450AQSK0500A00

APC-Rev.11(12/2016) per prospectus list in December 2016

SPECIFICATIONS

Thread Connection	Product Series	Bore (mm)	Cylinder Type	Rod Option	Recommended Standard Strokes (mm)	Catalog Number
ISO 228/1	450	160	Single Rod, Double Acting	Standard	630	G450AQSK0630A00
ISO 228/1	450	160	Single Rod, Double Acting	Standard	700	G450AQSK0700A00
ISO 228/1	450	160	Single Rod, Double Acting	Standard	800	G450AQSK0800A00
ISO 228/1	450	160	Single Rod, Double Acting	Standard	900	G450AQSK0900A00
ISO 228/1	450	160	Single Rod, Double Acting	Standard	1000	G450AQSK1000A00
ISO 228/1	450	160	Single Rod, Double Acting	Standard	1500	G450AQSK1500A00
ISO 228/1	450	200	Single Rod, Double Acting	Standard	25	G450ARSK0025A00
ISO 228/1	450	200	Single Rod, Double Acting	Standard	50	G450ARSK0050A00
ISO 228/1	450	200	Single Rod, Double Acting	Standard	80	G450ARSK0080A00
ISO 228/1	450	200	Single Rod, Double Acting	Standard	100	G450ARSK0100A00
ISO 228/1	450	200	Single Rod, Double Acting	Standard	125	G450ARSK0125A00
ISO 228/1	450	200	Single Rod, Double Acting	Standard	160	G450ARSK0160A00
ISO 228/1	450	200	Single Rod, Double Acting	Standard	200	G450ARSK0200A00
ISO 228/1	450	200	Single Rod, Double Acting	Standard	250	G450ARSK0250A00
ISO 228/1	450	200	Single Rod, Double Acting	Standard	320	G450ARSK0320A00
ISO 228/1	450	200	Single Rod, Double Acting	Standard	400	G450ARSK0400A00
ISO 228/1	450	200	Single Rod, Double Acting	Standard	500	G450ARSK0500A00
ISO 228/1	450	200	Single Rod, Double Acting	Standard	630	G450ARSK0630A00
ISO 228/1	450	200	Single Rod, Double Acting	Standard	700	G450ARSK0700A00
ISO 228/1	450	200	Single Rod, Double Acting	Standard	800	G450ARSK0800A00
ISO 228/1	450	200	Single Rod, Double Acting	Standard	900	G450ARSK0900A00
ISO 228/1	450	200	Single Rod, Double Acting	Standard	1000	G450ARSK1000A00
ISO 228/1	450	200	Single Rod, Double Acting	Standard	1500	G450ARSK1500A00

FEATURES

- The 453 Series is an aluminum body air cylinder that is designed to meet all ISO 15552 requirements. The 453 Series is a lighter and modern-looking cylinder with a sturdy tie rod design inside for optimal technical performance.



SPECIFICATIONS

Thread Connection	Product Series	Bore (mm)	Cylinder Type	Rod Option	Recommended Standard Strokes (mm)	Catalog Number
ISO 228/1	453	32	Single Rod, Double Acting	Standard	25	G453A3SK0025A00
ISO 228/1	453	32	Single Rod, Double Acting	Standard	50	G453A3SK0050A00
ISO 228/1	453	32	Single Rod, Double Acting	Standard	80	G453A3SK0080A00
ISO 228/1	453	32	Single Rod, Double Acting	Standard	100	G453A3SK0100A00
ISO 228/1	453	32	Single Rod, Double Acting	Standard	125	G453A3SK0125A00
ISO 228/1	453	32	Single Rod, Double Acting	Standard	150	G453A3SK0150A00
ISO 228/1	453	32	Single Rod, Double Acting	Standard	160	G453A3SK0160A00
ISO 228/1	453	32	Single Rod, Double Acting	Standard	200	G453A3SK0200A00
ISO 228/1	453	32	Single Rod, Double Acting	Standard	230	G453A3SK0230A00
ISO 228/1	453	32	Single Rod, Double Acting	Standard	250	G453A3SK0250A00
ISO 228/1	453	32	Single Rod, Double Acting	Standard	320	G453A3SK0320A00
ISO 228/1	453	32	Single Rod, Double Acting	Standard	400	G453A3SK0400A00
ISO 228/1	453	40	Single Rod, Double Acting	Standard	25	G453A4SK0025A00
ISO 228/1	453	40	Single Rod, Double Acting	Standard	50	G453A4SK0050A00
ISO 228/1	453	40	Single Rod, Double Acting	Standard	80	G453A4SK0080A00
ISO 228/1	453	40	Single Rod, Double Acting	Standard	100	G453A4SK0100A00
ISO 228/1	453	40	Single Rod, Double Acting	Standard	125	G453A4SK0125A00
ISO 228/1	453	40	Single Rod, Double Acting	Standard	160	G453A4SK0160A00
ISO 228/1	453	40	Single Rod, Double Acting	Standard	200	G453A4SK0200A00
ISO 228/1	453	40	Single Rod, Double Acting	Standard	250	G453A4SK0250A00
ISO 228/1	453	40	Single Rod, Double Acting	Standard	320	G453A4SK0320A00
ISO 228/1	453	40	Single Rod, Double Acting	Standard	365	G453A4SK0365A00
ISO 228/1	453	40	Single Rod, Double Acting	Standard	400	G453A4SK0400A00
ISO 228/1	453	40	Single Rod, Double Acting	Standard	500	G453A4SK0500A00
ISO 228/1	453	40	Single Rod, Double Acting	Standard	630	G453A4SK0630A00
ISO 228/1	453	50	Single Rod, Double Acting	Standard	25	G453A5SK0025A00
ISO 228/1	453	50	Single Rod, Double Acting	Standard	30	G453A5SK0030A00
ISO 228/1	453	50	Single Rod, Double Acting	Standard	50	G453A5SK0050A00
ISO 228/1	453	50	Single Rod, Double Acting	Standard	80	G453A5SK0080A00
ISO 228/1	453	50	Single Rod, Double Acting	Standard	100	G453A5SK0100A00
ISO 228/1	453	50	Single Rod, Double Acting	Standard	125	G453A5SK0125A00
ISO 228/1	453	50	Single Rod, Double Acting	Standard	160	G453A5SK0160A00
ISO 228/1	453	50	Single Rod, Double Acting	Standard	200	G453A5SK0200A00
ISO 228/1	453	50	Single Rod, Double Acting	Standard	250	G453A5SK0250A00
ISO 228/1	453	50	Single Rod, Double Acting	Standard	320	G453A5SK0320A00
ISO 228/1	453	50	Single Rod, Double Acting	Standard	325	G453A5SK0325A00
ISO 228/1	453	50	Single Rod, Double Acting	Standard	400	G453A5SK0400A00
ISO 228/1	453	50	Single Rod, Double Acting	Standard	500	G453A5SK0500A00
ISO 228/1	453	50	Single Rod, Double Acting	Standard	630	G453A5SK0630A00
ISO 228/1	453	50	Single Rod, Double Acting	Standard	700	G453A5SK0700A00
ISO 228/1	453	63	Single Rod, Double Acting	Standard	25	G453A6SK0025A00
ISO 228/1	453	63	Single Rod, Double Acting	Standard	50	G453A6SK0050A00
ISO 228/1	453	63	Single Rod, Double Acting	Standard	75	G453A6SK0075A00
ISO 228/1	453	63	Single Rod, Double Acting	Standard	80	G453A6SK0080A00
ISO 228/1	453	63	Single Rod, Double Acting	Standard	100	G453A6SK0100A00
ISO 228/1	453	63	Single Rod, Double Acting	Standard	125	G453A6SK0125A00
ISO 228/1	453	63	Single Rod, Double Acting	Standard	160	G453A6SK0160A00
ISO 228/1	453	63	Single Rod, Double Acting	Standard	200	G453A6SK0200A00
ISO 228/1	453	63	Single Rod, Double Acting	Standard	250	G453A6SK0250A00

SPECIFICATIONS

Thread Connection	Product Series	Bore (mm)	Cylinder Type	Rod Option	Recommended Standard Strokes (mm)	Catalog Number
ISO 228/1	453	63	Single Rod, Double Acting	Standard	320	G453A6SK0320A00
ISO 228/1	453	63	Single Rod, Double Acting	Standard	400	G453A6SK0400A00
ISO 228/1	453	63	Single Rod, Double Acting	Standard	500	G453A6SK0500A00
ISO 228/1	453	63	Single Rod, Double Acting	Standard	630	G453A6SK0630A00
ISO 228/1	453	63	Single Rod, Double Acting	Standard	700	G453A6SK0700A00
ISO 228/1	453	63	Single Rod, Double Acting	Standard	800	G453A6SK0800A00
ISO 228/1	453	63	Single Rod, Double Acting	Standard	900	G453A6SK0900A00
ISO 228/1	453	80	Single Rod, Double Acting	Standard	25	G453A8SK0025A00
ISO 228/1	453	80	Single Rod, Double Acting	Standard	50	G453A8SK0050A00
ISO 228/1	453	80	Single Rod, Double Acting	Standard	80	G453A8SK0080A00
ISO 228/1	453	80	Single Rod, Double Acting	Standard	100	G453A8SK0100A00
ISO 228/1	453	80	Single Rod, Double Acting	Standard	125	G453A8SK0125A00
ISO 228/1	453	80	Single Rod, Double Acting	Standard	160	G453A8SK0160A00
ISO 228/1	453	80	Single Rod, Double Acting	Standard	200	G453A8SK0200A00
ISO 228/1	453	80	Single Rod, Double Acting	Standard	250	G453A8SK0250A00
ISO 228/1	453	80	Single Rod, Double Acting	Standard	320	G453A8SK0320A00
ISO 228/1	453	80	Single Rod, Double Acting	Standard	400	G453A8SK0400A00
ISO 228/1	453	80	Single Rod, Double Acting	Standard	500	G453A8SK0500A00
ISO 228/1	453	80	Single Rod, Double Acting	Standard	630	G453A8SK0630A00
ISO 228/1	453	80	Single Rod, Double Acting	Standard	700	G453A8SK0700A00
ISO 228/1	453	80	Single Rod, Double Acting	Standard	800	G453A8SK0800A00
ISO 228/1	453	80	Single Rod, Double Acting	Standard	900	G453A8SK0900A00
ISO 228/1	453	80	Single Rod, Double Acting	Standard	1000	G453A8SK1000A00
ISO 228/1	453	100	Single Rod, Double Acting	Standard	25	G453A1SK0025A00
ISO 228/1	453	100	Single Rod, Double Acting	Standard	50	G453A1SK0050A00
ISO 228/1	453	100	Single Rod, Double Acting	Standard	80	G453A1SK0080A00
ISO 228/1	453	100	Single Rod, Double Acting	Standard	100	G453A1SK0100A00
ISO 228/1	453	100	Single Rod, Double Acting	Standard	125	G453A1SK0125A00
ISO 228/1	453	100	Single Rod, Double Acting	Standard	160	G453A1SK0160A00
ISO 228/1	453	100	Single Rod, Double Acting	Standard	200	G453A1SK0200A00
ISO 228/1	453	100	Single Rod, Double Acting	Standard	250	G453A1SK0250A00
ISO 228/1	453	100	Single Rod, Double Acting	Standard	320	G453A1SK0320A00
ISO 228/1	453	100	Single Rod, Double Acting	Standard	400	G453A1SK0400A00
ISO 228/1	453	100	Single Rod, Double Acting	Standard	500	G453A1SK0500A00
ISO 228/1	453	100	Single Rod, Double Acting	Standard	630	G453A1SK0630A00
ISO 228/1	453	100	Single Rod, Double Acting	Standard	700	G453A1SK0700A00
ISO 228/1	453	100	Single Rod, Double Acting	Standard	75	G450A6SK0075A00
ISO 228/1	453	100	Single Rod, Double Acting	Standard	800	G453A1SK0800A00
ISO 228/1	453	100	Single Rod, Double Acting	Standard	900	G453A1SK0900A00
ISO 228/1	453	100	Single Rod, Double Acting	Standard	1000	G453A1SK1000A00
ISO 228/1	453	100	Single Rod, Double Acting	Standard	1500	G453A1SK1500A00

SOLENOID VALVES

Air Pilot Actuated / Rubber Package
M7 Thread & 6mm push-in fitting with 11mm wide
G3/580 Fieldbus capability

Series
501

FEATURES

- Solenoid air pilot actuated
- Low wattage .8 wall for DC application
- DC solenoids Polarity insensitive with surge suppression
- Plug together circuit boards eliminate internal wiring
- Integral recessed gaskets
- IN Fittings to accommodate various tube sizes
- Simple conversion from internal to external pilot
- IP65 Certified
- Shut off block for individual valve to be isolated from pressure supply during operation and repair
- G3/580 Fieldbus capability



STANDARD VOLTAGES

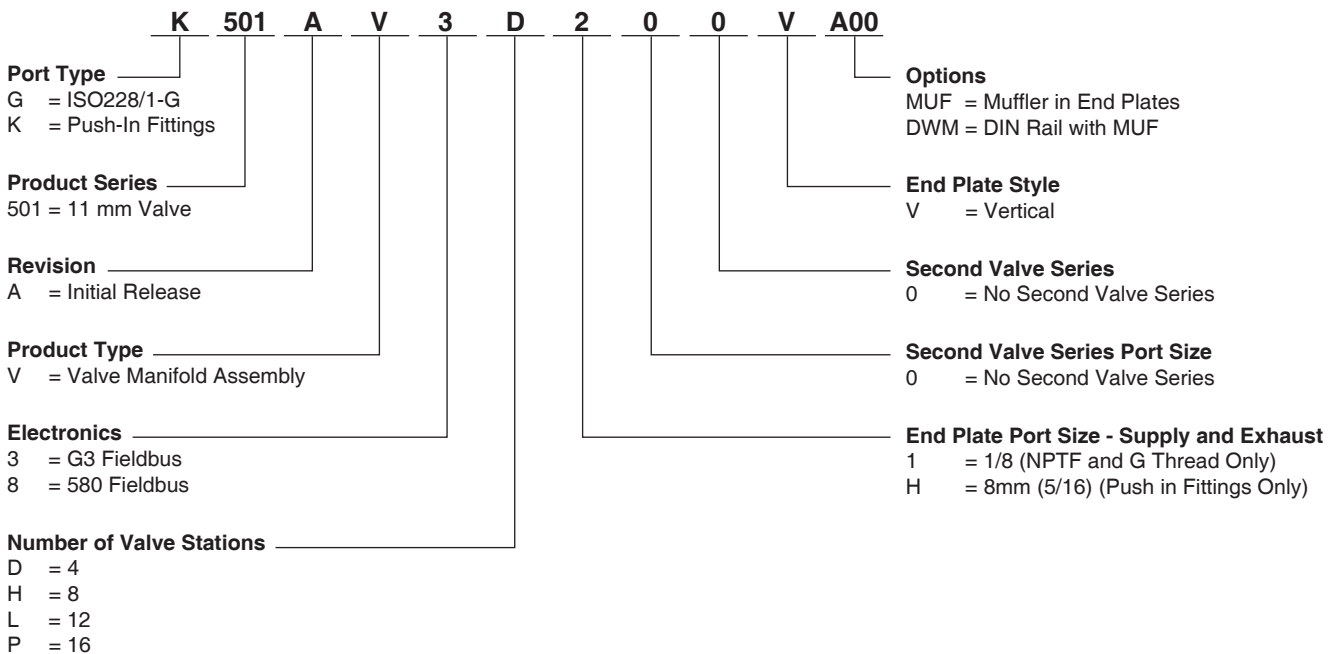
DC (=) : 24V

SPECIFICATIONS

Port Type	Product Series	Product Type	Mounting	Port Size	Wiring Option	Options	Interface	Catalog Number
Metric Thread	501	Manifold Sub Base	Manifold Sub Base, 4 Stations, Side Ports, Double Z-Board	M7 (Threaded only)	Plug-In, Receptacle Assembly	Standard	Proprietary	H501AMM4BMA0010
Push-In Fittings	501	Manifold Sub Base	Manifold Sub Base, 4 Stations, Side Ports, Double Z-Board	6 mm (Push-In Fittings only)	Plug-In, Receptacle Assembly	Standard	Proprietary	K501AMM4FMA0010
No Port Size	501	Sandwich function	Proprietary Sandwich Shut Off Kit	No Port Size	Plug-In	Standard	Proprietary	R501AY428501001

Product Series	Actuation	Valve Type	Function	Port Size	Electrical	Options	Catalog Number
501	n/a	Blank Station Plate	Blank Station Plate Kit	No Port Size	Plug-in	Standard	P501AB429685001
501	Rubber Packed	Solenoid Pilot with Flush Non-Locking Override	2 Position 4-Way (5/2), Spring Return	No Port Size	Plug-in, w/ Light, VDC	Flush Locking Manual Override	R501A2B10M11BF1
501	Rubber Packed	Solenoid Pilot with Flush Non-Locking Override	2 Position 4-Way (5/2), Dual Solenoid	No Port Size	Plug-in, w/ Light, VDC	Flush Locking Manual Override	R501A2B40M11BF1
501	Rubber Packed	Solenoid Pilot with Flush Non-Locking Override	Dual 3-way, A normally closed - B normally closed	No Port Size	Plug-in, w/ Light, VDC	Flush Locking Manual Override	R501A2BD0M11BF1

MANIFOLD ASSEMBLY HOW TO ORDER



SOLENOID VALVES

Air Pilot Actuated / Spool & Sleeve and Rubber
G1/4 & 8mm push-in fitting with 26mm wide
G3/580 Fieldbus capability

Series
503

FEATURES

- Solenoid air pilot actuated
- Low wattage – 1.7 watt for DC application
- DC solenoids polarity insensitive with surge suppression
- Plug together circuit boards eliminate internal wiring
- Integral recessed gaskets
- IN Fittings to accommodate various tube sizes
- Simple conversion from internal to external pilot
- IP65 Certified
- Shut off block for individual valve to be isolated from pressure supply during operation and repair
- G3/580 Fieldbus capability



STANDARD VOLTAGES

DC (=) : 24V

SPECIFICATIONS

Port Type	Product Series	Product Type	Mounting	Port Size	Wiring Option	Options	Interface	Catalog Number
ISO228/1-G	503	Manifold Base	Manifold Base, 2 Stations, Side Ports, Double Z-Board	1/4	Plug-in, Receptacle Assembly	Standard	Proprietary	G503AMM22MA0010
Push-in Fittings	503	Manifold Base	Manifold Base, 2 Stations, Side Ports, Double Z-Board	8 mm	Plug-in, Receptacle Assembly	Standard	Proprietary	K503AMM2HMA0010

Product Series	Actuation	Valve Type	Function	Port Size	Electrical	Options	Catalog Number
503	n/a	Blank Station Plate	Blank Station Plate Kit	No Port Size	Plug-in	Standard	P503AB428359001
503	Spool and Sleeve	Solenoid Pilot with Flush Non-Locking Override	2 Position 4-Way (5/2), Spring Return	No Port Size	Plug-in, w/ Light, VDC	Flush Locking Manual Override	R503A1B10M11BF1
503	Spool and Sleeve	Solenoid Pilot with Flush Non-Locking Override	2 Position 4-Way (5/2), Dual Solenoid	No Port Size	Plug-in, w/ Light, VDC	Flush Locking Manual Override	R503A1B40M11BF1
503	Rubber Packed	Solenoid Pilot with Flush Non-Locking Override	2 Position 4-Way (5/2), Spring Return	No Port Size	Plug-in, w/ Light, VDC	Flush Locking Manual Override	R503A2B10M11BF1
503	Rubber Packed	Solenoid Pilot with Flush Non-Locking Override	2 Position 4-Way (5/2), Dual Solenoid	No Port Size	Plug-in, w/ Light, VDC	Flush Locking Manual Override	R503A2B40M11BF1
503	Rubber Packed	Solenoid Pilot with Flush Non-Locking Override	3 Position 4-Way (5/3), Blocked Center	No Port Size	Plug-in, w/ Light, VDC	Flush Locking Manual Override	R503A2B60M11BF1
503	n/a	Sandwich function	Proprietary Sandwich Shut Off Kit	No Port Size	Plug-in	Standard	R503AY426707002

MANIFOLD ASSEMBLY HOW TO ORDER

8 503 A V 3 B 2 0 0 V A00

Port Type

G = ISO228/1-G
K = Push-In Fittings

Product Series

503 = 26 mm Valve

Revision

A = Initial Release

Product Type

V = Valve Manifold Assembly

Electronics

3 = G3 Fieldbus Electronics
8 = 580 Fieldbus

Options

MUF = Muffler in End Plates
DWM = DIN Rail with MUF

End Plate Style

V = Vertical

End Plate Port Size

K = 3/8
V = 10 mm

Number of Valve Stations

B = 2	J = 10
D = 4	L = 12
F = 6	N = 14
H = 8	P = 16

FEATURES

- Innovative Graphic Display is used for easy commissioning, visual status & diagnostics No internal wiring simplifies assembly
- No internal wiring simplifies assembly
- Power connector allows output power to be removed while inputs and communication are left active
- IP65 protection
- 32 valve solenoids per manifold
- CE Mark



STANDARD VOLTAGES

DC (=) : 24V

SPECIFICATIONS

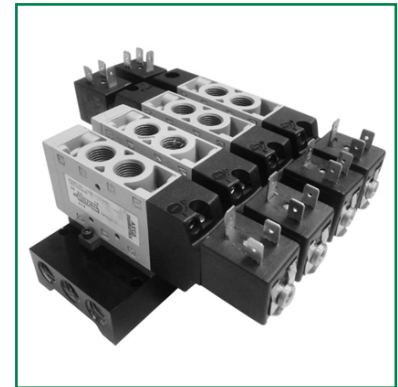
Product Series	Product Type	Protocol	Connector Type	Description	Catalog Number
580	Electronics	PROFIBUS DP	5 pin M12 (1 male and 1 female)	No Options	P580AEPT1010A00
580	Electronics	PROFIBUS DP	5 pin M12 (1 male and 1 female)	DIN Rail Mount	P580AEPT1010DRM
580	Electronics	PROFINET	Two D-coded 4 pin M12 (female)	No Options	P580AEPN1010A00
580	Electronics	PROFINET	Two D-coded 4 pin M12 (female)	DIN Rail Mount	P580AEPN1010DRM
580	Connector	PROFINET	M12 Straight 4 Pin, Male	Communication Port, PG7	QA04F200R000071N
580	Terminating Resistor	PROFIBUS DP	M12 Straight 5 Pin, Male	Communication Port	RA05TR0000000000
580	Connector	PROFIBUS DP	M12 Straight 5 Pin, Male	Communication Port, Bus Out, PG7	RA05F200P0000000
580	Connector	PROFIBUS DP	M12 Straight 5 Pin, Female	Communication Port, Bus In, PG7	RC05F200P0000000
580	Connector	PROFINET PROFIBUS DP	M12 Straight 5 Pin, Male ,90°	Power Port, PG9	TD05F20000000000

FEATURES

- Solenoid pilot
- DIN plug-in solenoid
- Unlubricated or lubricated service
- In-line or manifold mounted

STANDARD VOLTAGES

DC (=) : 12V - 24V
 AC (-) : 230 / 50 - 60V



SPECIFICATIONS

Port Size	Valve Type	Function	Wiring	Catalog Number
G1/8	Single Solenoid Pilot, Sping Return W/Flush Locking Override	2 Position, 4-Way	DIN Plug-In DC Solenoid	HV434441-001
	Double Solenoid Pilot W/Flush Locking Override	2 Position, 4-Way	DIN Plug-In DC Solenoid	HV434441-002
	Double Solenoid Pilot W/Flush Locking Override	3 Position, 4-Way Closed Center	DIN Plug-In DC Solenoid	HV434441-003
	Single Solenoid Pilot, Sping Return W/Flush Locking Override	2 Position, 4-Way	DIN Plug-In AC Solenoid or Air Pilot	HV434441-004
	Double Solenoid Pilot W/Flush Locking Override	2 Position, 4-Way	DIN Plug-In AC Solenoid or Air Pilot	HV434441-005
	Double Solenoid Pilot W/Flush Locking Override	3 Position, 4-Way Closed Center	DIN Plug-In AC Solenoid or Air Pilot	HV434441-006
G1/4	Single Solenoid Pilot, Sping Return W/Flush Locking Override	2 Position, 4-Way	DIN Plug-In DC Solenoid or Air Pilot	HV434441-101
	Double Solenoid Pilot W/Flush Locking Override	2 Position, 4-Way	DIN Plug-In DC Solenoid or Air Pilot	HV434441-102
	Double Solenoid Pilot W/Flush Locking Override	3 Position, 4-Way Closed Center	DIN Plug-In AC Solenoid or Air Pilot	HV434441-103
	Single Solenoid Pilot, Sping Return W/Flush Locking Override	2 Position, 4-Way	DIN Plug-In AC Solenoid or Air Pilot	HV434441-104
	Double Solenoid Pilot W/Flush Locking Override	2 Position, 4-Way	DIN Plug-In AC Solenoid or Air Pilot	HV434441-105
	Double Solenoid Pilot W/Flush Locking Override	3 Position, 4-Way Closed Center	DIN Plug-In AC Solenoid or Air Pilot	HV434441-106
	Double Solenoid Pilot W/Flush Locking Override	3 Position, 4-Way Open Center	DIN Plug-In DC Solenoid or Air Pilot	HV434441-107
	Double Solenoid Pilot W/Flush Locking Override	3 Position, 4-Way Open Center	DIN Plug-In AC Solenoid or Air Pilot	HV434441-108

FEATURES

- Compact designed valves to standard ISO 5599/1
- Solenoid pilot and air pilot actuated
- Solenoid operator with standard epoxy encapsulated coil
- 5-ported, 2 and 3 position
- Lapped spool and sleeve assembly
- Housing made from aluminium alloy
- Lubricated or unlubricated operation
- AC or DC voltage
- Electrical: IP65 w/plug-in connector
- With locking manual overrides

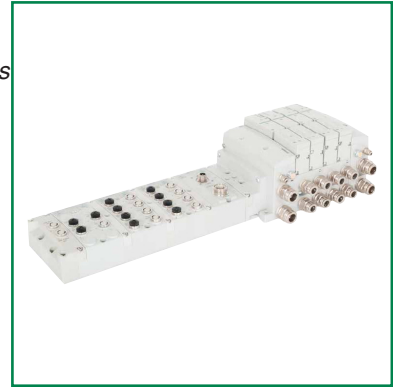


SPECIFICATIONS

Port Size	Valve Type	Function	Mounting	Voltage Option	Catalog Number
ISO1 1/4" (Single & Joinable base)	Dual air pilot actuated	2 Position, 4-Way	Valve only	Air pilot actuated	C12PP4000000000
ISO1 1/4" (Single & Joinable base)	Single air pilot actuated, Spring return		Valve only	Air pilot actuated	C12PA4000000000
ISO1 1/4" (Single & Joinable base)	Single air pilot actuated, Spring return		Valve only	Air pilot actuated	C12PA4000012B00
ISO1 1/4" (Single & Joinable base)	Dual air pilot actuated		Valve only	Air pilot actuated	C12PP4000012B00
ISO1 1/4" (Single & Joinable base)	Single Solenoid Pilot, Spring return		Valve only	AC	C12BA4002011B30
ISO1 1/4" (Single & Joinable base)	Single Solenoid Pilot, Spring return		Valve with side ported single base	AC	C12BA4412G11B30
ISO2 3/8"(Single) or 1/2"(Joinable)	Single Solenoid Pilot, Spring return		Valve only	AC	C23BA4002011B30
ISO1 1/4" (Single & Joinable base)	Single Solenoid Pilot, Spring return		Valve only	AC	C12BA4002011B40
ISO1 1/4" (Single & Joinable base)	Single Solenoid Pilot, Spring return		Valve with side ported single base	AC	C12BA4412G11B40
ISO1 1/4" (Single & Joinable base)	Single Solenoid Pilot, Spring return		Valve only	AC	C12BA4002012B40
ISO2 3/8"(Single) or 1/2"(Joinable)	Single Solenoid Pilot, Spring return		Valve only	AC	C23BA4002011B40
ISO2 3/8"(Single) or 1/2"(Joinable)	Double Solenoid Pilot		Valve only	AC	C23BB4002011B40
ISO2 1/2"(Single base)	Single Solenoid Pilot, Spring return		Valve with side ported single base	AC	C24BA4412G11B40
ISO2 1/2"(Single base)	Double Solenoid Pilot		Valve with side ported single base	AC	C24BB4412G11B40
ISO1 1/4" (Single & Joinable base)	Single Solenoid Pilot, Spring return		Valve only	DC	C12BA4004011B61
ISO1 1/4" (Single & Joinable base)	Single Solenoid Pilot, Spring return		Valve with side ported single base	DC	C12BA4414G11B61
ISO1 1/4" (Single & Joinable base)	Single Solenoid Pilot, Spring return		Valve only	DC	C12BA4004012B61
ISO2 3/8"(Single) or 1/2"(Joinable)	Single Solenoid Pilot, Spring return		Valve only	DC	C23BA4004011B61
ISO2 3/8"(Single) or 1/2"(Joinable)	Double Solenoid Pilot		Valve only	DC	C23BB4004011B61
ISO2 1/2"(Single base)	Double Solenoid Pilot		Valve with side ported single base	DC	C24BA4414G11B61
ISO1 1/4"	Single Solenoid Pilot, Spring Return		Valve only	DC	HV434442-001
ISO1 1/4"	Single Solenoid Pilot, Spring Return		Valve only	AC	HV434442-002
ISO2 3/8"	Double Solenoid Pilot		Valve only	DC	HV434442-101
ISO2 3/8"	Double Solenoid Pilot		Valve only	AC	HV434442-102

FEATURES

- Innovative Graphic Display is used for easy commissioning, visual status & diagnostics
No internal wiring simplifies assembly
- SPEEDCON M12 connector technology allows for fast and efficient ½ turn I/O connector attachment
- Power connector allows output power to be removed while inputs and communication are left active
- IP65 protection
- Up to 1200 Input/1200 Output capability with one communication node!
(Present physical I/O combinations allows 1200 I/544 O)
- 32 valve solenoids per manifold, up to 17 manifolds/branch per communication node!
- One node supports 16 I/O modules – Analog I/O, Digital I/O (NPN & PNP) and Specialty
- Innovative clip design allows easy module removal/replacement without dismantling manifold
- Auto Recovery Module (ARM) protects configuration information during a critical failure. Allows configuration information to be saved and reloaded to replacement module automatically
- CE Mark



STANDARD VOLTAGES

DC (=) : 24V

SPECIFICATIONS

Product Series	Product Type	Protocol	Connector Type	Description	Catalog Number
G3	Electronics	PROFIBUS DP	5 pin M12 type (1 male and 1 female)	Replacement Code	240-239
G3	Electronics	PROFINET	Two D-coded 4 pin M12 type (female)	Replacement Code	240-240
G3	Electronics	SUB-BUS	5 pin M12 type (male)	Replacement Code	240-241
G3	Electronics	POWERLINK	Two D-coded 4 pin M12 type (female)	Replacement Code	240-309
G3	Connector	POWERLINK SUB-BUS	M12 4 Pin, Male, 90°	Power Port, PG9	MD04F2000000000
G3	Connector	PROFINET PROFIBUS DP	M12 5 Pin, Male ,90°	Power Port, PG9	MD05F2000000000
G3	Connector	POWERLINK PROFINET	M12 Straight 4 Pin Male	Comunication Port, PG 9, Screw Terminal	QA04F2000000000
G3	Connector	PROFIBUS DP	M12 Straight 5 Pin, Male	Comunication Port, Bus Out, PG7	RA05F200P0000000
G3	Terminating Resistor	PROFIBUS DP	M12 Straight 5 Pin, Male	Comunication Port	RA05TR0000000000
G3	Connector	PROFIBUS DP	M12 Straight 5 Pin, Female	Comunication Port, Bus In, PG7	RC05F200P0000000
G3	Connector	SUB-BUS	M12 90° 5 Pin, Male	Comunication Port, Bus Out, PG9	TB05F2000000071V
G3	Connector	SUB-BUS	M12 90° 5 Pin, Female	Comunication Port, Bus In, PG9	TD05F2000000071V

Product Series	Product Type	Singnal type	Connector Type	Remark	Catalog Number
G3	I/O Moduel	16 PNP Digital Inputs	Terminal Strip	Assembly/Replacement Code	240-203
G3	I/O Moduel	16 NPN Digital Inputs	Terminal Strip	Assembly/rReplacement Code	240-204
G3	I/O Moduel	16 PNP Digital Inputs	5-pin M12 * 8 port	Assembly/Replacement Code	240-205
G3	I/O Moduel	16 NPN Digital Inputs	5-pin M12 * 8 port	Assembly/Replacement Code	240-209

MANIFOLD ASSEMBLY HOW TO ORDER

G3 EP1 00 R 0 STD

Electronics Protocols

- PL1 = Ethernet POWERLINK®
- PT1 = PROFIBUS-DP
- PN1 = PROFINET
- DS2 = Sub-Bus Valve Manifold

Number of I/O Modules

00 = 0	09 = 9
01 = 1	10 = 10
02 = 2	11 = 11
03 = 3	12 = 12
04 = 4	13 = 13
05 = 5	14 = 14
06 = 6	15 = 15
07 = 7	16 = 16
08 = 8	

Special Options

- STD = Standard
- DRM = DIN Rail Mounting

Modification

- 0 = Initial Release

Left Mounting

- D = w/ Sub-Bus Out
- R = w/ Terminating Resistor

FEATURES

- Solenoid-pilot actuated valves
- DIN plug-in solenoid and plug connector with or without indicator light available
- Housing made from aluminium alloy
- Lubricated or unlubricated operation
- In-line (pressure ports in valve body)



STANDARD VOLTAGES

DC (=) : 24V

TECHNICAL DATA

Valve Data	English	Metric
Cv	2.5	2.5
Flow Capacity	115 SCFM @ 80 PSIG upstream pressure to atmosphere	2362 NI/m @ 6 bar upstream/ 5 bar downstream
Pressure Range	60S Option: Vacuum to 150 PSIG	Vacuum to 10 bar
	000 Option: Vacuum to 116 PSIG	Vacuum to 8 bar
Pilot Pressure	26 to 145 PSIG	1.8 to 10 bar
Temperature Range	-10°F to 115°F	-23°C to 46°C

SPECIFICATIONS

Port Size	Valve Type	Function	Mounting	Wiring Option	Port Type	Options	Catalog Number
1/2	Single Solenoid Pilot, Spring Return W/Flush Non-Locking Override	2 Position, 4-Way	Line mounted	DIN 43650 form C, 8.0 mm Pin Spacing	G tap	Solenoid Pilot for use up to 10 Bar (150PSIG)	J34BA452CG60S40
	Double Solenoid Pilot, W/Flush Non-Locking Override	2 Position, 4-Way	Line mounted	DIN 43650 form C, 8.0 mm Pin Spacing	G tap	Solenoid Pilot for use up to 10 Bar (150PSIG)	J34BB452CG60S40
	Single Solenoid Pilot, Spring Return W/Flush Non-Locking Override	2 Position, 4-Way	Line mounted	DIN 43650 form C, 8.0 mm Pin Spacing	G tap	Solenoid Pilot for use up to 10 Bar (150PSIG)	J34BA452CG60S61
	Double Solenoid Pilot, W/Flush Non-Locking Override	2 Position, 4-Way	Line mounted	DIN 43650 form C, 8.0 mm Pin Spacing	G tap	Solenoid Pilot for use up to 10 Bar (150PSIG)	J34BB452CG60S61
	Single Solenoid Pilot, Spring Return W/Flush Non-Locking Override	2 Position, 4-Way	Line mounted	DIN 43650 form C, 8.0 mm Pin Spacing	G tap	External Pilot or Relay Supply To Unit	J34BA452CG14A61
	Single Solenoid Pilot, Spring Return W/Flush Non-Locking Override	2 Position, 4-Way	Line mounted	SELL PV	G tap	Low Wattage, up to 8 bar 1W, Flush Manual Override	J34BA452OG00000

APC-Rev.11(12/2016) per prospectus list in December 2016

FEATURES

- Tested in excess of 500 million cycles
- Maximum leakage rate:0.3 SCCM(Bubble Tight)
- All valves 100% factory tested
- Class A insulated coils
- Circuit board mountable
- Built in barbed fittings
- Oxygen Clean available
- Recommended for use with dry air, lubricated air, vacuum, non-corrosive, non-toxic, non-flammable dry gases
- Consult factory for other service application

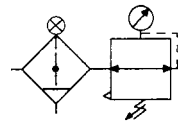


STANDARD VOLTAGES

DC (=) : 12V

SPECIFICATIONS

Series	Power	Body Style	Configuration	Port No. 3 Connection	Electrical Connection	Port No. 1	Port No. 3	Seal Material	Catalog Number
RB	1 Watt	0.125 Barb	3 Way	0.125 Barb (3 Way only)	Hard Wire (12"/26 AWG)	0.75 mm	1.25 mm	Oxygen Cleaned (Viton)	RMB3B6H35O



FEATURES

- Four convenient sizes
- 5 micron element standard
- Can be installed as individual or modular unit
- Non-rising knob
- Optional CircleVision™ sight bowl
- Optional metal bowl with sight glass
- Standard output pressure 0-125 PSIG
- Bowl seal held captive (22 and 32 Series)



SPECIFICATIONS

Model	Series	Element	Threads	Port Size	Options	Catalog Number
Particulate/Regulator	3.8 oz Bowl	5 Micron Element	G Tap (BSPP)	1/4	-	P22BG02
	3.8 oz Bowl			1/4	Gauge	P22BG02G
	3.8 oz Bowl			3/8	-	P22BG03
	3.8 oz Bowl			1/2	Auto Drain	P22BG04A
	3.8 oz Bowl			1/4	Auto Drain Gauge	P22BG02AG
	3.8 oz Bowl			3/8	Gauge	P22BG03G
	3.8 oz Bowl			1/2	Auto Drain Gauge	P22BG04AG
	3.8 oz Bowl			3/8	Auto Drain Gauge	P22BG03AG
	3.8 oz Bowl			1/2	-	P22BG04
	3.8 oz Bowl			1/2	Gauge	P22BG04G
	8.5 oz Bowl			1/2	-	P32BG04
	8.5 oz Bowl			1/2	Gauge	P32BG04G
	8.5 oz Bowl			3/4	-	P32BG06
	8.5 oz Bowl			3/4	Auto Drain	P32BG06A
	8.5 oz Bowl			3/4	Gauge	P32BG06G
	8.5 oz Bowl			1/2	Auto Drain Gauge	P32BG04AG
	8.5 oz Bowl			3/4	Auto Drain Gauge	P32BG06AG

FEATURES

- Solenoid pilot
- DIN plug-in solenoid indicator light
- Unlubricated or lubricated service
- In-line or manifold mounted

STANDARD VOLTAGES

DC (=) : 24V - 25V
AC (-) : 110V - 230V / 50 - 60 Hz



TECHNICAL DATA (YA)

Valve Data	English		Metric	
Cv	1/8 = 1.0	1/4 = 1.0	1/8 = 1.0	1/4 = 1.0
Flow Capacity	46 SCFM upstream pressure to atmosphere @ 80 PSIG		985 NI/m @6 bar upstream/5 bar downstream	
Main Valve Operating Pressure Range	28" HG. Vacuum to 150 PSIG		Vacuum to 10 bar	
Pilot Pressure Range: Internal and External	14.5 to 150 PSIG		1 to 10 bar	
Temperature Range: Solenoid Pilot (ambient)	-10°F to +115°F		-23°C to +46°C	

SPECIFICATIONS (YA)

Port Size	Valve Type	Function	Mounting	Wiring Option	Port Type	Options	Catalog Number
1/4	Single Solenoid Pilot, Spring Return W/Flush Locking Override	2 Position, 4-Way	Line Mounted (Manifold Mount With Adaptor)	DIN Plug-In AC Solenoid or Air Pilot	G tap	Standard (Class F Coil)	YA2BA4522G00030
	Single Solenoid Pilot, Spring Return W/Flush Locking Override	2 Position, 4-Way	Line Mounted (Manifold Mount With Adaptor)	DIN Plug-In AC Solenoid or Air Pilot	NPTF	Standard (Class F Coil)	YA2BA4522N00030
	Single Solenoid Pilot, Spring Return W/Flush Locking Override	2 Position, 4-Way	Line Mounted (Manifold Mount With Adaptor)	DIN Plug-In AC Solenoid or Air Pilot	G tap	Side Ports (Namur Plate Needed When 18 Option Is Used For Namur Interface)	YA2BA4522G18D40
	Single Solenoid Pilot, Spring Return W/Flush Locking Override	2 Position, 4-Way	Line Mounted (Manifold Mount With Adaptor)	DIN Plug-In AC Solenoid or Air Pilot	NPTF	Standard (Class F Coil)	YA2BA4522N00040
	Single Solenoid Pilot, Spring Return W/Flush Locking Override	2 Position, 4-Way	Line Mounted (Manifold Mount With Adaptor)	DIN Plug-In DC Solenoid	G tap	External Pilot Supply	YA2BA4524G14A61
	Single Solenoid Pilot, Spring Return W/Flush Locking Override	2 Position, 4-Way	Line Mounted (Manifold Mount With Adaptor)	DIN Plug-In DC Solenoid	G tap	Side Ports (Namur Plate Needed When 18D Option Is Used For Namur Interface)	YA2BA4524G18D61
	Single Solenoid Pilot, Spring Return W/Flush Locking Override	2 Position, 4-Way	Line Mounted (Manifold Mount With Adaptor)	DIN Plug-In AC Solenoid or Air Pilot	NPTF	Standard (Class F Coil)	YA2BA4524N00061
	Double Solenoid Pilot W/Flush Locking Override	2 Position, 4-Way	Line Mounted (Manifold Mount With Adaptor)	DIN Plug-In AC Solenoid or Air Pilot	G tap	Standard (Class F Coil)	YA2BB4522G00030
	Double Solenoid Pilot W/Flush Locking Override	3 Position, 4-Way Open Center	Line Mounted (Manifold Mount With Adaptor)	DIN Plug-In AC Solenoid or Air Pilot	G tap	Standard (Class F Coil)	YA2BB5522G00030
	Double Solenoid Pilot W/Flush Locking Override	3 Position, 4-Way Closed Center	Line Mounted (Manifold Mount With Adaptor)	DIN Plug-In AC Solenoid or Air Pilot	G tap	Standard (Class F Coil)	YA2BB6522G00030
	Single Solenoid Pilot, Spring Return W/Flush Locking Override	2 Position, 4-Way	Line Mounted (Manifold Mount With Adaptor)	DIN Plug-In AC Solenoid or Air Pilot	G tap	Standard (Class F Coil)	YA2BA4522G00040
	Double Solenoid Pilot W/Flush Locking Override	2 Position, 4-Way	Line Mounted (Manifold Mount With Adaptor)	DIN Plug-In AC Solenoid or Air Pilot	G tap	Standard (Class F Coil)	YA2BB4522G00040
	Double Solenoid Pilot W/Flush Locking Override	3 Position, 4-Way Open Center	Line Mounted (Manifold Mount With Adaptor)	DIN Plug-In AC Solenoid or Air Pilot	G tap	Standard (Class F Coil)	YA2BB5522G00040

SPECIFICATIONS (YA)

Port Size	Valve Type	Function	Mounting	Wiring Option	Port Type	Options	Catalog Number
1/4	Double Solenoid Pilot W/Flush Locking Override	3 Position, 4-Way Closed Center	Line Mounted (Manifold Mount With Adaptor)	DIN Plug-In AC Solenoid or Air Pilot	G tap	Standard (Class F Coil)	YA2BB6522G00040
	Double Solenoid Pilot W/Flush Locking Override	2 Position, 4-Way		DIN Plug-In AC Solenoid or Air Pilot	G tap	Side Ports (Namur Plate Needed When 18D Option Is Used For Namur Interface)	YA2BB4522G18D40
	Single Solenoid Pilot, Spring Return W/Flush Locking Override	2 Position, 4-Way		DIN Plug-In DC Solenoid	G tap	Standard (Class F Coil)	YA2BA4524G00061
	Double Solenoid Pilot W/Flush Locking Override	2 Position, 4-Way		DIN Plug-In DC Solenoid	G tap	Standard (Class F Coil)	YA2BB4524G00061
	Double Solenoid Pilot W/Flush Locking Override	2 Position, 4-Way		DIN Plug-In DC Solenoid	G tap	External Pilot Supply	YA2BB4524G14A61
	Double Solenoid Pilot W/Flush Locking Override	2 Position, 4-Way		DIN Plug-In DC Solenoid	G tap	Side Ports (Namur Plate Needed When 18D Option Is Used For Namur Interface)	YA2BB4524G18D61
	Double Solenoid Pilot W/Flush Locking Override	3 Position, 4-Way Open Center		DIN Plug-In DC Solenoid	G tap	Standard (Class F Coil)	YA2BB5524G00061
	Double Solenoid Pilot W/Flush Locking Override	3 Position, 4-Way Closed Center		DIN Plug-In DC Solenoid	G tap	Standard (Class F Coil)	YA2BB6524G00061
	Double Solenoid Pilot W/Flush Locking Override	2 Position, 4-Way		DIN Plug-In DC Solenoid	NPTF	Standard (Class F Coil)	YA2BB4524N00061
	Double Air Pilot	2 Position, 4-Way		DIN Plug-In AC Solenoid or Air Pilot	NPTF	Standard (Class F Coil)	YA2PP4522N00000
1/8	Single Solenoid Pilot, Spring Return W/Flush Locking Override	2 Position, 4-Way		DIN Plug-In AC Solenoid or Air Pilot	G tap	Standard (Class F Coil)	YA1BA4522G00030
	Double Solenoid Pilot W/Flush Locking Override	2 Position, 4-Way		DIN Plug-In AC Solenoid or Air Pilot	G tap	Standard (Class F Coil)	YA1BB4522G00030
	Double Solenoid Pilot W/Flush Locking Override	3 Position, 4-Way Open Center		DIN Plug-In AC Solenoid or Air Pilot	G tap	Standard (Class F Coil)	YA1BB5522G00030
	Double Solenoid Pilot W/Flush Locking Override	3 Position, 4-Way Closed Center		DIN Plug-In AC Solenoid or Air Pilot	G tap	Standard (Class F Coil)	YA1BB6522G00030
	Single Solenoid Pilot, Spring Return W/Flush Locking Override	2 Position, 4-Way		DIN Plug-In AC Solenoid or Air Pilot	G tap	Standard (Class F Coil)	YA1BA4522G00040
	Double Solenoid Pilot W/Flush Locking Override	2 Position, 4-Way		DIN Plug-In AC Solenoid or Air Pilot	G tap	Standard (Class F Coil)	YA1BB4522G00040
	Double Solenoid Pilot W/Flush Locking Override	3 Position, 4-Way Open Center		DIN Plug-In AC Solenoid or Air Pilot	G tap	Standard (Class F Coil)	YA1BB5522G00040
	Double Solenoid Pilot W/Flush Locking Override	3 Position, 4-Way Closed Center		DIN Plug-In AC Solenoid or Air Pilot	G tap	Standard (Class F Coil)	YA1BB6522G00040
	Single Solenoid Pilot, Spring Return W/Flush Locking Override	2 Position, 4-Way		DIN Plug-In DC Solenoid	G tap	Standard (Class F Coil)	YA1BA4524G00061
	Double Solenoid Pilot W/Flush Locking Override	2 Position, 4-Way	DIN Plug-In DC Solenoid	G tap	Standard (Class F Coil)	YA1BB4524G00061	

SPECIFICATIONS (YA)

Port Size	Valve Type	Function	Mounting	Wiring Option	Port Type	Options	Catalog Number
1/8	Double Solenoid Pilot W/Flush Locking Override	3 Position, 4-Way Open Center	Line Mounted (Manifold Mount With Adaptor)	DIN Plug-In DC Solenoid	G tap	Standard (Class F Coil)	YA1BB5524G00061
	Double Solenoid Pilot W/Flush Locking Override	3 Position, 4-Way Closed Center		DIN Plug-In DC Solenoid	G tap	Standard (Class F Coil)	YA1BB6524G00061

TECHNICAL DATA (YB)

Valve Data	English		Metric	
Cv	1/4 = 1.7	3/8 = 1.7	1/4 = 1.7	3/8 = 1.7
Flow Capacity	79 SCFM upstream pressure to atmosphere @ 80 PSIG		1674 NI/m @ 6 bar upstream/5 bar downstream	
Main Valve Operating Pressure Range	28" HG. Vacuum to 150 PSIG		Vacuum to 10 bar	
Pilot Pressure Range: Internal and External	14.5 to 150 PSIG		1 to 10 bar	
Temperature Range: Solenoid Pilot (ambient)	-10°F to +115°F		-23°C to +46°C	

SPECIFICATIONS (YB)

Port Size	Valve Type	Function	Mounting	Wiring Option	Port Type	Options	Catalog Number
1/4	Single Solenoid Pilot, Spring Return W/Flush Locking Override	2 Position, 4-Way	Line Mounted (Manifold Mount With Adaptor)	DIN Plug-In AC Solenoid or Air Pilot	G tap	Standard (Class F Coil)	YB2BA4522G00030
	Single Solenoid Pilot, Spring Return W/Flush Locking Override			DIN Plug-In AC Solenoid or Air Pilot		Standard (Class F Coil)	YB2BA4522G00040
	Single Solenoid Pilot, Spring Return W/Flush Locking Override			DIN Plug-In DC Solenoid		Standard (Class F Coil)	YB2BA4524G00061
	Single Solenoid Pilot, Spring Return W/Flush Locking Override			DIN Plug-In DC Solenoid		External Pilot Supply	YB2BA4524G14A61
	Single Solenoid Pilot, Spring Return W/Flush Locking Override			DIN Plug-In DC Solenoid		Dry Assembly	YB2BA4524G12B61
	Double Solenoid Pilot W/Flush Locking Override			DIN Plug-In AC Solenoid or Air Pilot		Standard (Class F Coil)	YB2BB4522G00030
	Double Solenoid Pilot W/Flush Locking Override			DIN Plug-In AC Solenoid or Air Pilot		Standard (Class F Coil)	YB2BB4522G00040
	Double Solenoid Pilot W/Flush Locking Override			DIN Plug-In DC Solenoid		Standard (Class F Coil)	YB2BB4524G00061
3/8	Single Solenoid Pilot, Spring Return W/Flush Locking Override			DIN Plug-In AC Solenoid or Air Pilot		Standard (Class F Coil)	YB3BA4522G00030
	Single Solenoid Pilot, Spring Return W/Flush Locking Override			DIN Plug-In AC Solenoid or Air Pilot		Standard (Class F Coil)	YB3BA4522G00040
	Single Solenoid Pilot, Spring Return W/Flush Locking Override			DIN Plug-In DC Solenoid		Standard (Class F Coil)	YB3BA4524G00061
	Double Solenoid Pilot W/Flush Locking Override			DIN Plug-In AC Solenoid or Air Pilot		Standard (Class F Coil)	YB3BB4522G00030
	Double Solenoid Pilot W/Flush Locking Override			DIN Plug-In AC Solenoid or Air Pilot		Standard (Class F Coil)	YB3BB4522G00040
	Double Solenoid Pilot W/Flush Locking Override			DIN Plug-In DC Solenoid		Standard (Class F Coil)	YB3BB4524G00061

APC-Rev.11(12/2016) per prospectus list in December 2016

SOLENOID VALVES

direct acting
brass or stainless steel bodies
G 1/8

Series
L172

FEATURES

- Direct acting solenoid valve.
- Suitable to shut off liquid and gaseous fluids (verify the compatibility of fluid with material in contact).

STANDARD VOLTAGES

DC (=) : 24V

AC (~) : 115V - 120V - 230V / 50 - 60 Hz



SPECIFICATIONS

Port Size ISO 228	Orifice Size (mm)	Differential Pressure (bar)						Kv (m ³ /h)	Series and Type			Power Absorption				Sealings	Weight (kg)	
		Δp Min	Δp Max				AC (VA)					DC W						
			Gases		Liquids		Inrush VA		Holding									
			AC	DC	AC	DC			VA	VA	W							
G1/8	1.2	0	28	20	28	20	0.05	Stainless steel	L172V07	ZB12AX	12	6	4	5.5	FPM	0.145		
	1.6		20	12	20	12											0.08	
	2		15	6	15	6												0.11
	2.4		12	4	12	4												
G1/8	1.2	0	28	20	28	20	0.05	Brass	L172V03	ZB12AX	12	6	4	5.5	FPM	0.16		
	1.6		20	12	20	12											0.08	
	2		15	6	15	6												0.11
	2.4		12	4	12	4												

SOLENOID VALVES

direct acting
brass or stainless steel bodies
G 1/4

Series
L176

FEATURES

- Direct acting solenoid valve.
- Suitable to shut off liquid and gaseous fluids (verify the compatibility of fluid with material in contact).

STANDARD VOLTAGES

DC (=) : 24V

AC (-) : 115V - 120V - 230V / 50 - 60 Hz



SPECIFICATIONS

Port Size ISO 228	Orifice Size (mm)	Differential Pressure (bar)				Kv (m ³ /h)	Series and Type			Power Absorption				Sealings	Weight (kg)	
		Δp Min	Δp Max				Body	Valve	Coil	AC (VA)			DC W			
			Gases		Liquids					Inrush VA	Holding					
			AC	DC	AC						DC	VA				W
G1/4	2.4	0	12	4	12	4	0.16	Brass	L176V03	ZB12AX	12	6	4	5.5	FPM	0.16
	1.6		20	12	20	12	0.08	Stainless steel	L176V07							
	2.4		12	4	12	4	0.16									

FEATURES

- Solenoid valve suitable for cutting off the flow of a fluid by pinch
- For sterile, aseptic, physiological and food applications
- No turbulence or gap when cutting off flow by pinch
- Silent operation
- Full bore output flow compared with a traditional solenoid valve
- Manual pulse control for fitting tube
- A single component in contact with the fluid, i.e. the tube
- Bi-directional flow
- The tubings are included in our supply, 30cm length

STANDARD VOLTAGES

DC (=) : 24V

AC (-) : 230V / 50 - 60 Hz



SPECIFICATIONS

Port Size ISO 228	Orifice Size (mm)	Differential Pressure (bar)						Kv (m ³ /h)	Series and Type			Power Absorption				Weight Δp (kg)	
		Δp (kg) min	Δp Max				Body		Valve	Coil	AC (VA)			DC W			
			Gases		Liquids						Inrush VA	Holding					
			AC	DC	AC	DC						VA	W				
1/2	13.5	0.35	16 (12)	16 (12)	16 (12)	16 (12)	3.8	Brass	L182D01	ZB12AX	12	6	4	5.5	0.38		
3/4	18		12 (10)	12 (10)	12 (10)	12 (10)										5	0.52
1	24		12 (10)	12 (10)	12 (10)	12 (10)											

SOLENOID VALVES

direct acting
brass or stainless steel bodies
G 1/8

Series
L372

FEATURES

- Direct acting solenoid valve.
- Suitable to shut off liquid and gaseous fluids (verify the compatibility of fluid with material in contact).

STANDARD VOLTAGES

DC (=) : 24V

AC (-) : 115V - 120V - 230V / 50 - 60 Hz



SPECIFICATIONS

Port Size ISO 228	Orifice Size (mm)		Differential Pressure (bar)				Kv (m ³ /h)		Series and Type			Power Absorption				Sealings	Weight (kg)	
			Δp Min	Δp Max								AC (VA)			DC W			
				Gases		Liquids		Inrush VA	Holding VA W									
	1↔2	1↔3		c.a.	c.c.	c.a.	c.c.	1↔2	1↔3	Body	Valve	Coil						
NC - Normally closed																		
G1/8	1.2	1.2	0	15	15	15	15	0.05	0.05	Brass	L372V03C	ZB12AX	12	6	4	5.5	FPM	0.155
	1.6			10	10	10	10	0.08										
	2			5	5	5	5	0.1										
	2.4			4	4	4	4	0.13										
	1.2			15	15	15	15	0.05		Stainless steel	L372V07C	ZB12AX	12	6	4	5.5	FPM	0.14
	1.6			10	10	10	10	0.08										
	2			5	5	5	5	0.1										
	2.4			4	4	4	4	0.13										

SOLENOID VALVES

direct acting
brass or stainless steel bodies
G 1/4

Series
L376

FEATURES

- Direct acting solenoid valve.
- Suitable to shut off liquid and gaseous fluids (verify the compatibility of fluid with material in contact).

STANDARD VOLTAGES

DC (=) : 24V

AC (-) : 115V - 120V - 230V / 50 - 60 Hz



SPECIFICATIONS

Port Size ISO 228	Orifice Size (mm)		Differential Pressure (bar)				Kv (m ³ /h)		Series and Type			Power Absorption				Sealings	Weight (kg)	
			Δp Max									AC (VA)		DC W				
	Δp Min	Gases		Liquids		Inrush VA	Holding											
		1↔2	1↔3	c.a.	c.c.		c.a.	c.c.	VA	VA	W							
G1/4	2.4	1.2	0	4	4	4	4	0.14	0.05	Brass L376V03C	ZB12AX	12	6	4	5.5	FPM	0.205	
	1.6	1.2		10	10	10	10	0.08	0.05									Stainless steel L376V07C
	2.4	1.2		4	4	4	4	0.14	0.05									

ASCO Numatics China Contacts

Shanghai Office

Rm 401A, 4th Floor, Emerson Building,
1582 Gu Mei Road, Xu Hui District,
200233 Shanghai, P. R. China
Tel: (86 21) 3338 7300
Fax: (86 21) 3338 7299

Guangzhou Office

Unit 2107, Times Property Center.
No.410-412 Dongfeng Road Central.
510030 Guangzhou, P. R. China
Tel: (86 20) 2883 8944
Fax: (86 20) 2883 8901

Qingdao Office

Rm.901, Zhong Tian Heng Tower,
No. 66 Nanjing Road,
266071 Qingdao, P. R. China
Tel: (86 532) 8667 7772
Fax: (86 532) 8667 7711

Wuhan Office

853# 8/F Ping An Financial Center,
1628 Zhong Shan Avenue, Jiangan District,
430014 Wuhan, P. R. China
Tel: (86 27) 8359 0632
Fax: (86 27) 8359 0633

Shenzhen Office

Rm 912-913, Xinhua Insurance Building,
171#, Mintian Road, Futian District,
518048 Shenzhen, P. R. China
Tel: (86 755) 8287 3809
Fax: (86 755) 8287 3805

Nanjing Office

10B, IFC, No.1, Hanzhong Rd,
Qinhuai District,
210000 Nanjing, P.R.China
Tel: (86 25) 8586 0178
Fax: (86 25) 8586 0160

Beijing Office

Rm1003 Gateway Building,
10 Yabao Road, Chaoyang District,
100020 Beijing, P. R. China
Tel: (86 10) 8563 1122
Fax: (86 10) 8561 5224

Chengdu Office

S-10-15 Lippon Tower,
No.62 North Kehua Road,
610041 Chengdu, P. R. China
Tel: (86 28) 6235 0101
Fax: (86 28) 8662 5854

Xian Office

Rm 1502, Building A, Sea Star City Plaza,
No.37 Keji Road, High-tech District,
710000 xian, P. R. China
Tel: (86 29) 8450 8081
Fax: (86 29) 8450 8083

Jinan Office

Rm B801-B802, 8/F Inzone Garland Hotel,
No.23377 Jing Shi Road,
Jinan, P. R. China
Tel: (86 531) 8591 0855
Fax: (86 531) 5891 3855

Shenyang Office

Room 1010, 10/F Tianwen Buiding,
No.5 Bererzhong Road, Tiexi District
110020 Shenyang, P. R. China
Tel: (86 24) 6469 0492
Fax: (86 24) 6469 0493



www.asco.com

ASCO XIAN • ASCO WUHAN • ASCO CHANGSHA • ASCO HUHEHAOTE
ASCO JINAN • ASCO HANGZHOU • ASCO NANJING • ASCO NANNING • ASCO NINGBO
ASCO SHENYANG • ASCO SHENZHEN • ASCO TAIYUAN • ASCO TIANJIN • ASCO XIAMEN
ASCO XIANGGANG • ASCO ZHENZHOU • ASCO WUXI • ASCO DALIAN • ASCO CHONGQING