



Dimensional Data

MGS Reducer Optional Output Flange For “F” Round Output Flange Units Only

(Note: optional flanges are not available on all sizes)

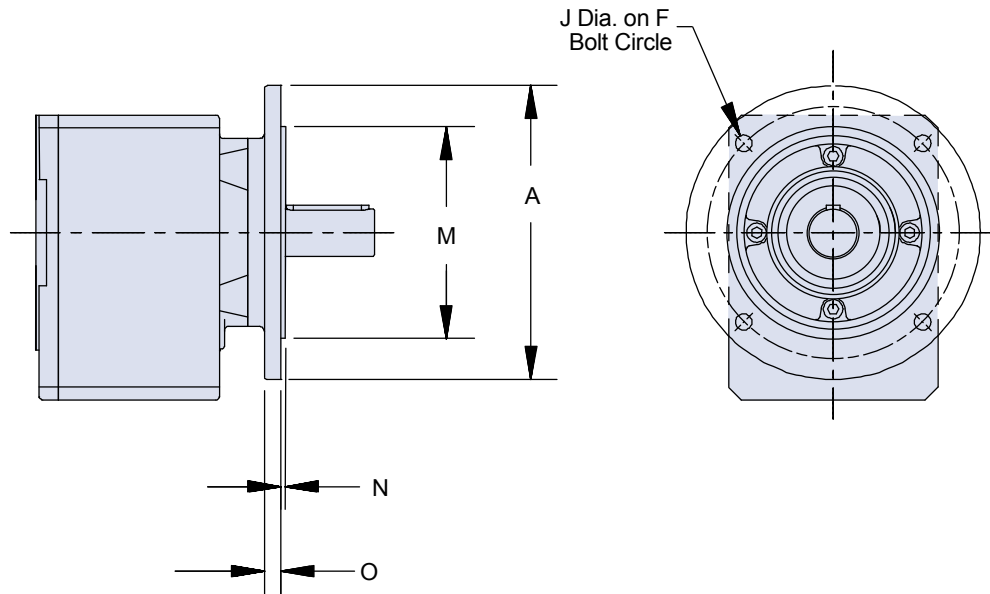


Table 1 Dimensions (mm)

Unit	Accommodate NEMA C-Frame Motors	Flange Size A	F	J	M *	N	O
C002	050	120	100	7	80 _{j6}	3	10
	140	140	115	9	90 _{j6}	3	10
C102/C103	050	140	115	9	95 _{j6}	3.5	8
	140	160	130	9	110 _{j6}	3.5	10
C202/C203	180	160	130	9	110 _{j6}	3.5	10
		250	215	14	180 _{j6}	4	12
C302/C303	050	160	130	9	110 _{j6}	3.5	10
	140	200	265	11	130 _{j6}	3.5	12
C402/C403	180	200	165	11	130 _{j6}	3.5	14
	210	300	265	14	230 _{j6}	4	14
C502/C503	180	250	215	14	180 _{j6}	4	14
	210						
C812/C813	250	350	300	18	250 _{h6}	5	18
	280	450	400	18	350 _{h6}	5	20

* h6, j6 = existing values

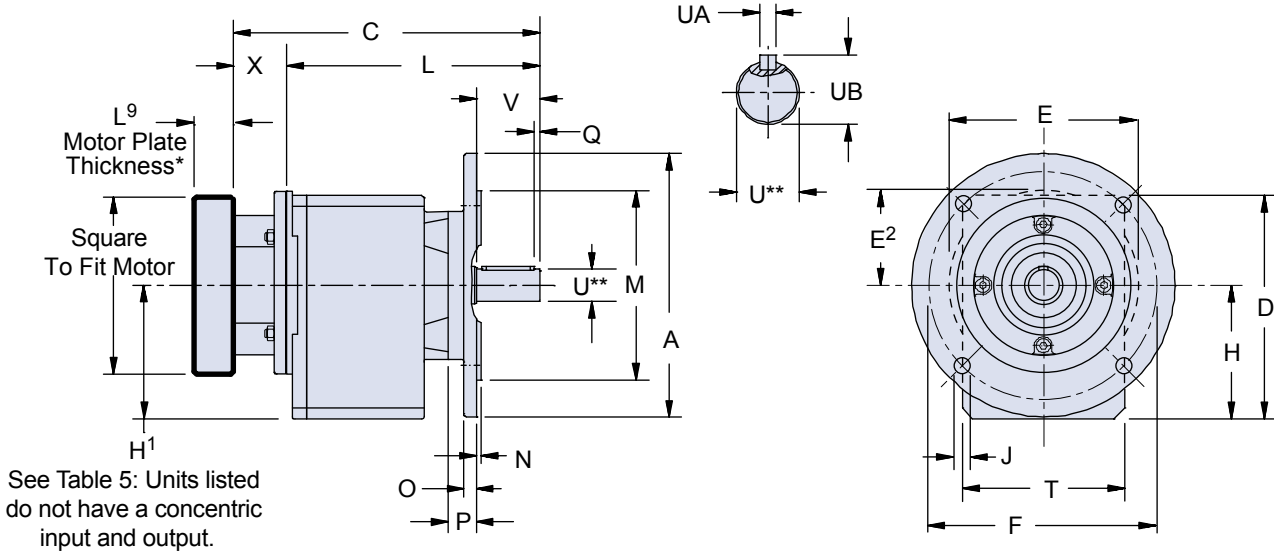
Please contact STOBBER for ordering assistance.

C
 INLINE –Solid Shaft Output

“F” Round Output Flange —

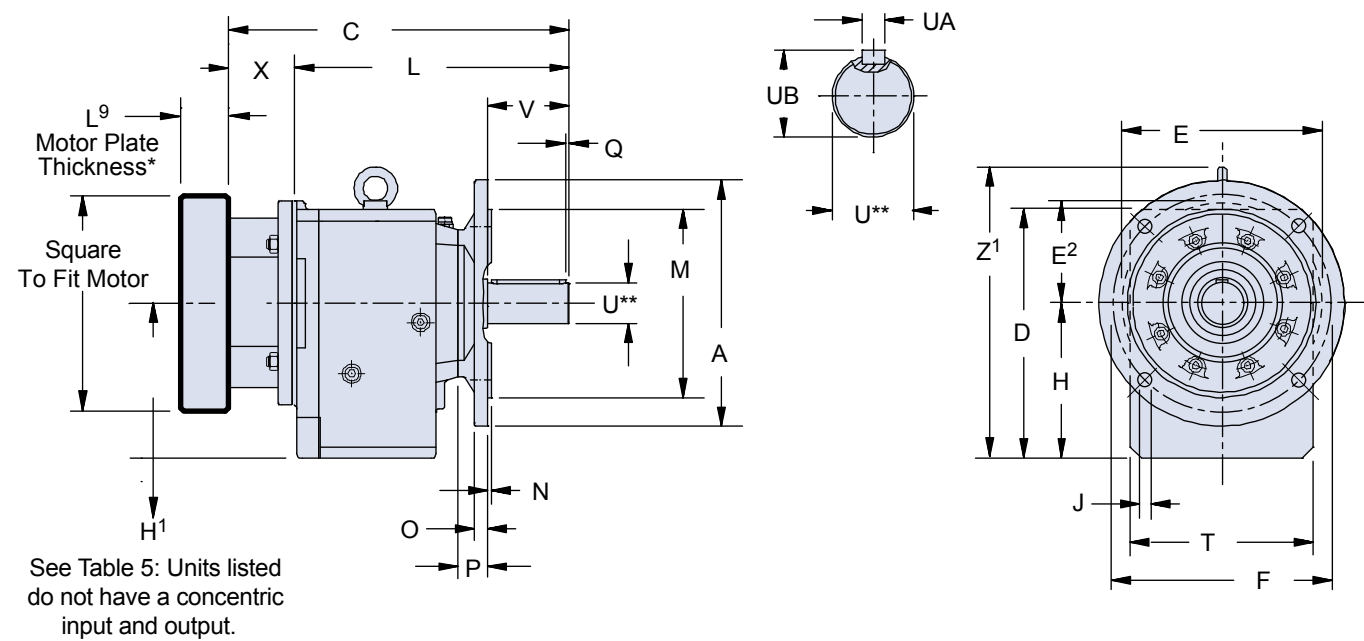
Optional MGS Reducer Output Flange available on most models, see page 91 for details.

C002F thru C503F



* See Motor Mounting Plate Option, page 66 for details.
** For optional output shaft options, see page 65.

C612F thru C913F



* See Motor Mounting Plate Option, page 66 for details.
** For optional output shaft options, see page 65.

NOTE: Instead of 4 holes as shown in the drawing, the C913 output flange has 8 “J” dia. mounting holes on “F” bolt circle (located 22.5° from horizontal).



Dimensional Data

Table 1 Dimensions (mm)

Unit	A	D	F	H	J	M *	N	O	P	Q	T	V	Z ¹
C002	160	141	130	79	9	110 _{j6}	3	10	18	3	97	40	–
C102/C103	200	175	165	100	11	130 _{j6}	3.5	12	21	5	130	50	–
C202/C203	200	192	165	112 ¹⁾	11	130 _{j6}	3.5	12	27	5	142	60	–
C302/C303	250	212	215	127 ¹⁾	14	180 _{j6}	4	12	27	5	154	60	–
C402/C403	250	242.5	215	142.5	14	180 _{j6}	4	14	28	5	178	80	–
C502/C503	300	286	265	166	14	230 _{j6}	4	16	29	5	195	80	–
C612/C613	300	310	265	195 ¹⁾	14	230 _{j6}	4	17	36	5	225	100	362
C712/C713	350	371	300	231 ¹⁾	18	250 _{h6}	5	18	44	5	265	120	432
C812/C813	400	445	350	285	18	300 _{h6}	5	20	45	5	310	140	506
C912/C913	450	524	400	334	18	350 _{h6}	5	23	50	5	365	170	594

¹⁾ See Table 5

Table 2 Metric output available on request.

Unit	Standard Shaft - inches			Optional Shaft - mm		
	U _{h6} *	UA	UB	U *	UA	UB
C002	0.750	3/16 x 3/16 x 1–7/32	0.83	20 _{k6}	A6x6x32	22.5
C102/C103	1.000	1/4 x 1/4 x 1–9/16	1.11	25 _{k6}	A8x7x40	28
C202/C203	1.250	1/4 x 1/4 x 1–15/16	1.36	30 _{k6}	A8x7X50	33
C302/C303	1.250	1/4 x 1/4 x 1–15/16	1.36	30 _{k6}	A8x7X50	33
C402/C403	1.625	3/8 x 3/8 x 2–7/8	1.79	40 _{k6}	A12x8X70	43
C502/C503	1.625	3/8 x 3/8 x 2–7/8	1.79	40 _{k6}	A12x8X70	43
C612/C613	2.125	1/2 x 1/2 x 3–5/32	2.35	50 _{k6}	A14x9x90	53.5
C712/C713	2.375	5/8 x 5/8 x 3–15/16	2.65	60 _{m6}	A18x11x100	64
C812/C813	2.875	3/4 x 3/4 x 4–5/16	3.21	70 _{m6}	A20x12x125	74.5
C912/C913	3.625	7/8 x 7/8 x 5–1/2	4.01	90 _{m6}	A25x14x140	95

Table 3 Motor Adapter Dimensions (mm)

Motor Adapter	Motor Shaft D ⁶ Max. ²⁾	Thickness L ⁹ Min. ³⁾	E	E ²	X	Wt. lbs.
MT10	19	21	140	70	40	5
MT20	24	24	160	80	50	8
MT30	38	25	200	100	60	12
MT40	48	33	250	125	89	18
MT50	60	43	300	150	81.5	16

²⁾ If an adapter bushing is required it will be supplied as a component of the motor mounting plate.

³⁾ Motor plate maximum thickness (L⁹) will vary with motor shaft length but will not be less than shown.

Table 4 Dimensions (mm)

Unit	MT10		MT20		MT30		MT40		MT50		Approx. Wt.(lbs.)
	C	L	C	L	C	L	C	L	C	L	
C002	194	154	208	158	—	—	—	—	—	—	18
C102	227	187	241	191	253	193	—	—	—	—	29
C103	264	224	—	—	—	—	—	—	—	—	34
C202	255	215	269	219	281	221	—	—	—	—	38
C203 ¹⁾	292	252	312	262	—	—	—	—	—	—	45
C302	—	—	288	238	300	240	332	243	—	—	49
C303 ¹⁾	311	271	331	281	—	—	—	—	—	—	56
C402	—	—	335.5	285.5	347.5	287.5	379.5	290.5	—	—	71
C403	—	—	378.5	328.5	—	—	—	—	—	—	78
C502	—	—	357	307	369	309	401	312	407.5	326	95
C503	—	—	400	350	—	—	—	—	—	—	111
C612 ¹⁾	—	—	—	—	393	333	425	336	430.5	349	115
C613 ¹⁾	—	—	—	—	425	375	455	395	—	—	159
C712	—	—	—	—	446	386	477	388	482.5	401	199
C713 ¹⁾	—	—	—	—	507	447	548	459	—	—	221
C812	—	—	—	—	—	—	544	455	549.5	468	322
C813	—	—	—	—	574	514	615	526	—	—	342
C912	—	—	—	—	—	—	—	—	616.5	535	596
C913	—	—	—	—	—	—	682	593	—	—	678

¹⁾ See Table 5

* h6, j6, k6, m6 = existing values

For approximate weight, add adapter weight from Table 3 and base module weight from Table 4.

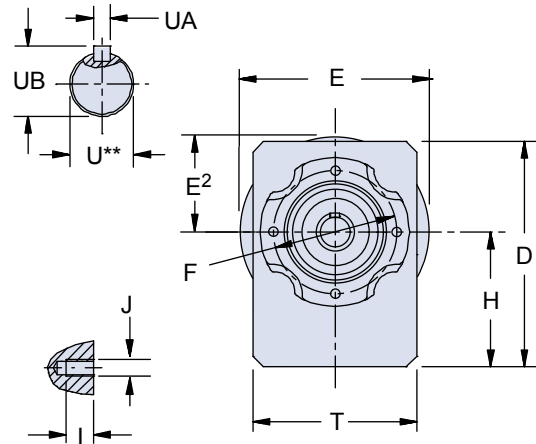
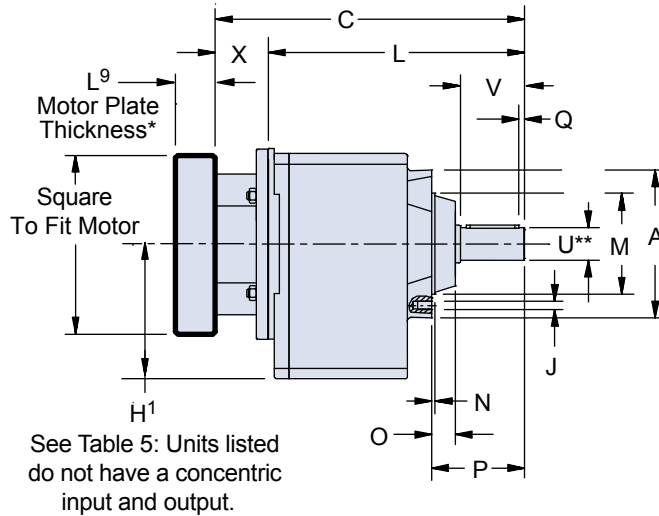
Table 5 Input Dimensions (mm)

Unit	H ¹			
	MT20	MT30	MT40	MT50
C203	75.5	—	—	—
C303	90	—	—	—
C612	—	189	189	189
C613	—	—	189	—
C713	—	—	250	—

Units shown in Table 5 do not have a concentric input and output.

“G” Tapped Holes Around Output —

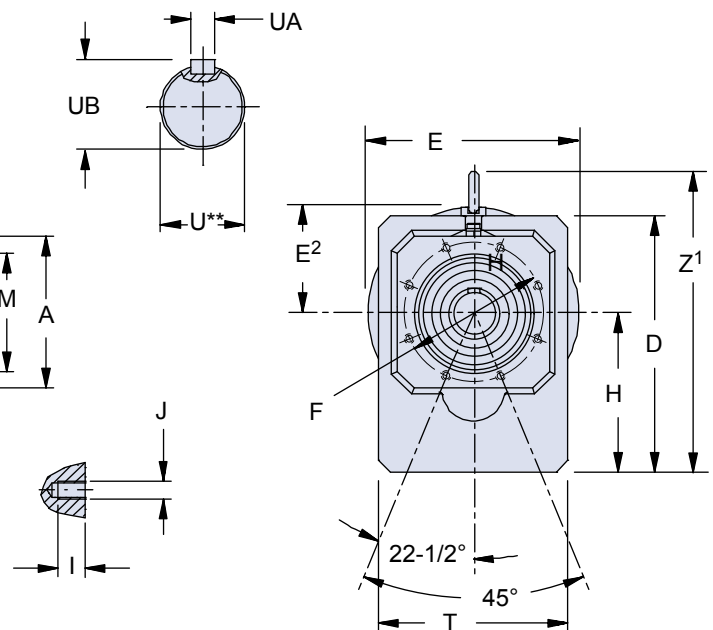
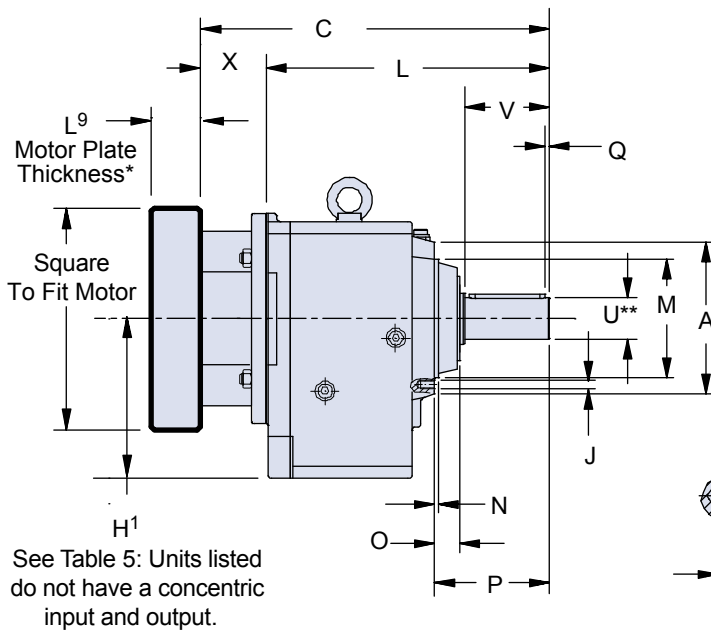
C002G thru C503G



† NOTE: Instead of 4 holes as shown in the drawing, the C502/C503 has 8 holes located as shown on drawing for C612G – C913G.

* See Motor Mounting Plate Option, page 66 for details.
** For optional output shaft options, see page 65.

C612G thru C913G



* See Motor Mounting Plate Option, page 66 for details.
** For optional output shaft options, see page 65.



Dimensional Data

Table 1 Dimensions (mm)

Unit	A	D	F	H	I	J	M _{J6}	N	O	P	Q	T	V	Z ¹
C002	87	141	75	79	10	M6x1	55	3	14	58	3	97	40	–
C102/C103	120	175	100	100	13	M6x1	80	3	17	71	5	130	50	–
C202/C203	140	192	115	112 ¹⁾	13	M6x1	95	3	22	87	5	142	60	–
C302/C303	140	212	115	127 ¹⁾	13	M8x1.25	95	3	22	87	5	154	60	–
C402/C403	160	242.5	130	142.5	16	M8x1.25	110	3.5	22	108	5	178	80	–
C502/C503	192	286	165	166	16	M10x1.5 [†]	130	3.5	23	109	5	195	80	–
C612/C613	180	310	165	195 ¹⁾	16	M10x1.5	140	5	30	136	5	225	100	362
C712/C713	195	371	185	231 ¹⁾	19	M12x1.75	155	8	37	164	5	265	120	432
C812/C813	226	445	215	285	19	M12x1.75	185	5	37	185	5	310	140	506
C912/C913	280	524	265	334	26	M16x2	230	5	42	220	5	365	170	594

¹⁾ See Table 5

Table 2 Metric output available on request.

Unit	Standard Shaft - inches			Optional Shaft - mm		
	U _{h6}	UA	UB	U	UA	UB
C002	0.750	3/16 x 3/16 x 1–7/32	0.83	20 _{k6}	A6x6x32	22.5
C102/C103	1.000	1/4 x 1/4 x 1–9/16	1.11	25 _{k6}	A8x7x40	28
C202/C203	1.250	1/4 x 1/4 x 1–15/16	1.36	30 _{k6}	A8x7x50	33
C302/C303	1.250	1/4 x 1/4 x 1–15/16	1.36	30 _{k6}	A8x7x50	33
C402/C403	1.625	3/8 x 3/8 x 2–7/8	1.79	40 _{k6}	A12x8x70	43
C502/C503	1.625	3/8 x 3/8 x 2–7/8	1.79	40 _{k6}	A12x8x70	43
C612/C613	2.125	1/2 x 1/2 x 3–5/32	2.35	50 _{k6}	A14x9x90	53.5
C712/C713	2.375	5/8 x 5/8 x 3–15/16	2.65	60 _{m6}	A18x11x100	64
C812/C813	2.875	3/4 x 3/4 x 4–5/16	3.21	70 _{m6}	A20x12x125	74.5
C912/C913	3.625	7/8 x 7/8 x 5–1/2	4.01	90 _{m6}	A25x14x140	95

Table 3 Motor Adapter Dimensions (mm)

Motor Adapter	Motor Shaft D ⁶ Max. ²⁾	Thickness ³⁾ L ⁹ Min.	E	E ²	X	Wt. lbs.
MT10	19	21	140	70	40	5
MT20	24	24	160	80	50	8
MT30	38	25	200	100	60	12
MT40	48	33	250	125	89	18
MT50	60	43	300	150	81.5	16

²⁾ If an adapter bushing is required it will be supplied as a component of the motor mounting plate.

³⁾ Motor plate maximum thickness (L⁹) will vary with motor shaft length but will not be less than shown.

Table 4 Dimensions (mm)

Unit	MT10		MT20		MT30		MT40		MT50		Approx. Wt.(lbs.)
	C	L	C	L	C	L	C	L	C	L	
C002	194	154	208	158	—	—	—	—	—	—	18
C102	227	187	241	191	253	193	—	—	—	—	29
C103	264	224	—	—	—	—	—	—	—	—	34
C202	255	215	269	219	281	221	—	—	—	—	38
C203¹⁾	292	252	312	262	—	—	—	—	—	—	45
C302	—	—	288	238	300	240	332	243	—	—	49
C303¹⁾	311	271	331	281	—	—	—	—	—	—	56
C402	—	—	335.5	285.5	347.5	287.5	379.5	290.5	—	—	71
C403	—	—	378.5	328.5	—	—	—	—	—	—	78
C502	—	—	357	307	369	309	401	312	407.5	326	95
C503	—	—	400	350	—	—	—	—	—	—	111
C612¹⁾	—	—	—	—	393	333	425	336	430.5	349	115
C613¹⁾	—	—	—	—	425	375	455	395	—	—	159
C712	—	—	—	—	446	386	477	388	482.5	401	199
C713¹⁾	—	—	—	—	507	447	548	459	—	—	221
C812	—	—	—	—	—	—	544	455	549.5	468	322
C813	—	—	—	—	574	514	615	526	—	—	342
C912	—	—	—	—	—	—	—	—	616.5	535	596
C913	—	—	—	—	—	—	682	593	—	—	678

¹⁾ See Table 5

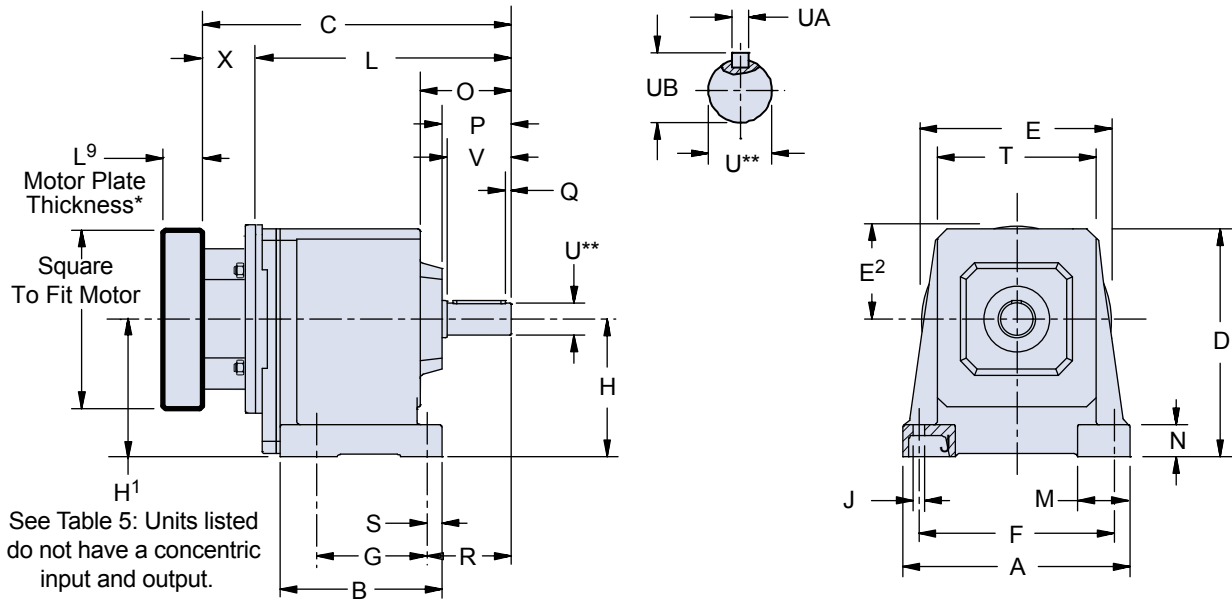
For approximate weight, add adapter weight from Table 3 and base module weight from Table 4.

Table 5 Input Dimensions (mm)

Unit	H ¹			
	MT20	MT30	MT40	MT50
C203	75.5	—	—	—
C303	90	—	—	—
C612	—	189	189	189
C613	—	—	189	—
C713	—	—	250	—

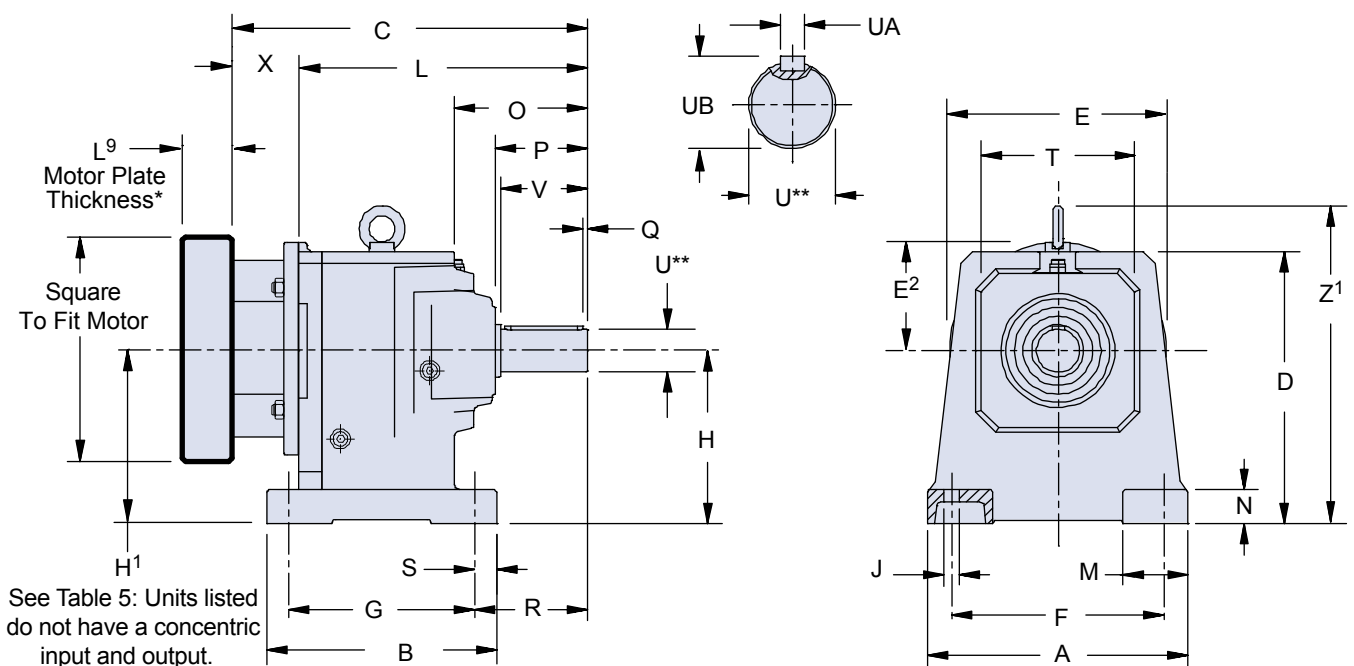
“N” Foot Mount —

C002N thru C503N



* See Motor Mounting Plate Option, page 66 for details.
** For optional output shaft options, see page 65.

C612N thru C913N



* See Motor Mounting Plate Option, page 66 for details.
** For optional output shaft options, see page 65.



Dimensional Data

C

INLINE – Solid Shaft Output

Table 1 Dimensions (mm)

Unit	A	B	D	F	G	H	J	M	N	O	P	Q	R	S	T	V	Z ¹
C002	132	95	144	110	62	82	7	35	20	57	44	3	55	11	92	40	—
C102/C103	176	118	177	150	70	102	9	42	25	69	54	5	67	13	124	50	—
C202/C203	200	135	195	170	85	115 ¹⁾	11	50	30	86	65	5	79	14	138	60	—
C302/C303	215	154	215	185	105	130 ¹⁾	11	50	30	85	65	5	79	14	150	60	—
C402/C403	255	180	245	220	110	145	14	60	35	106	86	5	105	19	175	80	—
C502/C503	290	197	290	245	130	170	18	70	40	107	86	5	108	22	192	80	—
C612/C613	300	265	315	245	215	200 ¹⁾	18	75	40	153	106	5	130	25	225	100	367
C712/C713	365	285	375	300	235	235 ¹⁾	18	90	50	185	127	5	163	25	265	120	436
C812/C813	435	360	450	340	300	290	22	95	55	218	148	5	190	29	310	140	511
C912/C913	510	410	530	400	340	340	26	110	60	256	178	5	222	34	365	170	600

¹⁾ See Table 5

Table 2 Metric output available on request.

Unit	Standard Shaft - inches			Optional Shaft - mm		
	U _{h6} *	UA	UB	U *	UA	UB
C002	0.750	3/16 x 3/16 x 1-7/32	0.83	20 _{k6}	A6x6x32	22.5
C102/C103	1.000	1/4 x 1/4 x 1-9/16	1.11	25 _{k6}	A8x7x40	28
C202/C203	1.250	1/4 x 1/4 x 1-15/16	1.36	30 _{k6}	A8x7x50	33
C302/C303	1.250	1/4 x 1/4 x 1-15/16	1.36	30 _{k6}	A8x7x50	33
C402/C403	1.625	3/8 x 3/8 x 2-7/8	1.79	40 _{k6}	A12x8x70	43
C502/C503	1.625	3/8 x 3/8 x 2-7/8	1.79	40 _{k6}	A12x8x70	43
C612/C613	2.125	1/2 x 1/2 x 3-5/32	2.35	50 _{k6}	A14x9x90	53.5
C712/C713	2.375	5/8 x 5/8 x 3-15/16	2.65	60 _{m6}	A18x11x100	64
C812/C813	2.875	3/4 x 3/4 x 4-5/16	3.21	70 _{m6}	A20x12x125	74.5
C912/C913	3.625	7/8 x 7/8 x 5-1/2	4.01	90 _{m6}	A25x14x140	95

Table 3 Motor Adapter Dimensions (mm)

Motor Adapter	Motor Shaft D ⁶ Max. ²⁾	Thickness L ⁹ Min. ³⁾	E	E ²	X	Wt. lbs.
MT10	19	21	140	70	40	5
MT20	24	24	160	80	50	8
MT30	38	25	200	100	60	12
MT40	48	33	250	125	89	18
MT50	60	43	300	150	81.5	16

²⁾ If an adapter bushing is required it will be supplied as a component of the motor mounting plate.

³⁾ Motor plate maximum thickness (L⁹) will vary with motor shaft length but will not be less than shown.

Table 4 Dimensions (mm)

Unit	MT10		MT20		MT30		MT40		MT50		Approx. Wt.(lbs.)
	C	L	C	L	C	L	C	L	C	L	
C002	194	154	208	158	—	—	—	—	—	—	18
C102	227	187	241	191	253	193	—	—	—	—	29
C103	264	224	—	—	—	—	—	—	—	—	34
C202	255	215	269	219	281	221	—	—	—	—	38
C203 ¹⁾	292	252	312	262	—	—	—	—	—	—	45
C302	—	—	288	238	300	240	332	243	—	—	49
C303 ¹⁾	311	271	331	281	—	—	—	—	—	—	56
C402	—	—	335.5	285.5	347.5	287.5	379.5	290.5	—	—	71
C403	—	—	378.5	328.5	—	—	—	—	—	—	78
C502	—	—	357	307	369	309	401	312	407.5	326	95
C503	—	—	400	350	—	—	—	—	—	—	111
C612 ¹⁾	—	—	—	—	393	333	425	336	430.5	349	115
C613 ¹⁾	—	—	425	375	455	395	—	—	—	—	159
C712	—	—	—	—	446	386	477	388	482.5	401	199
C713 ¹⁾	—	—	—	—	507	447	548	459	—	—	221
C812	—	—	—	—	—	—	544	455	549.5	468	322
C813	—	—	—	—	574	514	615	526	—	—	342
C912	—	—	—	—	—	—	—	—	616.5	535	596
C913	—	—	—	—	—	—	682	593	—	—	678

¹⁾ See Table 5

* h6, k6, m6 = existing values

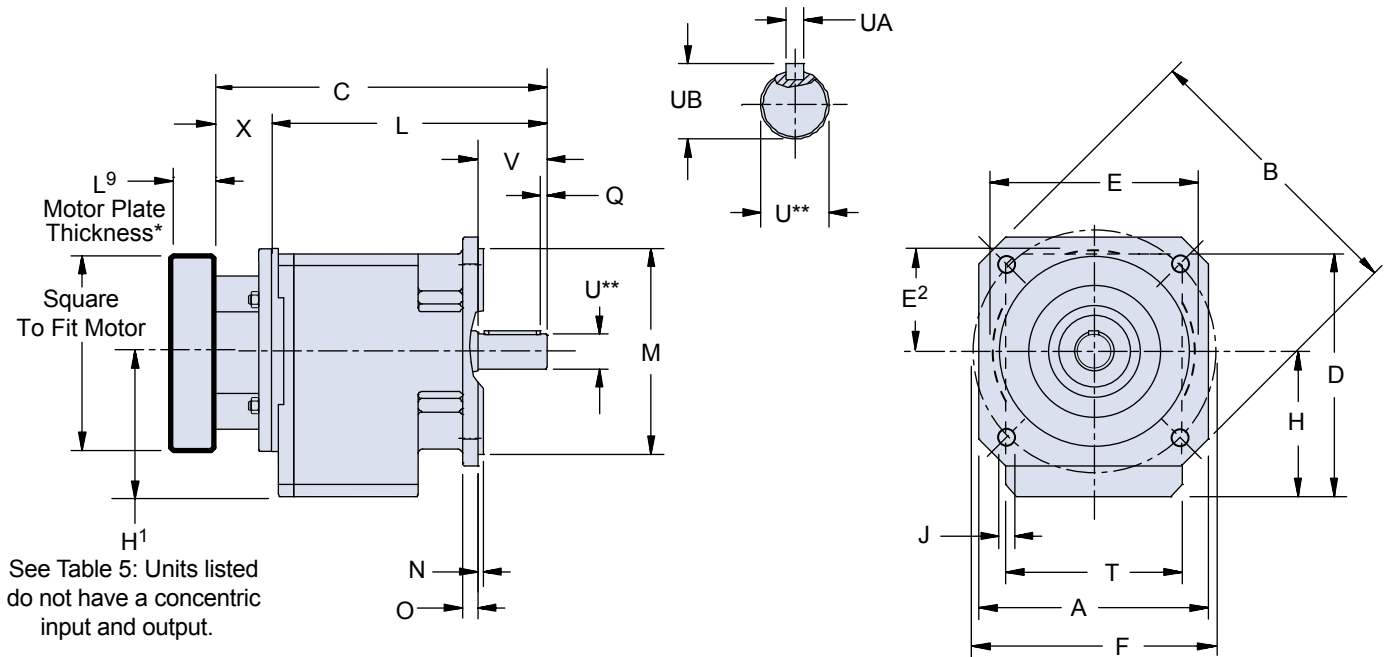
For approximate weight, add adapter weight from Table 3 and base module weight from Table 4.

Table 5 Input Dimensions (mm)

Unit	H ¹			
	MT20	MT30	MT40	MT50
C203	78.5	—	—	—
C303	93	—	—	—
C612	—	193	193	193
C613	—	—	193	—
C713	—	—	254	—

“Q” Square Output Flange —

C002Q thru C403Q Only



* See Motor Mounting Plate Option, page 66 for details.
 ** For optional output shaft options, see page 65.

Contact STOBER for availability.



Dimensional Data

C

INLINE – Solid Shaft Output

Table 1 Dimensions (mm)

Unit	A	B	D	F	H	J	M _{j6} *	N	O	Q	T	V
C002	124	160	141	130	79	9	110	3	9	3	97	40
C102/C103	145	192	175	165	100	11	130	3.5	11	5	130	50
C202/C203	145	192	192	165	112 ¹⁾	11	130	3.5	11	5	142	60
C302/C303	200	250	212	215	127 ¹⁾	14	180	4	14	5	154	60
C402/C403	200	250	242.5	215	142.5	14	180	4	14	5	178	80

¹⁾ See Table 5

Table 2 Metric output available on request.

Unit	Standard Shaft - inches			Optional Shaft - mm		
	U _{h6} *	UA	UB	U _{k6} *	UA	UB
C002	0.750	3/16 x 3/16 x 1-7/32	0.83	20	A6x6x32	22.5
C102/C103	1.000	1/4 x 1/4 x 1-9/16	1.11	25	A8x7x40	28
C202/C203	1.250	1/4 x 1/4 x 1-15/16	1.36	30	A8x7X50	33
C302/C303	1.250	1/4 x 1/4 x 1-15/16	1.36	30	A8x7X50	33
C402/C403	1.625	3/8 x 3/8 x 2-7/8	1.79	40	A12x8X70	43

Table 3 Motor Adapter Dimensions (mm)

Motor Adapter	Motor Shaft D ⁶ Max. ²⁾	Thickness L ⁹ Min. ³⁾	E	E ²	X	Wt. (lbs.)
MT10	19	21	140	70	40	5
MT20	24	24	160	80	50	8
MT30	38	25	200	100	60	12
MT40	48	33	250	125	89	18

* h6, j6, k6 = existing values

For approximate weight, add adapter weight from Table 3 and base module weight from Table 4.

²⁾ If an adapter bushing is required it will be supplied as a component of the motor mounting plate.

³⁾ Motor plate maximum thickness (L⁹) will vary with motor shaft length but will not be less than shown.

Table 4 Dimensions (mm)

Unit	MT10		MT20		MT30		MT40		Approx. Wt. (lbs.)
	C	L	C	L	C	L	C	L	
C002	194	154	208	158	—	—	—	—	18
C102	227	187	241	191	253	193	—	—	29
C103	264	224	—	—	—	—	—	—	34
C202	255	215	269	269	281	221	—	—	38
C203 ¹⁾	292	252	312	262	—	—	—	—	45
C302	—	—	288	238	300	240	332	243	49
C303 ¹⁾	311	271	331	281	—	—	—	—	56
C402	—	—	335.5	285.5	347.5	287.5	379.5	290.5	71
C403	—	—	378.5	328.5	—	—	—	—	78

¹⁾ See Table 5

Table 5 Input Dimensions (mm)

Unit	H ¹ MT20
C203	75.5
C303	90