

Valvole rotative DC_ - Rotary valves DC_

A passaggio verticale 0,1bar - Drop-thru 0,1bar

- Costruzione robusta
Heavy duty construction
- Entrata ed uscita di grandi dimensioni
Large inlet and outlet
- Cuscinetti esterni e tenute con premibaderna
Outboard bearings and packing gland type seals
- Versioni per alte temperature fino a 350°C
High temperature versions up to 350°C
- Versioni certificate ATEX 2014/34/EU
Versions in accordance with ATEX 2014/34/EU



Applicazione <i>Application</i>	Scaricatori a tenuta per filtri depolveratori e cicloni. Progettate per una vasta gamma di materiali, di applicazioni e di condizioni operative, sono usate anche come scaricatori e dosatori sotto sili e tramogge.	<i>Discharge airlock valves for dust collector filters and cyclones. Designed for a wide range of products, systems and operating conditions, they are also used as discharger and metering valves below silos and hoppers.</i>
Dimensioni <i>Size</i>	6, 8, 10, 12, 14, 16, 20, 24 da 3,5 a 250 Litri/giro	6, 8, 10, 12, 14, 16, 20, 24 3,5 to 250 Litres/rev.
Pressione <i>Pressure range</i>	Fino a 0,1bar di pressione differenziale	<i>Up to 0,1bar differential pressure</i>
Temperatura <i>Temperature</i>	Fino a 150°C (Versioni standard) Versioni per alte temperature fino a 350°C	<i>Up to 150°C (Standard versions) High temperature versions up to 350°C</i>
Materiali di costruzione <i>Construction materials</i>	<ul style="list-style-type: none"> ▪ Corpo e coperchi Fusione di ghisa ▪ Rotore Acciaio al carbonio, acciaio inossidabile ▪ Estremità delle pale Acciaio antiusura, acciaio inossidabile, Vulkollan ▪ Trattamenti superficiali interni Nichelatura chimica, cromatura dura, carburo di tungsteno, teflonatura 	<ul style="list-style-type: none"> ▪ <i>Body and end covers</i> <i>Cast iron</i> ▪ <i>Rotor</i> <i>Carbon steel, stainless steel</i> ▪ <i>Replaceable blade tips</i> <i>Hardened steel, stainless steel, Vulkollan</i> ▪ <i>Internal surface treatments</i> <i>Nickel-plating, hard chrome-plating, tungsten carbide, teflon</i>

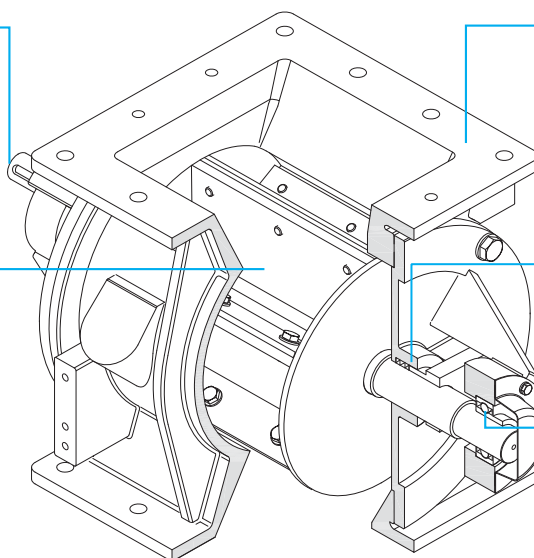
Valvole rotative DC_ - Rotary valves DC_

Caratteristiche - Design features

Trasmissione diretta o a catena
Direct drive or chain drive

Rotore chiuso con 6/8 pale saldate,
estremità delle pale sostituibili
Fabricated 6/8 vanes closed end rotor,
replaceable blade tips

Facile manutenzione
grazie alla semplicità costruttiva.
Coperchi, rotore e trasmissione possono essere
facilmente smontati per ispezioni o pulizia
Easy maintenance due to simple construction.
End covers, rotor and drive can be easy dismantled
for inspection or cleaning



Robusto corpo in fusione
con entrata ed uscita quadrate
di grandi dimensioni
Rugged cast body
with large square inlet and outlet

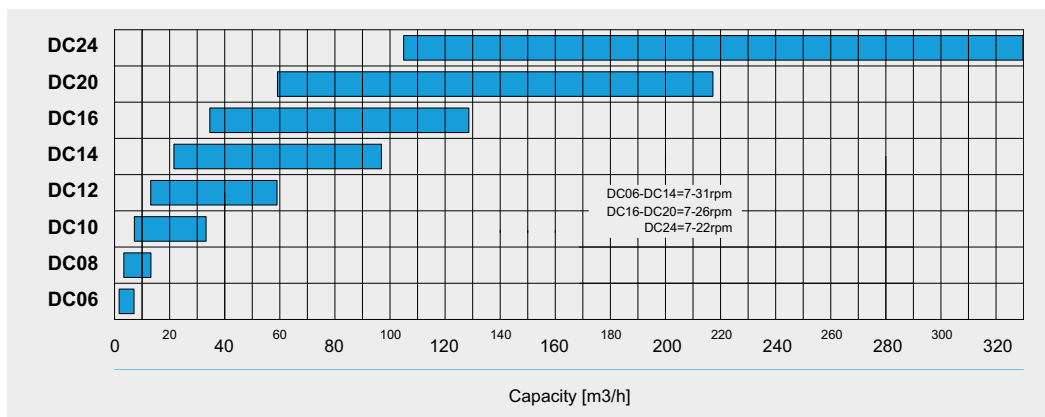
Tenuta con prebaderna
Packing gland type seals

Cuscinetti montati esternamente,
separati dal prodotto tramite lo spazio
esterno tra tenuta e cuscinetto
Outboard mounted ball bearings,
separated from product by outlet space
between shaft seal and bearing

Dati tecnici - Technical data

Diagramma delle portate
Capacity diagram

Riempimento al 100%
Filling Efficiency 100%

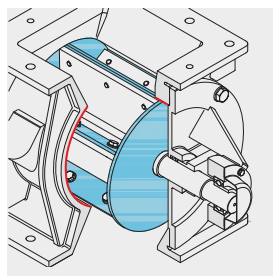


Versioni - Versions

Versioni
Versions



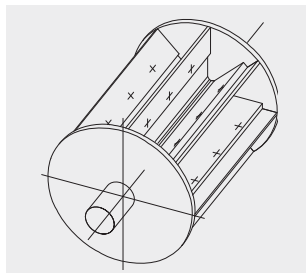
▪ **Versioni ATEX 2014/34/EU**
Gruppo II, Zona 1/21, Cat.2GD
Gruppo II, Zona 0/20, Cat.1GD
Versions ATEX 2014/34/EU
Group II, Zone 1/21, Cat.2GD
Group II, Zone 0/20, Cat.1GD



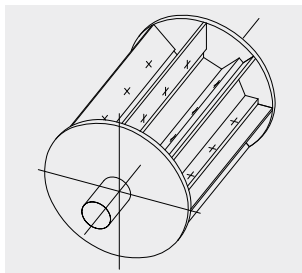
▪ **Versioni antiusura,**
differenti soluzioni e materiali
con più livelli di protezione
Wear resistance versions,
various designs and materials
with different wear protection
levels

Rotori ed accessori - Rotors and accessories

Rotori Rotors

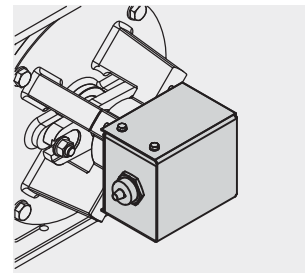


- Rotore DS (Standard)**
 Rotore chiuso con estremità delle pale sostituibili
Rotor DS (Standard)
 Closed end rotor with replaceable blade tips



- Rotore GS**
 Rotore chiuso parzialmente riempito con estremità delle pale sostituibili
Rotor GS
 Closed end partially filled rotor with replaceable blade tips

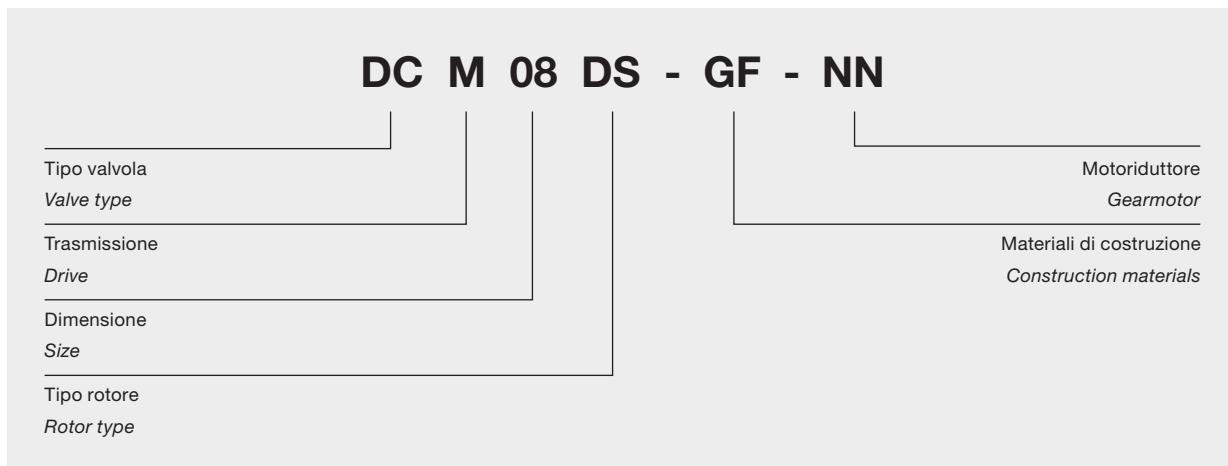
Accessori Accessories



- Controllo di rotazione**
Motion indicator

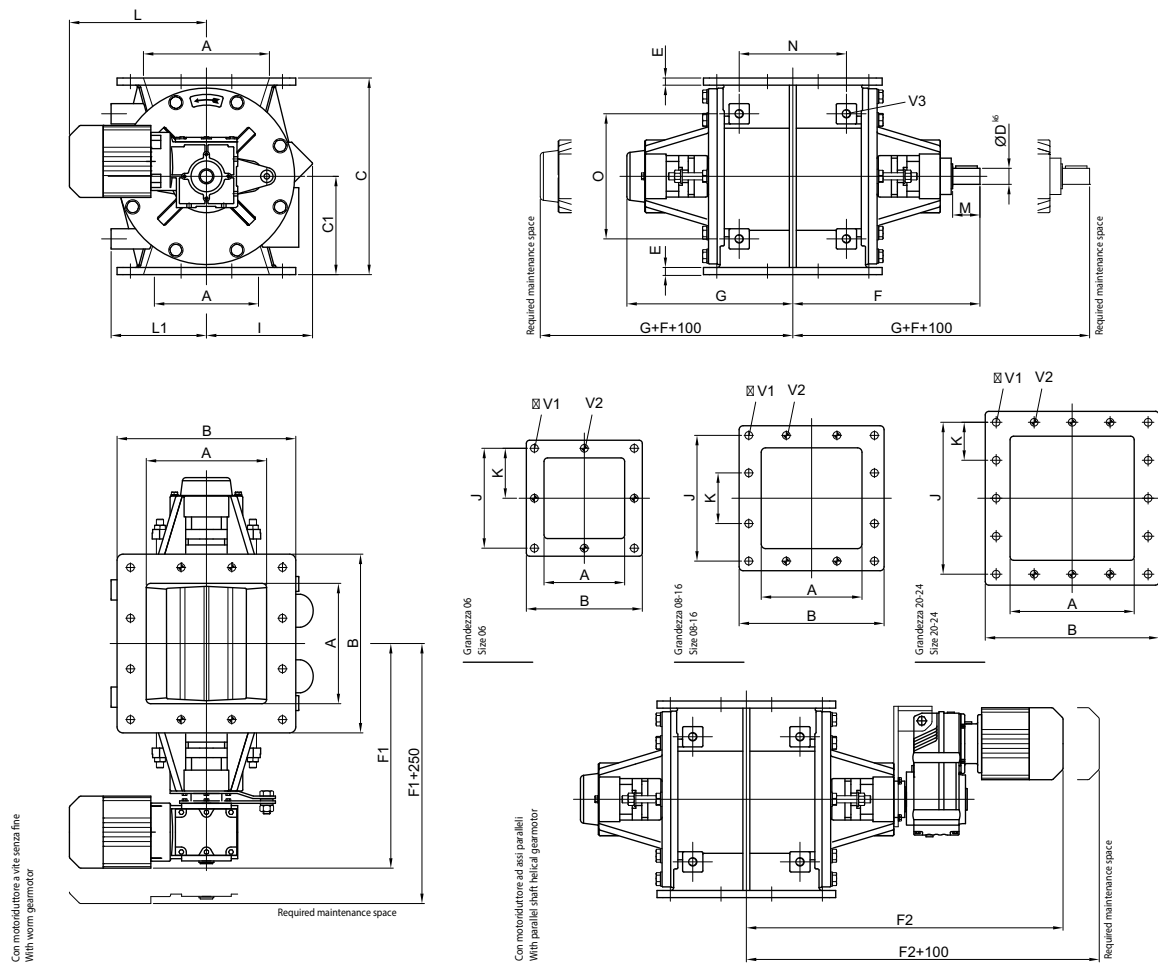
Designazione del tipo - Type designation

Esempio Example



Valvole rotative DCM_ - Rotary valves DCM_

Dimensioni - Dimensions



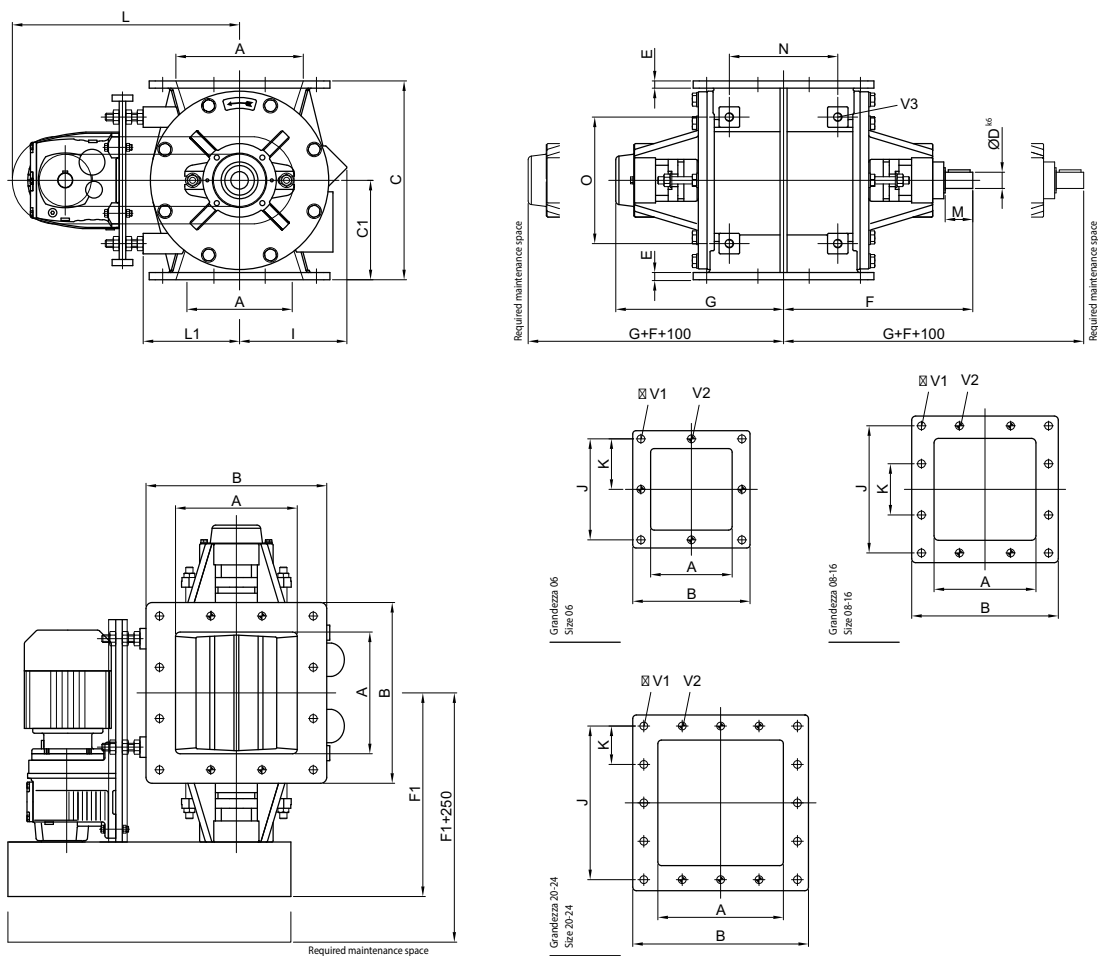
	Ltr/rev Ltr/giro	A	B	C	C1	Ø D ^{k6}	E	F	F1 ²⁾	F2 ²⁾	G	I
DCM06	3,5	150	260	260	130	25	12	272	342	500	221	135
DCM08	7	200	292	330	165	25 / 30	12	294	362	550	240	152
DCM10	18	250	350	400	200	30	16	320	402	625	266	191
DCM12	32	300	430	490	245	35	16	400	---	724	337	231
DCM14	52	350	480	560	280	40	20	441	---	785	375	290
DCM16	82	400	530	645	322,5	40	20	480	---	855	415	332
DCM20	140	500	650	740	370	50	20	633	---	1070	470	346
DCM24	250	600	750	940	470	60	25	709	---	1190	545	435

	L ²⁾	L1	M	N	O	J	K	Ø V1	V2	V3	kg ¹⁾
DCM06	314	124	60	172	162	210	105	14	M12	M12	70
DCM08	314	176	60	112	190	255	85	14	M12	M16	115
DCM10	345	194	60	261	280	306	102	14	M12	M16	160
DCM12	---	236	70	304	320	390	130	14	M12	M16	260
DCM14	---	292	70	360	340	432	144	14	M12	M20	390
DCM16	---	344	70	362	340	480	160	18	M16	M20	450
DCM20	---	356	165	403	400	600	150	18	M16	M20	660
DCM24	---	445	188	430	500	672	168	18	M16	M24	1200

1) Peso approssimativo / Weight approx.
2) Misure approssimative / Measurements approx.

Valvole rotative DCT_ - Rotary valves DCT_

Dimensioni - Dimensions



	Ltr/rev Ltr/giro	A	B	C	C1	Ø D ^{k6}	E	F	F1	G	I
DCT06	3,5	150	260	260	130	25	12	272	297	221	135
DCT08	7	200	292	330	165	25	12	294	317	240	152
DCT10	18	250	350	400	200	30	16	320	342	266	191
DCT12	32	300	430	490	245	35	16	400	409	337	231
DCT14	52	350	480	560	280	40	20	441	438	375	290
DCT16	82	400	530	645	322,5	40	20	480	478	415	332
DCT20	140	500	650	740	370	50	20	538	560	470	346
DCT24	250	600	750	940	470	60	25	609	624	545	435

	L ²⁾	L1	M	N	O	J	K	Ø V1	V2	V3	kg ¹⁾
DCT06	375	124	60	172	162	210	105	14	M12	M16	78
DCT08	444	176	60	180	210	255	85	14	M12	M16	120
DCT10	444	194	60	261	280	306	102	14	M12	M16	175
DCT12	522	236	70	304	320	390	130	14	M12	M16	280
DCT14	590	267	70	360	340	432	144	14	M12	M20	365
DCT16	668	310	70	362	340	480	160	18	M16	M20	465
DCT20	758	356	70	403	400	600	150	18	M16	M20	680
DCT24	897	445	80	430	500	672	168	18	M16	M24	1220

1) Peso approssimativo / Weight approx.
 2) Misure approssimative / Measurements approx.



Altri prodotti YOUNG-MASSA - Other YOUNG-MASSA products



LDC_
Valvole rotative – 0,1 bar
Rotary valves – 0,1 bar



LDT_
Valvole rotative – 1 bar
Rotary valves – 1 bar



DT_
Valvole rotative – 1 bar
Rotary valves – 1 bar



LDR_
Valvole rotative DIN PN10 – 1 bar
Rotary valves DIN PN10 – 1 bar



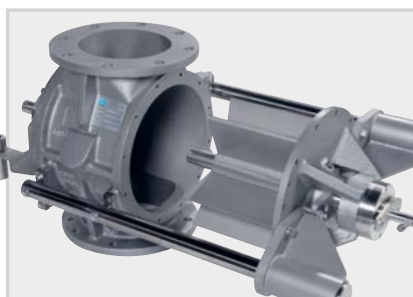
BT_
Valvole rotative a flusso attraversato – 1 bar
Blow-thru rotary valves – 1 bar



SE_
Valvole rotative per granuli – 1 bar
Rotary valves for pellets – 1 bar



Versioni a smontaggio rapido
Fast opening versions



Versioni con guide di estrazione
Versions with supporting bars



VP_, VPH_
Valvole a ghigliottina
Slides Valves



SA_
Valvole a doppio clapet
Double flap gate valves



TC_
Trasportatori a coclea
Screw conveyors

OVER
40
Years of service



2014/34/EU

YM
YOUNG-MASSA

YOUNG-MASSA Srl

Via S. Maria, 5
20873 Cavenago Brianza (MB) - Italia

Tel: +39 0295019613

Fax: +39 0295019413

info@youngmassa.it

www.youngmassa.it